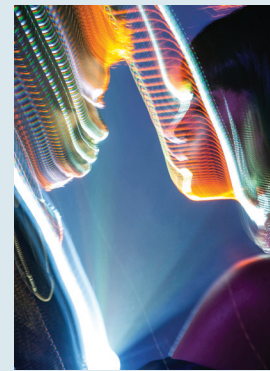
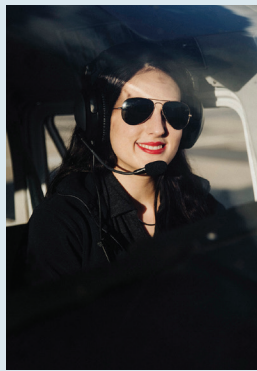
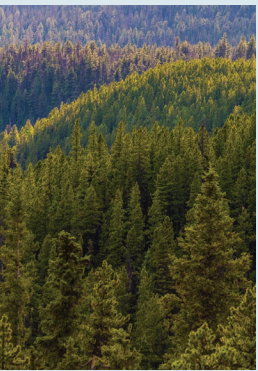




Idaho Jobs Explained

Explore your future. Right here in Idaho.



A career exploration series from Idaho Public Television
introducing young Idahoans to real jobs, real workplaces, and real pathways
into Idaho's in-demand industries.





MEET THE HOST OF IDAHO JOBS EXPLAINED

ABOUT THE SERIES

Idaho Jobs Explained is a career exploration series that helps young Idahoans better understand the career possibilities available across the state. Each episode takes viewers inside an Idaho workplace to learn about in-demand industries, hear directly from employees, and see the many pathways that can lead to meaningful careers.

Idaho Jobs Explained is designed for students and young adults who are beginning to think seriously about life after high school. It is especially useful for those comparing different pathways, including college, technical training, apprenticeships, military service, or entering the workforce directly.

The project also supports the adults and organizations helping students make those decisions. Educators, career counselors, families, employers, and workforce partners can use Idaho Jobs Explained as a resource to start conversations, introduce career pathways, and show students what opportunity looks like in Idaho.

Episodes are built around real workplace experiences. Host Matthew Baltzell visits job sites, works alongside employees when possible, and talks with people at different stages of their careers. These conversations show what a job involves, how someone gets started, what training may be required, and what makes the work meaningful.

Host and producer **MATTHEW BALTZELL** explores careers in aviation.

"My goal is to make career exploration feel approachable, curious, and human, with some laughter and fun along the way. I want to help young Idahoans see that they do not have to leave their home state to find a future worth getting excited about."

MATTHEW BALTZELL



MARIA KINNE, forester at Idaho Department of Lands (left) and **JOHN BLAKLEY**, co-owner of McCall Aviation (right)



IdahoPTV's **BENJAMIN WEAVER** (left) and **MATTHEW BALTZELL** (center) with **SHAUN BUCHANIEC**, director senior, Consolidated Service Center (right)

GET INVOLVED

Idaho Jobs Explained works with businesses, organizations, and industry leaders who want to help young people better understand career opportunities in Idaho. By opening the door to your workplace, you can help students see what jobs in your industry actually look like, what skills are needed, and which pathways can lead to long-term careers.

BE AN IDAHOPTV PARTNER Every Idaho Jobs Explained episode is developed in collaboration with our industry partners. To help us tell the strongest story possible, we ask partners to help identify employees, locations, and workplace activities that can give students a clear and engaging look at the industry.



JASON PEPPL, facilities technician at St. Luke's

Participating in Idaho Jobs Explained gives partners an opportunity to highlight real employees, showcase meaningful work, and support the next generation of Idaho's workforce.

Our team will work with partners to shape a filming plan that respects workplace needs.



EREN BARKER,
Well-being program
manager at St. Luke's

PARTICIPATION IS FUN AND EASY! HERE'S WHAT IDAHOPTV WILL NEED FROM YOU:

A main point of contact for scheduling and coordination.

Help identifying employees who can speak naturally about their work and career path.

Access to workplace locations where filming is safe, practical, and visually engaging.

Information about safety requirements, privacy concerns, or filming restrictions.

Time for short pre-interviews with potential participants before the filming day.

MATH AT WORK: A COMPANION VIDEO SERIES

As part of *Idaho Jobs Explained*, IdahoPTV is also producing *Math at Work*. This companion series is for educators to help high school students connect classroom math to real-world careers in Idaho.

Each Math at Work video focuses on how math is used in a specific industry, showing students that concepts they learn in school have practical applications beyond the classroom. These videos are designed to support educators by making math feel more relevant, career-connected, and grounded in Idaho workplaces.

IdahoPTV works with education partners, teachers, and subject matter experts to develop videos and classroom materials that align with high school math concepts and support deeper learning. The goal is to help students see math not just as something they study, but as a tool people use every day to solve problems, make decisions, and do meaningful work.



My job entails measuring, taking very precise measurements. We'll make maps for the miners to let them know where they are going.

KAREN RYAN, survey technician

MATH AT WORK

For questions about Idaho Jobs Explained, partnership opportunities, or filming logistics, please contact:

MATTHEW BALTZELL
Producer & Host
Idaho Jobs Explained
matthew.baltzell@idahoptv.org
(208) 999-1604

IDAHO PUBLIC TELEVISION
1455 N Orchard St.
Boise, ID 83706
idahoptv.org
(208) 373-7220

WATCH IDAHO JOBS EXPLAINED ONLINE AND ON BROADCAST

@idahojobs_explained  

