



MT Jonnie

MONDAY, 5/11 AT 8PM

THURSDAY, 5/14 AT 7PM

→ P. 2

Montana PBS

MAY 2026



National Memorial Day Concert 2026

SUNDAY, 5/24 AT 7PM & 8:30PM

→ P. 3

Montana PBS Guide

MAY 2026 · VOL. 39 · NO. 11

COPYRIGHT © 2026 MONTANA PBS, ALL RIGHTS RESERVED

MAIN OFFICE 406-994-3437
TOLL-FREE 866-832-0829
membership@montanapbs.org
www.montanapbs.org

DOWNLOAD THE PBS APP
www.pbs.org/pbs-app

PBS  **Passport**

STREAM PROGRAMS ONLINE
<https://watch.montanapbs.org>

FRIENDS OF MONTANA PBS
P.O. Box 173340
Bozeman, MT 59717-3340

SEND CHANGE OF ADDRESS TO:
Montana PBS Membership
membership@montanapbs.org

The Guide to Montana PBS is printed monthly by the Bozeman Daily Chronicle for Montana PBS and the Friends of Montana PBS, Inc., a nonprofit corporation 501(c)(3). The publication is sent to contributors to Montana PBS. Nonprofit periodical postage paid at Bozeman, MT



PHOTOS BY DAN HUBBELL

Cover: 1990 - Jonnie Jonckowski prepares for a bull riding event during a rodeo competition. This Page: Jonckowski rides a bull moments before shattering her arm at a 1988 rodeo competition in Casper, Wyoming.

Premiere! Another Great Montana Story

MT Jonnie

MONDAY, 5/11 AT 8PM; THURSDAY, 5/14 AT 7PM

Also HD 5/15 12:30pm, 5/16 4pm, 5/17 9:30am WORLD 5/21 noon; 5/28 5pm

Jonnie Jonckowski is a Montana legend. She grew up with a passion for horses, natural athleticism and a relentless competitive drive. In her early twenties -- just when her dream of becoming an Olympic pentathlete was within reach -- she was permanently sidelined by a back injury. In search of a new challenge, Jonnie set her sights on an unlikely pursuit: professional bull riding. Jonnie's intrepid pursuit of a world title in the 1980s defied gender stereotypes and resulted in life-threatening injuries. It also ushered in a turbulent personal journey marked by poverty, heartbreak, and assault. And now, four decades later, Jonnie still rises to meet strenuous challenges: rescuing abandoned horses, battling natural disasters, and fiercely devoting herself to helping a community in need.

New Episode of Montana's Favorite Local Show



MT Backroads of Montana

Colors & Characters

MONDAY, 5/18 AT 8PM Also 5/21 7pm, 5/23 5pm, 5/24 10:30am

See an impressive agate collection in eastern Montana, hand-carved carousel ponies in Missoula, a colorful herd of elk in Valier, and a long-gone roadside attraction in Roundup. Hosted in Red Lodge.

PHOTO BY AJ WILLIAMS/MONTANA PBS

Carousel for Missoula's woodcarvers work on a pony during an outdoor event.



A SERVICE OF



CREDIT: COURTESY OF CAPITAL CONCERTS

Cover: Signature graphic for the NATIONAL MEMORIAL DAY CONCERT 2026.



Remember America's Armed Service Members

National Memorial Day Concert 2026

SUNDAY, 5/24 AT 7PM & 8:30PM Also 5/29 12:30pm

The 37th annual broadcast of America's national night of remembrance. Joe Mantegna and Gary Sinise once again host the National Memorial Day Concert from the West Lawn of the U.S. Capitol, bringing us together as one family of Americans to honor the service of all those men and women who have given their lives in service to our nation since its founding 250 years ago. The 2026 concert features personal stories and tributes interwoven with musical performances by world-renowned artists and the National Symphony Orchestra to commemorate the real meaning of the holiday.

An audience member stands for the national anthem

CREDIT: COURTESY OF CAPITAL CONCERTS



Marlon Haughton & Aaron Bishop with Bigfork Rodeo Fan

CREDIT: USS MONTANA COMMITTEE.

A Navy Story from Montana

MT Montana, Montana, Glory of the Seas

SUNDAY, 5/24 AT 6PM Also 5/31 10am

Explore the irony of landlocked Montana's unique relationship with the U.S. Navy for more than a century because of two very different USS MONTANA warships -- one old and one new -- both leading-edge for their time, and the sailors who warmed hearts across Big Sky Country. It's a historical tale of respect and support.



Jim Markel Sr. and Jim Markel Jr. at Khe Sanh War Memorial Site, Vietnam, 2018

CREDIT: BEARTOOTH FILMS LLC

Encore of a Great Montana Veterans' Story

MT RETURN

THURSDAY, 5/7 AT 7PM Also 5/10 9:30am

RETURN is the story of adventure, vulnerability, and healing that follows Jim Markel Sr., a retired Green Beret who voyages from Montana to Vietnam for the first time since the war. In retracing his steps with his adult son, he reflects on his past actions as both soldier and parent. Together, father and son embark on a deep search: for long-overdue family healing, for the roots of PTSD, and for the mountain tribes Markel once lived with, fought alongside, and eventually abandoned 45 years ago.

Montana PBS



Backroads of Montana

Not Forgotten

A DeBorgia man's film legacy. A tasty artifact from Montana's military past in Miles City. A Toston woman's songs about cow's thoughts. And the things that inspire a Crow Indian artist near Pryor.

Airs HD: 5/2 5pm

Making Connections

The vanishing cowboy life in paint & poems, the Lineman's Rodeo in Butte, the Tizer Gardens and Arboretum in Jefferson City, and a vibrant 84-year-old woman who still teaches dance in Kalispell.

Airs HD: 5/9 5pm



Colors & Characters

See an impressive agate collection in eastern Montana, hand-carved carousel ponies in Missoula, a colorful herd of elk in Valier, and a long-gone roadside attraction in Roundup. Hosted in Red Lodge.

Airs HD: 5/18 8pm, 5/21 7:30pm, 5/23 5pm, 5/24 10:30am, 5/25 2:30am

→ SEE P. 2

Horsepower & Heat

From drag racing in Lewistown to barbecue in Absarokee, the competition heats up. Visit a historic battlefield and see how skijoring led a horseman to a second chance at life.

Airs HD: 5/18 8:30pm, 5/27 5:30am

Marking Passages

Closing of dinosaur-digging season near Bynum, a centenarian bugler pays respect, a quest to raise big pumpkins in Polson, saving a special rock quarry near Geraldine, and the Hunter's Feed in Ennis.

Airs HD: 5/18 8:30pm, 5/27 5:30am



11th & Grant

Elana Hayden & The Sugar Daddies

Elana Hayden, a New York vocalist now making Montana her home, brings sultry warmth and powerful intensity to *11th & Grant with Eric Funk*. Known for her captivating stage presence, she delivers timeless jazz filled with elegance, soul, and heartfelt emotion.

Airs HD 5/2 10pm, 5/4 2am

Bebe LeBoeuf

America is a melting pot where worlds come together. Immigrants to the U.S. brought with them music from their homeland. Our region's Zydeco/Cajun band, Bebe LeBoeuf, adds their Montana flavor to the classic New Orleans Zydeco sound, while preserving the Cajun heritage of this infectious genre.

Airs HD 5/9 10:23pm, 5/11 2am

Brigid & Johnny Reedy

Brigid & Johnny Reedy perform a timeless mix of Cowboy, Western Swing, and Gypsy Jazz.

Airs HD 5/28 7pm, 5/30 9:35pm, 6/1 2am

→ SEE P. 5



Montana AG Live

Sustainable Fuels

Sustainable fuels are a growth sector in Montana, for industry, transport, & agriculture.

Airs HD 5/3 11am

Precision Agriculture

Precision ag helps reduce costs, limit chemical use, and improve management decisions.

Airs HD 5/3 6pm, 5/10 11am

Gallatin Valley Farm Fair

Fourth-graders in the Gallatin Valley get some up-close exposure to farms and ranches.

Airs HD 5/10 6pm, 5/17 11am

Montana Department of Livestock

The MT Dep't. of Livestock helps ensure our livestock industry remains one of the best.

Airs HD 5/17 6pm, 5/24 11am

Agri-Tourism Update

Tourism & the Production Agriculture business - it's a thing, and it's growing in Montana.

Airs HD 5/31 6pm, 6/7 11am



Montana PBS Reports: IMPACT

Montana PBS Reports: IMPACT: The Primary Election/Immigration Enforcement

Montana PBS Reports: IMPACT: The Primary Election/Immigration Enforcement

How the primary races are unfolding. Plus, the ripple effects of immigration enforcement.

Airs HD: 5/21 7pm, 5/22 12:30pm, 5/23 4:30pm, 5/24 10am, 5/25 2am

WORLD: 5/25 9am; 5/27 10pm; 5/29 2:30pm

→ SEE P. 5

Or Perish in the Attempt

Using the best medical knowledge of 1803, Lewis & Clark served as the physicians for the Corps of Discovery, treating a variety of injuries and diseases over the course of the journey. Sometimes the cure was more dangerous than the ailment, yet all but one of the expedition returned home.

Airs HD: 5/3 10am

RETURN

A retired Green Beret embarks on an adventure to Vietnam for the first time since the war.

Airs HD: 5/7 7pm, 5/10 9:30am, 5/20 2:30am

Jonnie

A story of grit and redemption, JONNIE chronicles a female bull rider's intrepid journey.

Airs HD: 5/11 8pm, 5/14 9pm, 5/15 12:30pm, 5/16 4pm, 5/17 9:30am, 5/18 2am

WORLD: 5/21 noon; 5/28 5pm

→ SEE P. 2

Gravel in Her Gut and Spit in Her Eye

A look back at Montana Western writer Dorothy M. Johnson's life and her place in history.

Airs HD: 5/11 9:30pm, 5/14 8:30pm

Montana, Montana, Glory of the Seas

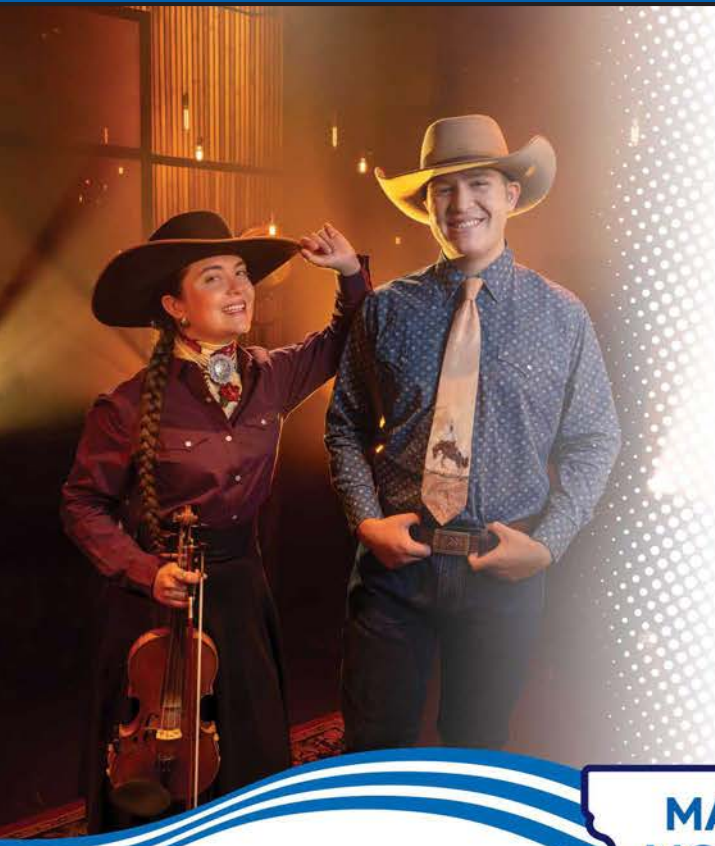
An ironic story of two USS MONTANA warships & the sailors who won the hearts of Montanans.

Airs HD: 5/24 6pm, 5/25 3am, 5/31 10am

Ivan Doig: Landscapes of a Western Mind

Ivan Doig's iconic literary work embodies the rugged life of the American West.

Airs HD: 5/27 noon



More of Montana's Great Music

11th & Grant **MT** **11th & Grant with Eric Funk**

Brigid & Johnny Reedy

THURSDAY 5/28 7PM Also HD: 5/30 9:35pm

Brigid & Johnny Reedy of Dillon, Montana, bring unmatched energy, musicianship, and sibling chemistry to 11th & Grant with Eric Funk. Brigid, a singer, fiddler, poet, and storyteller, has become a singular young voice of Montana, weaving the spirit of the contemporary rural west into every song. With boundless passion, grace, and soul, her performances embody both tradition and timeless artistry. She is joined by her brother, Johnny "Guitar" Reedy, an accomplished multi-instrumentalist whose sensitivity and musical maturity transcend his years. Together, they craft an eclectic mix of Cowboy, Western Swing, Gypsy Jazz, and Blues -- woven with heartfelt harmonies and a love of Montana that makes every performance unforgettable.

PHOTO: MSU UNIVERSITY COMMUNICATIONS
Brigid (L.) and Johnny Reedy



Montana Journalism & Investigative Reporting

MT **Montana PBS Reports: IMPACT**

The Primary Election/ Immigration Enforcement

THURSDAY 5/21 7PM Also Also 5/22 12:30pm, 5/23 4:30pm, 5/24 10am, 5/25 2am
WORLD: 5/26 9am; 5/27 10pm; 5/29 2:30pm

Primary ballots in Montana got a lot more interesting when Sen. Steve Daines and Rep. Ryan Zinke announced they would not seek reelection in the 2026 midterms. We examine how the shakeup in Republican leadership is shaping campaigns on both sides of the aisle. Plus, as immigration enforcement in the United States ratchets up, ripple effects are being felt in Montana. From the State Capital to the High-Line, communities in Montana are reckoning with the policies of ICE and Border Patrol.

PHOTO: SAM WILSON / MONTANA PBS
Voters are shown here casting their ballots in Great Falls, Montana, during the 2024 general election.





Montana PBS

LEARN AT HOME, TOO!

Once again, Montana PBS has a great lineup of programs that educate and inspire. And, we're adapting our Learn at Home service. Check this space every month for the latest Learn at Home, Too! news.

Whether it's just a few days or for an extended period, we'll have materials for educators, parents and students to help learning at home. Every month we'll select a few programs, and create digital curriculum-aligned lesson plans and bonus resources all available online. Contact our Education team to learn how to get the most out of Montana PBS Learn at Home, Too!

Nikki Vradenburg at nikki@montanapbs.org

Curriculum-Related Programming

	MON	TUES	WED	THUR	FRI	SAT	SUN
5:30am							
6:30am							
8:00am						Kids 3-8	Kids 3-8
10:00am			Kids 3-8				
10:30am							
12:00pm							
2:00pm			Kids 9+				
5:30pm			Kids 3-8				

Featured programs in May

🍎 Mollie of Denali



Kids Channel: Mon-Fri 3pm;
Sat & Sun 3pm HD Channel: Mon-Fri 8:30am

Set in a rural Alaskan village, Molly, her family, and friends, model the many ways that children can access and create informational text in their daily lives.

Learn about our Natural world. Use this Field Guide to Birds from the PBS KIDS series MOLLY OF DENALI™ to identify and learn more about birds in your neighborhood. Then seek out additional information and create your own pages to add to Molly's guide. <https://montana.pbslearningmedia.org/resource/field-guide-activity-document/a-field-guide-to-birds-molly-of-denali/>

🍎 Nature Woodpeckers: The Hole Story



HD Channel: Wed 4/29 7pm; Wed 5/6 1pm;
WORLD: Sun 5/3 6pm & 10pm; Mon 5/4 6am

An intimate look at what makes woodpeckers special and explore their unique evolutionary journey.

The fascinating world of woodpeckers. In this resource, students compare several species of woodpeckers highlighted in the episode, including their nesting methods and habitat, their feeding strategies, and the uniquely specialized traits that enable them to thrive in a wide array of ecosystems across the planet. The resource includes a student handout to guide viewing. <https://montana.pbslearningmedia.org/resource/the-wide-world-of-woodpeckers-video-gallery/nature-season-41-woodpeckers-the-hole-story/>

Montana PBS-HD & Montana PBS-WORLD Channels

Main Listing

FRIDAY

MAY 1

AM EARLY MORNING

- mdnt Overheard with Evan Smith: Ibram X. Kendi
- MDNT **WORLD** Reel South: Small Town Universe
- 12:30 NHK Newline
- 1:00 As Time Goes By: Living Together, But Where?
- 1:00 **WORLD** PBS News Hour
- 1:30 Waiting for God: Waterworks
- 2:00 The Secret World of Guide Dogs with Martin Clunes
- 2:00 **WORLD** Amanpour and Company
- 3:00 Friends & Neighbors: Stories of Hope & Healing
- 3:00 **WORLD** Whatever Dreams They Had
- 3:30 **WORLD** Stories from the Stage: Second Nature
- 4:00 Great Performances: Now Hear This
- 4:00 **WORLD** BBC News
- 4:30 **WORLD** Balancing Act with John Katko
- 5:00 Ancient Roads from Christ to Constantine: From Apocalypse to Heresies
- 5:00 **WORLD** Newsroom Tokyo
- 5:28 **WORLD** Direct Talk
- 5:43 **WORLD** NHK Short Program

PM EVENING

- 5:30 BBC News The Context USA**
- 6:00 PBS News Hour**
- 6:00 **WORLD** The American Revolution: The Times That Try Men's Souls TV-14
- 7:00 Washington Week with The Atlantic**
- 7:30 Firing Line with Margaret Hoover**
- 8:00 Great Performances** "Now Hear

This | The Iceland Sound" Journey across Iceland to uncover why this small nation produces extraordinary music. TV-G

- 8:00 **WORLD** PBS News Hour
- 9:00 Great Performances** "Now Hear This: The Composer is Yoo" Follow host Scott Yoo's journey to compose a piece of music for the first time. TV-G
- 9:00 **WORLD** Bloomberg Wall Street Week
- 10:00 BBC News**
- 10:00 **WORLD** The American Revolution: The Times That Try Men's Souls TV-14
- 10:30 Amanpour and Company**
- 11:30 Consuelo Mack WealthTrack** TV-G

SATURDAY

MAY 2

AM EARLY MORNING

- mdnt Hollywood in Utah
- MDNT **WORLD** Secrets of the Dead: Ben Franklin's Bones
- 1:00 Patience: Paper Mountain Girl, Pt 1
- 1:00 **WORLD** PBS News Hour
- 2:00 Towns in Tune: Lake City, SC, USA
- 2:00 **WORLD** Amanpour and Company
- 3:00 Washington Week with The Atlantic
- 3:00 **WORLD** Human Footprint: The Replacements
- 3:30 Market to Market
- 4:00 This Old House
- 4:00 **WORLD** The Whitney Reynolds Show
- 4:30 Ask This Old House
- 4:30 **WORLD** Consuelo Mack WealthTrack
- 5:00 Wai Lana Yoga: Energy Charge

- Breathing
- 5:00 **WORLD** To the Contrary with Bonnie Erbe
- 5:30 Daniel Tiger's Neighborhood
- 5:30 **WORLD** Washington Week with The Atlantic

PM EVENING

- 6:00 The Lawrence Welk Show** "America at Play" When "Ain't We Got Fun" opens the show, you know you're in for a fun time! TV-G
- 6:00 **WORLD** The American Revolution: Conquer by a Drawn Game TV-14
- 7:00 As Time Goes By** "Covering Up" Jean & Lionel are stale-mated over who will live with whom. She covers it up to her sister-in-law. TV-PG
- 7:30 Waiting for God** "The Conference" Bad news for Tom as his doctors alerts him to impending problems with his prostate. Diana senses that Tom's doctor is not telling him everything there is to tell. TV-PG
- 8:00 **WORLD** A French Village The Rope
- 8:03 Montana PBS Film Classics** "National Velvet (1944)" An equine-loving 12-year-old who trains a rambunctious horse for England's Grand National race. TV-G → STORY, P. 11
- 9:00 **WORLD** Come Back Anytime TV-G
- 10:00 **WORLD** The American Revolution: Conquer by a Drawn Game TV-14
- 10:07 MT 11th & Grant with Eric Funk** "Elana Hayden & The Sugar

THANK YOU TO OUR ONGOING PROGRAM SPONSORS



Backroads of Montana

The Greater Montana Foundation
Big Sky Film Grant
The Trail Head

Montana AG Live

Cashman Nursery & Landscaping
Montana State University Extension
Montana State University College of Agriculture/Ag Experiment Stations
Montana Wheat and Barley Committee
Montana Department of Agriculture
Gallatin Gardeners Club
Montana Federation of Garden Clubs



11th & Grant with Eric Funk

Greater Montana Foundation
Montana State University
Office of the President
Quinn's Hot Springs Resort
Donna Spitzer-Ostrovsky
in Memory of Jack Ostrovsky
Gomez and Mary Routhier
Iris Model
Sanbell
Betty Clauson,
honoring Bob & Suzy Sterling
Regina M Wunsch & Walter G Wunsch
Music Villa
Gibson Guitar
The Utzinger Family
Bill & Jane Gum
Rob Maher & Lynn Peterson-Maher
Nancy Thompson Flikkema
Robert and Barbara Tucker
Jeff and Kelly Sipes
Steve and Peggy O'Neil
Robert and Kathleen Morrison
Larry and Linda Hughes
Stockman Bank

Alice Meister & George Baskin
Gary and Sue Andrews
Mark and Lori Rosolowsky and Open Sky Artists
Greg & Cyndi Olson
Ed Lewis
Michael and Sharon Beehler
Jack and Linda Hyyppa
Judy Cowdrey
Daniel and Kathleen Wetstein
Ellen and Terry Alborn
Bob and Marjorie Hickman
Thomas and Elizabeth Schmitt
Peg Wherry
Mary and Alan Brutger
Dr. Bill and Patty Fraser
Diane Kersten
Gregory Young and Elizabeth Croy
Anne and Dennis Wentz
Phil Schneider
Jack Dostal
Mark Ramseth
Gwen and Kelly Gorham
Ron Partington



CREDIT: CARNIVAL FILM & TELEVISION LIMITED FOR MASTERPIECE
Maggie Smith as the Dowager Countess.

Fan Favorite Returns This Summer

Downton Abbey Season 1 on Masterpiece

SUNDAYS AT 9PM

(except for Part 2, airing at 10pm, after the Memorial Day Concert)

REPEATS TUESDAY AT 3AM

Depicting the lives of the noble Crawley family and the staff who serve them, set at their Edwardian country house in 1912.

Part 1

SUNDAY, 5/17 9PM Also 5/19 3am

Lord Grantham loses his immediate heirs and his daughter Mary loses her fiancé.

Part 2

SUNDAY, 5/24 10PM Also 5/26 3am

Mary entertains three suitors, including a Turkish diplomat whose boldness leads to a surprising event.

Part 3

SUNDAY, 5/31 9PM Also 6/2 3am

Growing into his role as heir, Matthew brings out the bitter rivalry between sisters Mary and Edith.

Part 4

SUNDAY, 6/7 9PM Also 6/9 3am

The heir crisis at Downton Abbey takes an unexpected turn.

Daddies" Elana Hayden & the Sugar Daddies bring sultry, powerful jazz standards to 11th & Grant. TV-G

11:04 Austin City Limits "Pat Benatar & Neil Giraldo" Legendary rockers Pat Benatar & Neil Giraldo perform classic gems in their Austin City Limits debut. TV-PG

SUNDAY

MAY 3

AM EARLY MORNING

- MDNT **WORLD** Wilding
- 12:02 Murder in the Mountains: Blood Ties
- 12:55 Midsomer Murders: Ghosts of Christmas Past
- 1:30 **WORLD** Stories from the Stage: Second Nature
- 2:00 **WORLD** POV: Black Snow
- 2:30 On Story: On Wicked: A Conversation with Winnie Holzman & Dana Fox
- 3:00 Iconic America: Our Symbols and Stories with David Rubenstein: Fenway Park
- 3:30 **WORLD** POV Shorts: Chasing Time
- 4:00 Finding Your Roots: Hidden in the Genes
- 4:00 **WORLD** On Story: Script to Screen: The Nice Guys
- 4:30 **WORLD** To the Contrary with Bonnie Erbe
- 5:00 Albie's Elevator
- 5:00 **WORLD** Washington Week with The Atlantic
- 5:30 Ready Jet Go!
- 5:30 **WORLD** The Open Mind

PM AFTERNOON/EVENING

- 3:00 **WORLD** POV: Black Snow TV-14-VL
- 3:05 Rob Reiner: The Director** TV-PG
→ STORY, P. 13
- 4:00 America the Bountiful** "Walleye in Ohio" Come to Capri's home state of Ohio to discover the bounty of Lake Erie's favorite freshwater fish. TV-G
- 4:30 A Chef's Life** "More Than One Way to Skin a Catfish" A personal experience with farm-raised catfish offers Vivian a new perspective on the industry. TV-G
- 4:30 **WORLD** POV Shorts: Chasing Time TV-PG
- 5:00 Outside: Beyond the Lens** "East Side Colors" Aspen groves explode in color on the eastern side of California's Sierra Nevada Mountains. TV-G
- 5:00 **WORLD** A French Village: The Rope
- 5:30 Compass Points from PBS News**
- 6:00 MT Montana AG Live** "Precision Agriculture: Update" Precision ag helps reduce costs, limit chemical use, and improve management decisions. TV-G
→ STORY, P. 14
- 6:00 **WORLD** Nature: Woodpeckers: The Hole Story TV-G
- 7:00 Call the Midwife** "Season 15, Ep 7" Despite the impending closure notice, a new cohort of junior doctors joins the midwives. TV-14

7:00 **WORLD** Finding Your Roots: Hidden in the Genes TV-PG

8:00 Maryland on Masterpiece "Ep 1" Sisters Becca and Rosaline receive unimaginable news about their mother. TV-14

8:00 **WORLD** Invisible Nation TV-PG

9:00 The Count of Monte Cristo on Masterpiece "The Duel" As Edmond's revenge unfolds, Albert challenges him to a duel amid high stakes. TV-14-V

9:00 **WORLD** Asian Americans: Breaking Ground TV-14

10:00 Chaplains "Pt 1" CHAPLAINS explores the dynamic world of men and women who work on the front lines of faith - representing their own particular faith or religious tradition, but are trained to be of comfort and support to everyone - religious or not. It is a profession dating back to the fourth century yet is as contemporary as any today. Ep # 1 profiles Chaplain Paul Hurley, a Catholic priest and Senior Chaplain in Afghanistan, Tyson Foods, the poultry company with more than 100 chaplains on staff, and a Buddhist woman chaplain working in a men's maximum-security prison. TV-PG

10:00 **WORLD** Nature: Woodpeckers: The Hole Story TV-G

11:00 Ancient Roads from Christ to Constantine "Pagans and the Cult of Martyrs" Jonathan Phillips treks to North Africa to tell the story of Perpetua, a young Christian martyr. TV-PG

11:00 **WORLD** Finding Your Roots: Hidden in the Genes TV-PG

MONDAY MAY 4

AM EARLY MORNING

mdnt RFDS: Royal Flying Doctor Service

MDNT **WORLD** Invisible Nation

1:00 Austin City Limits: Pat Benatar & Neil Giraldo

1:00 **WORLD** Asian Americans: Breaking Ground

2:00 **MT** 11th & Grant with Eric Funk: Elana Hayden & The Sugar Daddies

2:00 **WORLD** Reel South: Small Town Universe

3:00 Songs to Keep: Treasures of an Adirondack Folk Collector

3:00 **WORLD** American Muslims: A History Revealed: A Portrait of Freedom

3:30 **WORLD** American Muslims: A History Revealed: Islam at the Nation's Founding

4:00 Dogs in the Wild, A Nature Miniseries: Meet the Family

4:00 **WORLD** BBC News

4:30 **WORLD** The Whitney Reynolds Show

5:00 Classical Tahoe

5:00 **WORLD** Newsroom Tokyo

5:28 **WORLD** Direct Talk

5:43 **WORLD** NHK Short Program

PM EVENING

5:30 BBC News The Context USA

6:00 PBS News Hour

6:30 **WORLD** Who She Is TV-PG

7:00 Antiques Roadshow "Grants Farm, Hr 2" ANTIQUES ROADSHOW harvests hidden treasures at historic Grant's Farm in St. Louis, MO. TV-G

7:00 **WORLD** First Peoples, First Stories TV-PG

7:30 **WORLD** Stories from the Stage: Maternal Journeys

8:00 The American Revolution "The Soul of All America" The war drags on and moves to new theaters: at sea, in Indian Country, and in the South. TV-14-L

8:00 **WORLD** PBS News Hour

9:00 **WORLD** DW The Day

9:30 **WORLD** BBC News

10:00 BBC News

10:00 **WORLD** Independent Lens: Home Court TV-PG

10:30 Amanpour and Company

11:30 Curious Traveler "Curious Lucerne" Lucerne's name origin, dragon lore & Pontius Pilate on Mount Pilatus, Swiss chocolate. TV-G

11:30 **WORLD** Who She Is TV-PG

TUESDAY MAY 5

AM EARLY MORNING

mdnt ICT News with Aliyah Chavez

MDNT **WORLD** First Peoples, First Stories

12:30 NHK Newline

12:30 **WORLD** Stories from the Stage: Maternal Journeys

1:00 Call the Midwife: Season 15, Ep 7

1:00 **WORLD** PBS News Hour

2:00 Maryland on Masterpiece: Ep 1

2:00 **WORLD** Amanpour and Company

3:00 The Count of Monte Cristo on Masterpiece

3:00 **WORLD** Come Back Anytime

4:00 Dogs in the Wild, A Nature Miniseries

4:00 **WORLD** BBC News

4:30 **WORLD** Asia Insight

5:00 She Was First: Misty Copeland

5:00 **WORLD** Newsroom Tokyo

5:28 **WORLD** Direct Talk

5:30 Bare Feet with Mickela Mallozzi

5:43 **WORLD** NHK Short Program

PM EVENING

5:30 BBC News The Context USA

6:00 PBS News Hour

6:00 **WORLD** Shared Planet: Cities TV-PG

7:00 Finding Your Roots "In The Blood" Henry Louis Gates, Jr. uncovers the roots of Michael Douglas and Lena Dunham. TV-PG-V

7:00 **WORLD** Human Footprint: The Urban Jungle TV-14-VL

8:00 The American Revolution "The Most Sacred Thing" Victory at Yorktown secures independence. Americans aspire for a more perfect union. TV-14

8:00 **WORLD** PBS News Hour

9:00 **WORLD** DW The Day

9:30 **WORLD** BBC News

10:00 **WORLD** NOVA: Return to the Moon TV-PG

10:11 BBC News

10:38 Amanpour and Company

11:00 **WORLD** Shared Planet: Cities TV-PG

11:35 Life Unearthed with Ariel Waldman "Prairies: Life In Water" TV-G

WEDNESDAY MAY 6

AM EARLY MORNING

MDNT **WORLD** Human Footprint: The Urban Jungle

12:03 GZERO World with Ian Bremmer

12:30 NHK Newline

1:00 The American Revolution: The Soul of All America

1:00 **WORLD** PBS News Hour

2:00 **WORLD** Amanpour and Company

3:00 Lafayette: The Lost Hero

3:00 **WORLD** Invisible Nation

4:00 Dogs in the Wild, A Nature Miniseries

4:00 **WORLD** BBC News

4:30 **WORLD** GZERO World with Ian Bremmer

5:00 Today's Wild West: Today's Wild West in South Dakota!

5:00 **WORLD** Newsroom Tokyo

5:28 **WORLD** Direct Talk

5:30 **MT** Backroads of Montana: Reading, Riding and Reffing

5:43 **WORLD** NHK Short Program

PM EVENING

5:30 BBC News The Context USA

6:00 PBS News Hour

6:00 **WORLD** China: Frame by Frame TV-14

7:00 Life on Earth: Attenborough's Greatest Adventure Sir David Attenborough tells the story of the wildlife blockbuster that changed his life forever. TV-PG → STORY, BACK COVER

7:00 **WORLD** Photographic Justice: The Corky Lee Story TV-PG

8:00 NOVA "Decoding the Universe: Cosmos" See how discoveries over the past 50 years have revolutionized our understanding of the universe. TV-G

8:00 **WORLD** PBS News Hour

9:00 Shared Planet "Open Spaces" Witness how people and wildlife are finding a balance in Earth's most vulnerable landscapes. TV-PG

9:00 **WORLD** DW The Day

9:30 **WORLD** BBC News

10:00 BBC News

10:00 **WORLD** Snapshots of Confinement TV-PG

10:30 Amanpour and Company

11:00 **WORLD** China: Frame by Frame TV-14

11:30 MotorWeek "2026 Subaru Crosstrek Hybrid" We're on an adventure in the Subaru Crosstrek Hybrid and the Mazda CX-50 Turbo! TV-G

THURSDAY MAY 7

AM EARLY MORNING

mdnt Story in the Public Square

MDNT **WORLD** Photographic Justice: The Corky Lee Story

12:30 NHK Newline

1:00 The American Revolution: The Most Sacred Thing

1:00 **WORLD** PBS News Hour

2:00 **WORLD** Amanpour and Company

3:00 **WORLD** Asian Americans: Breaking Ground

3:14 Ukraine Under Fire

4:00 Invisible Nation

4:00 **WORLD** BBC News

4:30 **WORLD** Story in the Public Square

5:00 Antiques Roadshow: Grants Farm, Hr 2

5:00 **WORLD** Newsroom Tokyo

5:28 **WORLD** Direct Talk

5:43 **WORLD** NHK Short Program

PM EVENING

- 5:30 BBC News The Context USA**
- 6:00 PBS News Hour**
6:00 **WORLD** America ReFramed: Blurring The Color Line
- 7:00 MT Return** A retired Green Beret embarks on an adventure to Vietnam for the first time since the war. TV-PG
→ STORY, P. 3
- 7:00 **WORLD** Tending Clouds TV-14
- 8:00 **WORLD** PBS News Hour
- 8:30 RFDS: Royal Flying Doctor Service "Accountability"** TV-14-LD
- 9:00 **WORLD** DW The Day
- 9:30 Midsomer Murders** "The Devil's Work" Long-buried resentments resurface when the eldest son does something to reignite trouble. TV-PG
- 9:30 **WORLD** BBC News
- 10:00 **WORLD** America ReFramed: Blurring the Color Line
- 11:00 Amanpour and Company**
11:00 **WORLD** Tending Clouds TV-14

FRIDAY MAY 8

AM EARLY MORNING

- mdnt Overheard with Evan Smith: Tim Miller
- MDNT **WORLD** Reel South: 36 Seconds: Portrait of a Hate Crime
- 12:30 NHK Newslines
- 1:00 As Time Goes By: Covering Up
- 1:00 **WORLD** PBS News Hour
- 1:30 Waiting for God: The Conference
- 2:00 Mama Said, Mama Said
- 2:00 **WORLD** Amanpour and Company
- 3:00 Lidia Celebrates America: Flavors That Define Us
- 3:00 **WORLD** First Peoples, First Stories
- 3:30 **WORLD** Stories from the Stage: Maternal Journeys
- 4:00 Great Performances: Now Hear This
- 4:00 **WORLD** BBC News
- 4:30 **WORLD** Balancing Act with John Katko
- 5:00 Ancient Roads from Christ to Constantine: Pagans and the Cult of Martyrs
- 5:00 **WORLD** Newsroom Tokyo
- 5:28 **WORLD** Direct Talk
- 5:43 **WORLD** NHK Short Program

PM EVENING

- 5:30 BBC News The Context USA**
- 6:00 PBS News Hour**
6:00 **WORLD** The American Revolution: The Soul of All America TV-14-L
- 7:00 Washington Week with The Atlantic**
- 7:30 Firing Line with Margaret Hoover**
- 8:00 Great Performances "Suffs"** Witness the American women's suffrage movement in this Tony-winning Broadway musical. TV-14
→ STORY, P. 20

- 8:00 **WORLD** PBS News Hour
- 9:00 **WORLD** Bloomberg Wall Street Week
- 10:00 **WORLD** The American Revolution: The Soul of All America TV-14-L
- 10:30 BBC News**
- 11:00 Amanpour and Company**

SATURDAY MAY 9

AM EARLY MORNING

- mdnt Rob Reiner: The Director → STORY, P. 13
- MDNT **WORLD** 80 Years Later
- 1:00 Patience: Paper Mountain Girl, Pt 2
- 1:00 **WORLD** PBS News Hour
- 2:00 Towns in Tune: Stephenville, NL, Canada
- 2:00 **WORLD** Amanpour and Company
- 3:00 Washington Week with The Atlantic
- 3:00 **WORLD** Human Footprint: The Urban Jungle
- 3:30 Market to Market
- 4:00 This Old House
- 4:00 **WORLD** The Whitney Reynolds Show
- 4:30 Ask This Old House
- 4:30 **WORLD** Consuelo Mack WealthTrack
- 5:00 Wai Lana Yoga: The King of Asanas
- 5:00 **WORLD** To the Contrary with Bonnie Erbe
- 5:30 Daniel Tiger's Neighborhood
- 5:30 **WORLD** Washington Week with The Atlantic

PM EVENING

- 6:00 The Lawrence Welk Show** "Caribbean Cruise" The whole gang climbs aboard an ocean liner for a cruise through the Caribbean. TV-G
- 6:00 **WORLD** The American Revolution: The Most Sacred Thing TV-14
- 7:00 As Time Goes By** "Moving In" Lionel agrees to move in with Jean. They find it difficult to adjust to their new way of life. TV-PG
- 7:30 Waiting for God** "After the Operation" Tom has a spell in hospital with prostate trouble. When he returns home, he finds his son Geoffrey has finally left his completely flipped-out wife and wants to stay with Tom and Diana. They will have none of it. TV-PG
- 8:03 Montana PBS Film Classics** "Anchors Aweigh (1945)" Two young Navy sailors on leave in glitzy Los Angeles for a series of misadventures. → STORY, P. 11
- 8:11 **WORLD** A French Village: On The Platform
- 9:02 **WORLD** Grandma Stand TV-G
- 10:00 **WORLD** The American Revolution: The Most Sacred Thing TV-14
- 10:23 MT 11th & Grant with Eric Funk** "Bebe LeBoeuf" Bebe LeBoeuf adds their Montana flavor to the classic New Orleans Zydeco sound, while preserving the Cajun heritage of this infectious genre. TV-G

- 11:20 Austin City Limits** "Gary Clark Jr./Black Pumas" Grammy-lauded Gary Clark Jr. and Black Pumas deliver next-generation rock and soul. TV-PG

SUNDAY MAY 10

AM EARLY MORNING

- 12:11 **WORLD** Independent Lens: Home Court
- 12:18 Murder in the Mountains: Rubbish Diver
- 1:12 Midsomer Murders: The Devil's Work
- 1:37 **WORLD** Who She Is
- 2:04 **WORLD** America ReFramed: Blurring the Color Line
- 3:00 Grandma Stand
- 3:01 **WORLD** Tending Clouds
- 4:00 Finding Your Roots: In the Blood
- 4:00 **WORLD** On Story: A Conversation with Michael Arndt
- 4:30 **WORLD** To the Contrary with Bonnie Erbe
- 5:00 Albie's Elevator
- 5:00 **WORLD** Washington Week with The Atlantic
- 5:30 Ready Jet Go!
- 5:30 **WORLD** The Open Mind

PM AFTERNOON/EVENING

- 3:00 **WORLD** America ReFramed: Blurring the Color Line
- 3:20 Gene Hackman: Star of the Silver Screen** Explore the remarkable career of legendary actor Gene Hackman. TV-PG → STORY, P. 13
- 4:00 **WORLD** Tending Clouds TV-14
- 4:04 America the Bountiful** "Wheat in Kansas" Capri travels to Kansas to understand what makes it the heart of "America's Breadbasket". TV-G
- 4:32 A Chef's Life** "All Sunchoke'd Up" Flo and Theo's pre-school class visit the restaurant for a meal where table manners are the focus. TV-G
- 5:00 Outside: Beyond the Lens** "New Zealand" The south island of New Zealand, home to some of the most incredible landscapes on Earth, is explored TV-G
- 5:00 **WORLD** A French Village: On The Platform
- 5:30 Compass Points from PBS News**
- 6:00 MT Montana AG Live** "Gallatin Valley Farm Fair" Fourth-graders in the Gallatin Valley get some up-close exposure to farms and ranches. TV-G
→ STORY, P. 14
- 6:00 **WORLD** Life On Earth: Attenborough's Greatest Adventure TV-PG
→ STORY, BACK COVER
- 7:00 Call the Midwife** "Season 15, Ep 8" Sister Veronica must decide her future before the maternity home prepares to close its doors. TV-14
- 7:00 **WORLD** Finding Your Roots: In The Blood

TV-PG-V

8:00 **MaryLand on Masterpiece** "Ep 2" As new revelations emerge, the sisters deal with the fallout from their mother's death. TV-14-L

8:00 **WORLD** Reel South: Night In West Texas TV-PG

9:00 **The Count of Monte Cristo on Masterpiece** "The Last Two" Follow the lives of the noble Crawley family and their staff, set in 1912. TV-14

9:00 **WORLD** Asian Americans: A Question of Loyalty TV-PG

10:00 **Chaplains** "Pt 2" CHAPLAINS continues with a profile of the chaplains team traveling with NASCAR, the tradition of chaplains who serve in the US Senate and House of Representatives, a Rabbi- chaplain working in a Hollywood retirement home, and the newest Muslim chaplain who joined the Detroit Police Department. TV-PG

10:00 **WORLD** Life On Earth: Attenborough's Greatest Adventure TV-PG

→ STORY, BACK COVER

11:00 **Ancient Roads from Christ to Constantine** "Constantine" Jonathan Phillips sheds light on how Rome exerted its fullest effort to eradicate Christianity. TV-PG

11:00 **WORLD** Finding Your Roots: In The Blood TV-PG-V

MONDAY

MAY 11

AM EARLY MORNING

- mdnt RFDS: Royal Flying Doctor Service
- MDNT **WORLD** Reel South: Night in West Texas
- 1:00 Austin City Limits: Gary Clark Jr./Black Pumas
- 1:00 **WORLD** Asian Americans: A Question of Loyalty
- 2:00 **MT** 11th & Grant with Eric Funk: Bebe LeBoeuf
- 2:00 **WORLD** 80 Years Later
- 3:00 The 9 Lives of Barbara Dane
- 4:00 Big Pacific: Mysterious
- 5:00 Classical Tahoe

PM EVENING

- 5:30** **BBC News The Context USA**
- 6:00** **PBS News Hour**
- 6:00 **WORLD** We Said No! No!: A Story of Civil Disobedience TV-G
- 7:00** **Antiques Roadshow** "Grants Farm, Hr 3" Catch a crop of ROADSHOW discoveries at scenic Grant's Farm in St. Louis, Missouri. TV-G
- 7:00 **WORLD** First Peoples, First Stories TV-PG
- 7:30 **WORLD** Stories from the Stage: Beg, Borrow, Or Steal
- 8:00** **MT** **Jonnie** A story of grit and redemption, JONNIE chronicles a female bull rider's intrepid journey. TV-PG-V → STORY, P. 2



WARNER BROS. © 1983, 2005, ALL RIGHTS RESERVED; VIA APT ONLINE. *The Outsiders*, airing Saturday, 5/30 at 8pm, starring (L. to R.) Tom Cruise, Rob Lowe, C. Thomas Howell, Matt Dillon, Ralph Macchio, Emilio Estevez, and Patrick Swayze



More Great Movies This Month
Montana PBS Film Classics
SATURDAYS AT 8:03PM
REPEATS SUNDAY AFTERNOON AT 1PM

National Velvet (1944)

SATURDAY, 5/2 8:03 PM Also 5/3 1pm

Velvet Brown (Elizabeth Taylor), an equine-loving 12-year-old, owns a rambunctious horse, "The Pie", and decides to train it for England's Grand National race, aided by former jockey Mi Taylor (Mickey Rooney).

Anchors Aweigh (1945)

SATURDAY, 5/9 8:03 PM Also 5/10 1pm

Two young sailors, Joe (Gene Kelly) and Clarence (Frank Sinatra) are on leave in glitzy LA. Both men find themselves falling for a wannabe singer, setting off a series of misadventures in comedy and song.

On the Town (1949)

SATURDAY, 5/16 8:03 PM Also 5/17 1pm

Fun-loving sailors Gabey (Gene Kelly), Chip (Frank Sinatra) and Ozzie (Jules Munshin) have 24 hours of shore leave in NYC. All three get involved in adventures with local girls.

Being the Ricardos (2021)

SATURDAY, 5/23 8:03 PM Also 5/24 1pm

In 1952, Hollywood power couple Lucille Ball (Nicole Kidman) and Desi Arnaz (Javier Bardem) face personal and professional obstacles that threaten their careers, relationship, and hit TV show.

The Outsiders (1983)

SATURDAY, 5/30 8:03 PM Also 5/31 1pm

A teen gang in rural Oklahoma is perpetually at odds with another gang. After the death of a rival, the boys must contend with the consequences of their violent lives.

- 8:00 **WORLD** PBS News Hour
- 9:00 **WORLD** DW The Day
- 9:30** **MT** **Gravel in Her Gut and Spit in Her Eye** A look back at Montana Western writer Dorothy M. Johnson's life and her place in history. TV-PG-L
- 9:30 **WORLD** BBC News
- 10:00** **BBC News**
- 10:00 **WORLD** Betrayed: Surviving an American Concentration Camp TV-PG
- 10:30** **Amanpour and Company**
- 11:00 **WORLD** We Said No! No!: A Story of Civil Disobedience TV-G
- 11:30** **Curious Traveler** "Curious Tallinn" Tallin's UNESCO Old Town, Kiek in de Kok and Fat Margaret towers, unicorn horn powder. TV-G

TUESDAY **MAY 12**

- AM EARLY MORNING**
- mdnt ICT News with Aliyah Chavez
- MDNT **WORLD** First Peoples, First Stories
- 12:30 NHK Newslines
- 12:30 **WORLD** Stories from the Stage: Beg, Borrow, Or Steal
- 1:00 Call the Midwife: Season 15, Ep 8
- 1:00 **WORLD** PBS News Hour
- 2:00 MaryLand on Masterpiece: Ep 2
- 2:00 **WORLD** Amanpour and Company
- 3:00 The Count of Monte Cristo on Masterpiece
- 3:00 **WORLD** Grandma Stand
- 4:00 Big Pacific: Violent
- 4:00 **WORLD** BBC News
- 4:30 **WORLD** Asia Insight
- 5:00 She Was First: Sonia Manzano
- 5:00 **WORLD** Newsroom Tokyo
- 5:28 **WORLD** Direct Talk
- 5:30 Bare Feet with Mickela Mallozzi: Little Sri Lanka
- 5:43 **WORLD** NHK Short Program

PM EVENING

- 5:30** **BBC News The Context USA**
- 6:00** **PBS News Hour**
- 6:00 **WORLD** Shared Planet: Open Spaces TV-PG
- 7:00** **Finding Your Roots** "Far from Home" Cyndi Lauper, Jamie Chung, and Danny Trejo discover their family tree with Henry Louis Gates. TV-PG
- 7:00 **WORLD** Human Footprint: The Ground Below TV-PG
- 8:00** **Finding Your Roots** "Larger Than Life" Henry Louis Gates, Jr. connects Lea Salonga & Amanda Seyfried to their dramatic ancestors. TV-PG-V
- 8:00 **WORLD** PBS News Hour
- 9:00** **FRONTLINE** "The President vs. The Fed"
- 9:00 **WORLD** DW The Day
- 9:30 **WORLD** BBC News

- 10:00** **BBC News**
- 10:00 **WORLD** NOVA: Decoding the Universe: Cosmos TV-G
- 10:30** **Amanpour and Company**
- 11:00 **WORLD** Shared Planet: Open Spaces TV-PG
- 11:30** **Life Unearthed with Ariel Waldman** "Prairies: Life In Motion" TV-G

WEDNESDAY **MAY 13**

- AM EARLY MORNING**
- mdnt GZERO World with Ian Bremmer
- MDNT **WORLD** Human Footprint: The Ground Below
- 12:30 NHK Newslines
- 1:00 Independent Lens: Natchez
- 1:00 **WORLD** PBS News Hour
- 2:00 **WORLD** Amanpour and Company
- 2:30 Eudora
- 3:00 **WORLD** Reel South: Night in West Texas
- 3:30 This Moment in America: Artists in the Heartland
- 4:00 Big Pacific: Voracious
- 4:00 **WORLD** BBC News
- 4:30 **WORLD** GZERO World with Ian Bremmer
- 5:00 Today's Wild West: Wyoming Episode!
- 5:00 **WORLD** Newsroom Tokyo
- 5:28 **WORLD** Direct Talk
- 5:30 **MT** Backroads of Montana: Keys to Learning
- 5:43 **WORLD** NHK Short Program

PM EVENING

- 5:30** **BBC News The Context USA**
- 5:30 **WORLD** Independent Lens: Natchez TV-14
- 6:00** **PBS News Hour**
- 7:00** **Nature** "Attenborough and the Sea Dragon" The discovery of the Ichthyosaurus, a fish lizard that lived during the age of dinosaurs, is explored. TV-PG
- 7:00 **WORLD** FRONTLINE: The President vs. The Fed
- 8:00** **NOVA** "Decoding the Universe: Quantum" Discover the world of the subatomic realm in the quantum universe. TV-G
- 8:00 **WORLD** PBS News Hour
- 9:00** **Shared Planet** "Forests" Journey from Guatemala to Japan to meet the pioneers restoring the way we coexist. TV-PG
- 9:00 **WORLD** DW The Day
- 9:30 **WORLD** BBC News
- 10:00** **BBC News**
- 10:00 **WORLD** Montiers: An American Story TV-PG
- 10:30** **Amanpour and Company**
- 10:30 **WORLD** Independent Lens: Natchez TV-14
- 11:30** **MotorWeek** TV-G

THURSDAY **MAY 14**

- AM EARLY MORNING**
- mdnt Story in the Public Square
- MDNT **WORLD** FRONTLINE: The President vs. The Fed
- 12:30 NHK Newslines
- 1:00 The Bomb
- 1:00 **WORLD** PBS News Hour
- 2:00 **WORLD** Amanpour and Company
- 3:00 Atomic Echoes: Untold Stories from World War II
- 3:00 **WORLD** Asian Americans: A Question of Loyalty
- 4:00 Big Pacific: Passionate
- 4:00 **WORLD** BBC News
- 4:30 **WORLD** Story in the Public Square
- 5:00 Antiques Roadshow: Grants Farm, Hr 3
- 5:00 **WORLD** Newsroom Tokyo
- 5:28 **WORLD** Direct Talk
- 5:43 **WORLD** NHK Short Program

PM EVENING

- 5:30** **BBC News The Context USA**
- 6:00** **PBS News Hour**
- 6:00 **WORLD** America ReFramed: Geographies of Kinship
- 7:00** **MT** **Jonnie** A story of grit and redemption, JONNIE chronicles a female bull rider's intrepid journey. TV-PG-V → STORY, P. 2
- 7:30 **WORLD** Ghost Mountain: The Second Killing Fields of Cambodia TV-PG
- 8:00 **WORLD** PBS News Hour
- 8:30** **MT** **Gravel in Her Gut and Spit in Her Eye** A look back at Montana Western writer Dorothy M. Johnson's life and her place in history. TV-PG-L
- 9:00** **Midsomer Murders** "Book of the Dead," Barnaby must unravel the clues to find the killer of a famous author. TV-PG
- 9:00 **WORLD** DW The Day
- 9:30 **WORLD** BBC News
- 10:00 **WORLD** America ReFramed: Geographies of Kinship
- 10:30** **BBC News**
- 11:00** **Amanpour and Company**
- 11:30 **WORLD** Ghost Mountain: The Second Killing Fields of Cambodia TV-PG

FRIDAY **MAY 15**

- AM EARLY MORNING**
- mdnt Overheard with Evan Smith: Mitch Albom
- MDNT **WORLD** Home is a Hotel
- 12:30 NHK Newslines
- 1:00 As Time Goes By: Moving In
- 1:00 **WORLD** PBS News Hour
- 1:30 Waiting for God: After the Operation
- 2:00 Great Performances: Suffis → STORY, P. 20
- 2:00 **WORLD** Amanpour and Company

- 3:00 **WORLD** First Peoples, First Stories
- 3:30 **WORLD** Stories from the Stage: Beg, Borrow, Or Steal
- 4:00 **WORLD** BBC News
- 4:30 Perfect 36: When Women Won the Vote
- 4:30 **WORLD** Balancing Act with John Katko
- 5:00 Ancient Roads from Christ to Constantine: Constantine
- 5:00 **WORLD** Newsroom Tokyo
- 5:28 **WORLD** Direct Talk
- 5:43 **WORLD** NHK Short Program

PM EVENING

- 5:30 BBC News The Context USA**
- 6:00 PBS News Hour**
- 6:30 **WORLD** POV: Who's Afraid of Nathan Law? TV-PG-V
- 7:00 Washington Week with The Atlantic**
- 7:30 Firing Line with Margaret Hoover**
- 8:00 Great Performances "Top Hat"** Enjoy this musical inspired by the 1935 movie musical starring Fred Astaire and Ginger Rogers. TV-PG → STORY, P. 20
- 8:00 **WORLD** PBS News Hour
- 9:00 **WORLD** Bloomberg Wall Street Week
- 10:00 **WORLD** POV: Against The Tide TV-14
- 10:30 BBC News**
- 11:00 Amanpour and Company**
- 11:30 **WORLD** POV: Who's Afraid of Nathan Law? TV-PG-V

SATURDAY MAY 16

AM EARLY MORNING

- mdnt Gene Hackman: Star of the Silver Screen → STORY, P. 13
- 1:00 Patience: The Missing Link
- 1:00 **WORLD** PBS News Hour
- 2:00 Towns in Tune: Newberry, SC, USA and Bay Bulls, NL, Canada, Pt 1
- 2:00 **WORLD** Amanpour and Company
- 3:00 Washington Week with The Atlantic
- 3:00 **WORLD** Human Footprint: The Ground Below
- 3:30 Market to Market
- 4:00 This Old House
- 4:00 **WORLD** The Whitney Reynolds Show
- 4:30 Ask This Old House
- 4:30 **WORLD** Consuelo Mack WealthTrack
- 5:00 Wai Lana Yoga: Rock & Roll
- 5:00 **WORLD** To the Contrary with Bonnie Erbe
- 5:30 Daniel Tiger's Neighborhood
- 5:30 **WORLD** Washington Week with The Atlantic

PM EVENING

- 6:00 The Lawrence Welk Show "Tribute to Irving Berlin"** "Alexander's Ragtime Band" kicks off this tribute to Irving Berlin. TV-G
- 6:00 **WORLD** American Masters: Nam June Paik TV-M



GETTY IMAGES, ALL RIGHTS RESERVED; VIA APT ONLINE.
Rob Reiner on set.

Stories of Iconic Stars

SUNDAYS AFTER THE MOVIE / REPEATS TUESDAY AT NOON

Rob Reiner: The Director

SUNDAY 5/3 3PM Also 5/5 noon

The extraordinary work of Reiner's remarkable career, both as an actor and his role as a leading film director.

Gene Hackman: Star of the Silver Screen

SUNDAY 5/10 3PM Also 5/12 noon

The extraordinary work of Reiner's remarkable career, both as an actor and his role as a leading film director.

Julie Andrews Forever

SUNDAY 5/17 3PM Also 5/19 noon

The impressive trajectory of the British performing legend, who rose from a child entertainer to an Oscar-winning actress.

Clint Eastwood: The Last Legend

SUNDAY 5/24 3PM Also 5/26 noon

Explore the myth and the creative talent of Eastwood, who's still active in his 90s, both in front of and behind the camera.

WARNER BROS., ALL RIGHTS RESERVED; VIA APT ONLINE.
Clint Eastwood on the set of DIRTY HARRY.

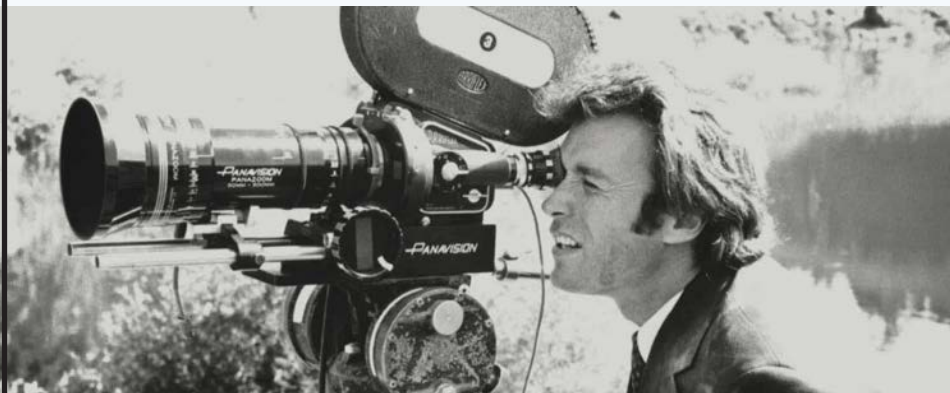




PHOTO: MSU UNIVERSITY COMMUNICATIONS

Preparing to fly a drone at the annual Field Day at the Arthur H. Post Research Farm in Bozeman, MT.



More Springtime Ag Conversation

Montana AG Live

SUNDAYS AT 6PM

REPEATS SUNDAY MORNINGS AT 11AM

A regular call-in information program dealing with agricultural and gardening issues in Montana.

Precision Agriculture: Update

SUNDAY 5/3 6PM Also 5/10 11am

Precision Agriculture helps producers reduce costs, limit chemical use, and make more informed management decisions. Ricardo Pinto, Precision Agriculture Specialist at the Northern Agricultural Research Center, joins the panel to share more about these technologies and their role in modern ag.

Gallatin Valley Farm Fair

SUNDAY 5/10 6PM Also 5/17 11am

The Gallatin Valley Farm Fair: "WHAT FUN!" Just ask a Gallatin Valley fourth-grade student about their favorite field trip. This week, Patti Soares, the Chair of the Gallatin Valley Farm Fair, joins the panel to help us understand how successful this adventure has become.

Montana Department of Livestock

SUNDAY 5/17 6PM Also 5/24 11am

The Montana Department of Livestock helps ensure that our state's livestock industry remains one of the best in the nation. Mike Honeycutt, Executive Officer of the agency, joins the panel this week to help us learn about the wide range of activities and programs managed by the Department.

Agri-Tourism Update

SUNDAY 5/31 6PM Also 6/7 11am

Tourism & the Production Agriculture business - it's a thing, and it's growing in Montana. This week, we welcome Melissa Weddell, the Director of the Institute for Tourism & Recreation Research at the University of Montana, to learn more about Montana's visitors meeting the real farm & ranch world.

- 7:00 As Time Goes By "Branching Out"** Jean is looking for someone to run a secretarial agency. Work for Lionel seems to have dried up. TV-PG
- 7:30 Waiting for God** "The Bayview Conservation Society" Harvey has asked a Japanese designer to look at Bayview with a view to "packing in more oldies per square foot". This leads him into immediate confrontation with Tom and the newly formed Bayview Conservation Society. TV-PG
- 8:00 **WORLD** A French Village: The Man Without A Name
- 8:03 Montana PBS Film Classics "On the Town (1949)"** Fun-loving sailors Gabey, Chip, and Ozzie have 24 hours of shore leave in New York City. TV-PG
→ STORY, P. 11
- 9:00 **WORLD** Shinmachi: Stronger Than a Tsunami
- 9:43 Austin City Limits "Jelly Roll/The War and Treaty"** Grammy-nominated Nashville sensations Jelly Roll and The War and Treaty thrill in a powerhouse hour. TV-PG
- 10:00 **WORLD** American Masters: Nam June Paik TV-M
- 10:40 The Rolling Stones: Grrr Live!** Celebrate the band's 50th anniversary with Bruce Springsteen, Lady Gaga and more in a 2012 concert. TV-PG

SUNDAY MAY 17

- AM EARLY MORNING**
- mdnt **Murder in the Mountains: Firestarter**
 - MDNT **WORLD** Betrayed: American Concentration Camp
 - 1:00 **Midsomer Murders: Book of the Dead**
 - 1:00 **WORLD** We Said No! No!: A Story of Civil Disobedience
 - 2:00 **WORLD** America ReFramed: Geographies of Kinship
 - 2:30 **On Story: Script to Screen: The Nice Guys**
 - 3:00 **Iconic America: Our Symbols and Stories with David Rubenstein: The Hollywood Sign**
 - 3:30 **WORLD** Ghost Mountain: The Second Killing Fields of Cambodia
 - 4:00 **Finding Your Roots: Far from Home**
 - 4:00 **WORLD** On Story: The Writer Producer Relationship with Christine Vachon
 - 4:30 **WORLD** To the Contrary with Bonnie Erbe
 - 5:00 **Albie's Elevator**
 - 5:00 **WORLD** Washington Week with The Atlantic
 - 5:30 **Ready Jet Go!**
 - 5:30 **WORLD** The Open Mind
-
- PM AFTERNOON/EVENING**
- 3:00 Julie Andrews Forever** Follow the impressive trajectory of the legendary Julie Andrews. TV-PG → STORY, P. 13

3:00 **WORLD** America ReFramed: Geographies of Kinship

4:00 America the Bountiful "Honey in North Dakota" Join Capri in North Dakota to learn about their nation-leading honey production. TV-G

4:30 A Chef's Life "Heavenly Hocks" A view behind the scenes reveals the hot and cold of curing ham. TV-G

4:30 **WORLD** Ghost Mountain: The Second Killing Fields of Cambodia TV-PG

5:00 Outside: Beyond the Lens "Super Bloom" Heavy winter rains in California lead to a springtime phenomenon called the "Super Bloom." TV-G

5:00 **WORLD** A French Village: The Man Without A Name

5:30 Compass Points from PBS News

6:00 MT Montana AG Live "Montana Department of Livestock" The MT Dept. of Livestock helps ensure our livestock industry remains one of the best. TV-G → STORY, P. 14

6:00 **WORLD** Nature: Attenborough and the Sea Dragon TV-PG

7:00 Lucy Worsley's Royal Myths & Secrets "Elizabeth I: The Warrior Queen" Explore how Elizabeth I's image as a warrior queen shaped British national identity for centuries. TV-PG

7:00 **WORLD** Finding Your Roots: Far from Home TV-PG

8:00 Maryland on Masterpiece "Ep 3" Everything comes to a head as Richard and Jim arrive at the Isle of Man. TV-14-L

8:00 **WORLD** Reel South: Louder Than Guns TV-PG

9:00 Downton Abbey Season 1 on Masterpiece "Pt 1" When the Titanic sinks Lord Grantham loses his immediate heirs throwing Downton Abbey into turmoil. TV-PG → STORY, P. 8

9:00 **WORLD** Asian Americans: Good Americans TV-PG

10:00 **WORLD** Nature: Attenborough and the Sea Dragon TV-PG

10:30 Rick Steves' Europe "The Heart of England" Rick Steves visits Winston Churchill's birthplace at Blenheim Palace and polishes his pub etiquette. TV-G

11:00 Giants Rising Journey into the majestic redwood forests and explore their secrets. TV-G

11:00 **WORLD** Finding Your Roots: Far from Home TV-PG

MONDAY MAY 18

AM EARLY MORNING
 mdnt Stand Together as One
 MDNT **WORLD** Reel South: Louder Than Guns

1:00 Austin City Limits: Jelly Roll /The War and Treaty

1:00 **WORLD** Asian Americans: Good Americans

2:00 **MT** Jonnie → STORY, P. 2

2:00 **WORLD** Home is a Hotel

3:00 **WORLD** American Muslims: A History Revealed: A New Hope for Freedom

3:30 **MT** Playing Like a Girl: The House That Rob Built

3:30 **WORLD** American Muslims: A History Revealed: A South Asian in the Southwest

4:00 **WORLD** BBC News

4:30 **MT** Native Ball: Legacy of a Trailblazer

4:30 **WORLD** The Whitney Reynolds Show

5:00 Classical Tahoe

5:00 **WORLD** Newsroom Tokyo

5:28 **WORLD** Direct Talk

5:43 **WORLD** NHK Short Program

PM EVENING

5:30 BBC News The Context USA

6:00 PBS News Hour

6:00 **WORLD** Atomic People TV-M

7:00 Antiques Roadshow "Junk in the Trunk 15" Visit all five cities from ROADSHOW's celebratory Season 30 for never before-seen finds! TV-G

7:30 **WORLD** Stories from the Stage: Stranger Than Fiction

8:00 MT Backroads of Montana "Colors & Characters" Montana agates, carousel ponies and roadside art, new and old. Hosted in Red Lodge. TV-G → STORY, P. 2

8:00 **WORLD** PBS News Hour

8:30 MT Backroads of Montana "Horsepower & Heat" From drag racing to barbecue to skijoring, passions are in motion in this episode. TV-G

9:00 Independent Lens "Light of the Setting Sun" A filmmaker confronts her Chinese family's trauma and questions whether the cycle can end. TV-14 → STORY, P. 17

9:00 **WORLD** DW The Day

9:30 **WORLD** BBC News

10:00 **WORLD** The Vow from Hiroshima TV-PG

10:30 BBC News

11:00 Amanpour and Company

11:00 **WORLD** Atomic People TV-M

TUESDAY MAY 19

AM EARLY MORNING
 mdnt ICT News with Aliyah Chavez
 12:30 NHK Newslines
 12:30 **WORLD** Stories from the Stage: Stranger Than Fiction

1:00 Lucy Worsley's Royal Myths & Secrets: Elizabeth I: The Warrior Queen

1:00 **WORLD** PBS News Hour

2:00 Maryland on Masterpiece: Ep 3

2:00 **WORLD** Amanpour and Company

3:00 Downton Abbey Season 1 on Masterpiece: Pt 1 → STORY, P. 8

3:00 **WORLD** Shinmachi: Stronger Than a Tsunami

4:00 **WORLD** BBC News

4:30 Rick Steves' Europe: The Heart of England

4:30 **WORLD** Asia Insight

5:00 She Was First: Jacqueline Woodson, Writer

5:00 **WORLD** Newsroom Tokyo

5:28 **WORLD** Direct Talk

5:30 Bare Feet with Mickela Mallozzi: Arab-American

5:43 **WORLD** NHK Short Program

6:00 **SEE DAYTIME SCHEDULE, P. 23**

PM EVENING

5:30 BBC News The Context USA

6:00 PBS News Hour

6:00 **WORLD** Shared Planet: Forests TV-PG

7:00 Finding Your Roots "Stranger Than Fiction" Henry Louis Gates, Jr. reveals inspiring ancestors of novelist Amy Tan & poet Rita Dove. TV-14

7:00 **WORLD** Human Footprint: Shelf Life TV-PG-V

8:00 American Masters "W.E.B. du Bois: Rebel with a Cause" Explore the life and legacy of the notable Black scholar and civil rights pioneer. TV-14 → STORY, P. 19

8:00 **WORLD** PBS News Hour

9:00 **WORLD** DW The Day

9:30 **WORLD** BBC News

10:00 BBC News

10:00 **WORLD** NOVA: Decoding the Universe: Quantum TV-G

10:30 Amanpour and Company

11:00 **WORLD** Shared Planet: Forests TV-PG

11:30 Roadtrip Nation: Where Wellbeing Grows TV-G

WEDNESDAY MAY 20

AM EARLY MORNING
 mdnt GZERO World with Ian Bremmer
 MDNT **WORLD** Human Footprint: Shelf Life

12:30 NHK Newslines

1:00 Independent Lens: Light of the Setting Sun → STORY, P. 17

1:00 **WORLD** PBS News Hour

2:00 **WORLD** Amanpour and Company

2:30 **MT** Return → STORY, P. 3

3:00 **WORLD** Reel South: Louder Than Guns

4:00 What I Want You to Know

4:00 **WORLD** BBC News

4:30 **WORLD** GZERO World with Ian Bremmer

5:00 Today's Wild West: Western Creativity in the Spotlight!

- 5:00 **WORLD** Newsroom Tokyo
- 5:28 **WORLD** Direct Talk
- 5:30 **MT** Backroads of Montana: Timeless and True
- 5:43 **WORLD** NHK Short Program

PM EVENING

- 5:30 **BBC News The Context USA**
- 6:00 **PBS News Hour**
 - 6:30 **WORLD** Independent Lens: Light of the Setting Sun TV-14 → STORY, P. 17
- 7:00 **Nature** "Attenborough's Wonder of Song" As humankind gets noisier, the beautiful songs of the humpback whale are being downed out. TV-PG-S
- 8:00 **NOVA** "When Whales Could Walk" Egyptian desert fossils reveal clues to the evolution of the biggest animals on Earth. TV-PG
- 8:00 **WORLD** PBS News Hour
- 9:00 **Shared Planet** "Waters" Dive into the stories of people setting a new standard for aquatic wildlife protection. TV-PG
- 9:00 **WORLD** DW The Day
- 9:30 **WORLD** BBC News
- 10:00 **BBC News**
 - 10:00 **WORLD** A Life Reimagined: The George Masa Story TV-PG
- 10:30 **Amanpour and Company**
- 11:30 **MotorWeek** TV-G
 - 11:30 **WORLD** Independent Lens: Light of the Setting Sun TV-14 → STORY, P. 17

THURSDAY MAY 21

AM EARLY MORNING

- mdnt Story in the Public Square
- 12:30 NHK Newsline
- 1:00 Great Performances at the Met: Arabella
- 1:00 **WORLD** PBS News Hour
- 2:00 **WORLD** Amanpour and Company
- 3:00 **WORLD** Asian Americans: Good Americans
- 4:00 Breaking Enigma: A World War II Game Changer
- 4:00 **WORLD** BBC News
- 4:30 **WORLD** Story in the Public Square
- 5:00 Antiques Roadshow: Junk in the Trunk 15
- 5:00 **WORLD** Newsroom Tokyo
- 5:28 **WORLD** Direct Talk
- 5:43 **WORLD** NHK Short Program

PM EVENING

- 5:30 **BBC News The Context USA**
- 6:00 **PBS News Hour**
 - 6:00 **WORLD** Price of Paradise TV-PG
- 7:00 **MT** Montana PBS Reports: IM-PACT "The Primary Election/Immigration Enforcement" How the primary races are unfolding. Plus, the ripple effects of immigration enforcement.

TV-G → STORY, P. 5

- 7:00 **WORLD** Ah Quon McElrath: The Struggle Never Ends! TV-G

- 7:30 **MT** Backroads of Montana "Colors & Characters" Montana agates, carousel ponies and roadside art, new and old. Hosted in Red Lodge. TV-G → STORY, P. 2

- 8:00 **RFDS: Royal Flying Doctor Service** New Senior Medical Officer Eliza Harrod's first retrieval with the RFDS turns problematic. TV-14

8:00 **WORLD** PBS News Hour

- 9:00 **Midsomer Murders** "Claws Out" Barnaby and Winter are drawn into the world of dognapping while trying to solve a murder. TV-PG

9:00 **WORLD** DW The Day

9:30 **WORLD** BBC News

- 10:00 **WORLD** Pacific Heartbeat: Island Cowgirls TV-PG

- 10:30 **BBC News**

- 11:00 **Amanpour and Company**

11:00 **WORLD** Price of Paradise TV-PG

FRIDAY MAY 22

AM EARLY MORNING

- mdnt Overheard with Evan Smith: Jeff Tweedy
- MDNT **WORLD** Ah Quon McElrath: The Struggle Never Ends!
- 12:30 NHK Newsline
- 1:00 As Time Goes By : Branching Out
- 1:00 **WORLD** PBS News Hour
- 1:30 Waiting for God: The Bayview Conservation Society
- 2:00 Great Performances: Top Hat → STORY, P. 20
- 2:00 **WORLD** Amanpour and Company
- 3:00 **WORLD** Montiers: An American Story
- 3:30 **WORLD** Stories from the Stage: Stranger Than Fiction
- 4:00 **WORLD** BBC News
- 4:30 Remember Pearl Harbor
- 4:30 **WORLD** Balancing Act with John Katko
- 5:00 **WORLD** Newsroom Tokyo
- 5:28 **WORLD** Direct Talk
- 5:43 **WORLD** NHK Short Program

PM EVENING

- 5:30 **BBC News The Context USA**
- 6:00 **PBS News Hour**
 - 6:00 **WORLD** American Masters: W.E.B. du Bois: Rebel with a Cause TV-14 → STORY, P. 19
- 7:00 **Washington Week with The Atlantic**
- 7:30 **Firing Line with Margaret Hoover**
- 8:00 **Great Performances** "An Evening with Nicole Scherzinger" Nicole Scherzinger returns to London for a solo concert at Royal Albert Hall. TV-PG → STORY, P. 20

- 8:00 **WORLD** PBS News Hour
- 9:00 **WORLD** Bloomberg Wall Street Week

- 9:30 **Great Performances** "Now Hear This: Rising Stars" Discover Singapore's rising star, Chloe Chua, with host Scott Yoo. TV-G

10:00 **WORLD** Becoming Frederick Douglass TV-14

- 10:30 **BBC News**

- 11:00 **Amanpour and Company**

11:00 **WORLD** American Masters: W.E.B. du Bois: Rebel with a Cause TV-14 → STORY, P. 19

SATURDAY MAY 23

AM EARLY MORNING

- mdnt Julie Andrews Forever → STORY, P. 13
- 1:00 Patience: The Locked Room
- 1:00 **WORLD** PBS News Hour
- 2:00 Towns in Tune: Newberry, SC, USA and Bay Bulls, NL, Canada, Pt 2
- 2:00 **WORLD** Amanpour and Company
- 3:00 Washington Week with The Atlantic
- 3:00 **WORLD** Human Footprint: Shelf Life
- 3:30 Market to Market
- 4:00 This Old House
- 4:00 **WORLD** The Whitney Reynolds Show
- 4:30 Ask This Old House
- 4:30 **WORLD** Consuelo Mack WealthTrack
- 5:00 Wai Lana Yoga: The Crunch Alternative
- 5:00 **WORLD** To the Contrary with Bonnie Erbe
- 5:30 Daniel Tiger's Neighborhood
- 5:30 **WORLD** Washington Week with The Atlantic

PM EVENING

- 6:00 **The Lawrence Welk Show** "Grammy Award Songs" This 1974 show salutes the songs the recording industry has called the "best". TV-G
- 6:00 **WORLD** Fanny: The Right to Rock TV-14-LD
- 7:00 **As Time Goes By** "The Miniseries" Alistair announces that an American TV company is interested in their love story as a mini-series. TV-PG
- 7:30 **Waiting for God** "A Royal Visit?" Diana is less than thrilled with the prospect of a Royal visit to Bayview. Her stern views on the British class system and the Royal family are directly opposed to Tom's pronounced sense of patriotism. TV-PG
- 7:30 **WORLD** American Masters: Ten Times Better TV-PG
- 8:00 **WORLD** A French Village: The Group
- 8:03 **Montana PBS Film Classics** "Being the Ricardos" Lucille Ball and Desi Arnaz face personal and professional obstacles that threaten their careers. TV-M → STORY, P. 11
- 9:00 **WORLD** FRONTLINE: Battle for Tibet
- 10:00 **WORLD** Fanny: The Right to Rock TV-14-LD
- 10:16 **Austin City Limits** "Chris Stapleton"

Superstar Chris Stapleton returns with a scorching hour of country-rock classics from his LP Higher. TV-PG

11:14 Stand Together As One Explore the epic collaboration of "We Are The World" and the global concert Live Aid. TV-PG

11:30 **WORLD** American Masters: Ten Times Better TV-PG

SUNDAY MAY 24

AM EARLY MORNING

MDNT **WORLD** Atomic People

12:11 Murder in the Mountains: Rotten Eggs

1:04 Midsomer Murders: Claws Out

1:30 **WORLD** Stories from the Stage: Stranger Than Fiction

2:00 **WORLD** Price of Paradise

2:33 On Story: A Conversation with Michael Arndt

3:03 Iconic America: Our Symbols and Stories with David Rubenstein: The Gadsden Flag

3:00 **WORLD** Ah Quon McElrath: The Struggle Never Ends!

4:00 Finding Your Roots: Stranger Than Fiction

4:00 **WORLD** On Story: On the Naked Gun

4:30 **WORLD** To the Contrary with Bonnie Erbe

5:00 Albie's Elevator

5:00 **WORLD** Washington Week with The Atlantic

5:30 Ready Jet Go!

5:30 **WORLD** The Open Mind

PM AFTERNOON/EVENING

3:00 **WORLD** Price of Paradise TV-PG

3:15 Clint Eastwood: The Last Legend Explore the 70-year career both in front of and behind the camera of Clint Eastwood. TV-14 → STORY, P. 13

4:07 America the Bountiful "Lobster in Maine" Capri travels to Rockland to experience the annual Maine Lobster Festival. TV-G

4:00 **WORLD** Ah Quon McElrath: The Struggle Never Ends! TV-G

4:35 A Chef's Life "Mayo - The Mother Sauce" Vivian holds a mayo blind taste test and a surprise brand takes top prize. TV-G

5:03 Outside: Beyond the Lens "Utah Overland" A 50-mile drive through Utah's remote Cottonwood Canyon showcases a world of amazing landscapes. TV-G

5:00 **WORLD** A French Village: The Group

5:30 Compass Points from PBS News

6:00 MT Montana, Montana, Glory of the Seas "The Story of the Two USS Montana Warships" An ironic story of two USS MONTANA warships & the sailors who won the hearts of Montanans. → STORY, P. 3

6:00 **WORLD** Nature: Attenborough's Wonder of Song TV-PG-S

7:00 National Memorial Day Concert 2026 Joe Mantegna and Gary Sinise once again host the National Memorial Day Concert. TV-G → STORY, P. 3



CREDIT: VICKY DU
An archival photo of Vicky as a child and her Mom in Taipei, Taiwan

More Great Independent Films

Independent Lens

MONDAYS AT 9PM / REPEATS WEDNESDAY, 1AM

Featuring documentaries united by the creative freedom, artistic achievement, and unflinching visions of independent filmmakers.

Light of the Setting Sun

MONDAY 5/18 9PM Also 5/20 1am
WORLD: 5/20 6:30pm & 10:30pm; 5/21 7:30am

After a family member has a mental breakdown, filmmaker Vicky Du traces generational trauma rooted in her family's displacement during China's 1949 revolution.

Third Act

MONDAY 5/25 9PM Also 5/27 1am
WORLD: 5/27 5:30pm & 10:30pm; 5/28 6:30am; 5/30 10am

Filmmaker Tadashi Nakamura chronicles his father Robert A. Nakamura's life - from WWII incarceration to becoming a pioneer of Asian American cinema.

CREDIT: STEVEN A. HELLER
Bob Nakamura looking out of the window of a barrack at Manzanar



- 7:00 **WORLD** Finding Your Roots: Stranger Than Fiction TV-14
- 8:00 **WORLD** Reel South: Drowned Land TV-PG
- 8:30 National Memorial Day Concert 2026** Joe Mantegna and Gary Sinise once again host the National Memorial Day Concert. TV-G → STORY, P. 3
- 9:00 **WORLD** Asian Americans: Generation Rising TV-14-L
- 10:00 Downton Abbey Season 1 on Masterpiece** "Pt 2" Mary entertains three suitors and the shocking former life of Carson, the butler, is unmasked. TV-PG → STORY, P. 8
- 10:00 **WORLD** Nature: Attenborough's Wonder of Song TV-PG-S
- 11:00 **WORLD** Finding Your Roots: Stranger Than Fiction TV-14
- 11:30 Rick Steves' Europe** "West England" Quaint Cotswold villages and dramatic prehistoric stone circles of Stonehenge are explored. TV-G

MONDAY MAY 25

- AM EARLY MORNING**
- mdnt RFDS: Royal Flying Doctor Service
- MDNT **WORLD** Reel South: Drowned Land
- 1:00 Austin City Limits: Chris Stapleton
- 1:00 **WORLD** Asian Americans: Generation Rising
- 2:00 **MT** Montana PBS Reports: IMPACT: The Primary Election/Immigration Enforcement → STORY, P. 5
- 2:00 **WORLD** Pacific Heartbeat: Island Cowgirls
- 2:30 **MT** Backroads of Montana: Colors & Characters → STORY, P. 2
- 3:00 **MT** Montana, Montana, Glory of the Seas: The Story of the Two USS Montana Warships → STORY, P. 3
- 3:00 **WORLD** Ink & Linda
- 4:00 Rohna Classified
- 4:00 **WORLD** BBC News
- 4:30 **WORLD** The Whitney Reynolds Show
- 5:00 Classical Tahoe
- 5:00 **WORLD** Newsroom Tokyo
- 5:28 **WORLD** Direct Talk
- 5:43 **WORLD** NHK Short Program

- PM EVENING**
- 5:30 BBC News The Context USA**
- 6:00 PBS News Hour**
- 6:00 **WORLD** Local, USA: A Tale of Three Chinatowns
- 7:00 Antiques Roadshow** "Celebrating Asian-Pacific Heritage" Travel with ROADSHOW to watch incredible items with Asian and Pacific Islands origins! TV-G
- 7:30 **WORLD** Stories from the Stage: Being Asian
- 8:00 Antiques Roadshow** "Cheekwood Estate & Gardens, Hr 2" ROADSHOW

- visits Music City for an astonishing \$75,000 to \$85,000 find! TV-G
- 8:00 **WORLD** PBS News Hour
- 9:00 Independent Lens** "Third Act" Father and son filmmakers use their shared medium to explore art, trauma, and legacy. TV-14 → STORY, P. 17
- 9:00 **WORLD** DW The Day
- 9:30 **WORLD** BBC News
- 10:00 **WORLD** Builders of the Silicon Dream TV-G
- 10:30 BBC News**
- 11:00 Amanpour and Company**
- 11:00 **WORLD** Local, USA: A Tale of Three Chinatowns

TUESDAY MAY 26

- AM EARLY MORNING**
- mdnt ICT News with Aliyah Chavez
- 12:30 NHK Newsline
- 12:30 **WORLD** Stories from the Stage: Being Asian
- 1:00 Victoria & Albert: The Wedding: Ep: 1
- 1:00 **WORLD** PBS News Hour
- 2:00 Victoria & Albert: The Wedding: Ep: 2
- 2:00 **WORLD** Amanpour and Company
- 3:00 Downton Abbey Season 1 on Masterpiece: Pt 2 → STORY, P. 8
- 3:00 **WORLD** FRONTLINE: Battle for Tibet
- 4:00 **WORLD** BBC News
- 4:30 Rick Steves' Europe: West England
- 4:30 **WORLD** Asia Insight
- 5:00 She Was First: Ruth E. Carter, Costume Designer
- 5:00 **WORLD** Newsroom Tokyo
- 5:28 **WORLD** Direct Talk
- 5:30 Bare Feet with Mickela Mallozzi: Little Caribbean
- 5:43 **WORLD** NHK Short Program

- PM EVENING**
- 5:30 BBC News The Context USA**
- 6:00 PBS News Hour**
- 6:00 **WORLD** Shared Planet: Waters TV-PG
- 7:00 Finding Your Roots** "Dreamers One and All" Henry Louis Gates, Jr. traces the ancestry of actor Sharon Stone & model Chrissy Teigen. TV-PG-L
- 7:00 **WORLD** Human Footprint: The Enemy of My Enemy TV-PG-VD
- 8:00 Seabiscuit: American Experience** A wealthy owner, stubborn trainer and two gifted jockeys turned a racehorse into a national hero. TV-G
- 8:00 **WORLD** PBS News Hour
- 9:00 FRONTLINE** "The War Cabinet"
- 9:00 **WORLD** DW The Day
- 9:30 **WORLD** BBC News
- 10:00 BBC News**
- 10:00 **WORLD** NOVA: When Whales Could Walk TV-PG
- 10:30 Amanpour and Company**
- 11:00 **WORLD** Shared Planet: Waters TV-PG

- 11:30 Roadtrip Nation: Where Wellbeing Grows** TV-G

WEDNESDAY MAY 27

- AM EARLY MORNING**
- mdnt GZERO World with Ian Bremmer
- MDNT **WORLD** Human Footprint: The Enemy of My Enemy
- 12:30 NHK Newsline
- 1:00 Independent Lens: Third Act → STORY, P. 17
- 1:00 **WORLD** PBS News Hour
- 2:00 **WORLD** Amanpour and Company
- 2:30 Cinema Nomad: Bosnia and Herzegovina
- 3:00 **WORLD** Reel South: Drowned Land
- 3:30 Elemental: Reimagine Wildfire
- 4:00 **WORLD** BBC News
- 4:30 **WORLD** GZERO World with Ian Bremmer
- 5:00 Today's Wild West: New Mexico and Arizona Adventures!
- 5:00 **WORLD** Newsroom Tokyo
- 5:28 **WORLD** Direct Talk
- 5:30 **MT** Backroads of Montana: Horsepower & Heat
- 5:43 **WORLD** NHK Short Program

PM EVENING

- 5:30 BBC News The Context USA**
- 5:30 **WORLD** Independent Lens: Third Act TV-14 → STORY, P. 17
- 6:00 PBS News Hour**
- 7:00 Nature** "Attenborough and the Jurassic Sea Monster" Sir David Attenborough and experts unearth the fossil of the largest Jurassic predator ever known. TV-PG-V
- 7:00 **WORLD** FRONTLINE: The War Cabinet
- 8:00 NOVA** "Great Mammoth Mystery" An excavation of a site in southwest England reveals traces of ancient mammoths and Neanderthals. TV-PG
- 8:00 **WORLD** PBS News Hour
- 9:00 Secrets of the Dead** "China's Bronze Kingdom" Explore China's bronze kingdom in the mountains of Sichuan. TV-PG → STORY, P. 21
- 9:00 **WORLD** DW The Day
- 9:30 **WORLD** BBC News
- 10:00 BBC News**
- 10:00 **WORLD** **MT** Montana PBS Reports: IMPACT: The Primary Election/Immigration Enforcement TV-G → STORY, P. 5
- 10:30 Amanpour and Company**
- 10:30 **WORLD** Independent Lens: Third Act TV-14 → STORY, P. 17
- 11:30 MotorWeek** TV-G

THURSDAY MAY 28

- AM EARLY MORNING**
- mdnt Story in the Public Square
- MDNT **WORLD** FRONTLINE: The War Cabinet

CREDIT: WIKIMEDIA COMMONS.
Portrait of W.E.B. Du Bois in bowtie.

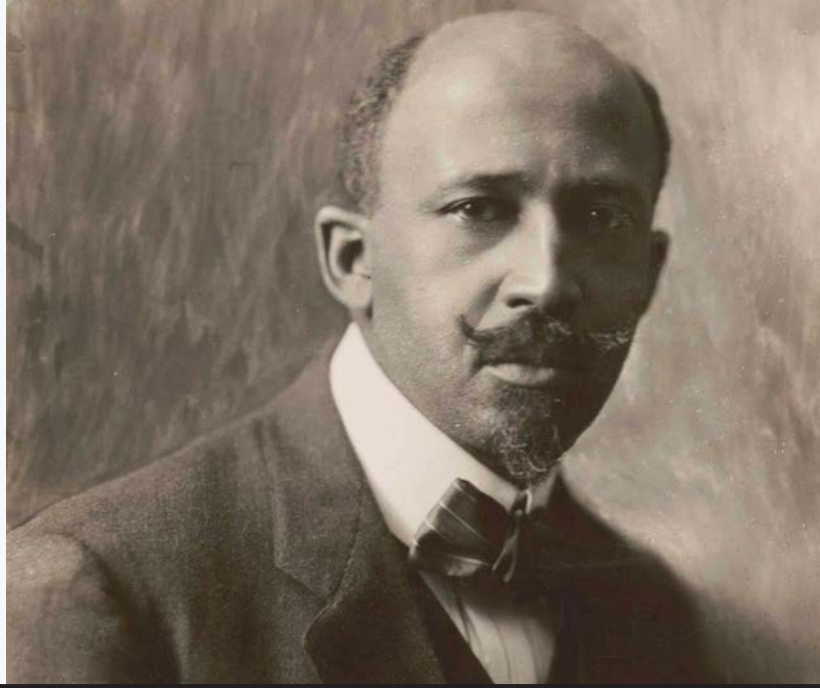
Great U.S. History Story
American Masters

W.E.B. Du Bois: Rebel with a Cause

TUESDAY, 5/19 AT 8PM *WORLD: 5/22 6pm & 11pm; 5/23 7am*

Rebel With A Cause charts this visionary's singular journey by exploring both his monumental achievements and his deeply personal struggles. From the loss of his infant son to his lifelong battles with systemic racism, Du Bois's humanity shaped his activism, enabling him to transcend the social constraints of the early 20th century and elevate the lives of Black people worldwide — inspiring leaders from the Harlem Renaissance to Dr. Martin Luther King Jr.

A rebel against the status quo, Du Bois relentlessly spearheaded the fight for racial justice. He co-founded the NAACP, helped launch the Niagara Movement, challenged contemporaries such as Booker T. Washington and Marcus Garvey, and contributed to the founding of the United Nations.



- 12:30 NHK Newsline
- 1:00 Judy Collins: Wildflowers in Concert
- 1:00 **WORLD** PBS News Hour
- 2:00 Country's Legendary Duets
- 2:00 **WORLD** Amanpour and Company
- 3:00 The Art of Music: Sheryl Crow and Jason Isbell
- 3:00 **WORLD** Asian Americans: Generation Rising
- 4:00 ASD Band: The Movie
- 4:00 **WORLD** BBC News
- 4:30 **WORLD** Story in the Public Square
- 5:00 Antiques Roadshow: Celebrating Asian-Pacific Heritage
- 5:00 **WORLD** Newsroom Tokyo
- 5:28 **WORLD** Direct Talk
- 5:43 **WORLD** NHK Short Program

PM EVENING

- 5:30 BBC News The Context USA**
- 6:00 PBS News Hour**
- 6:30 **WORLD** POV: Between Goodbyes TV-14
- 7:00 MT 11th & Grant with Eric Funk** "Brigid & Johnny Reedy" Brigid & Johnny Reedy perform a timeless mix of Cowboy, Western Swing, and Gypsy Jazz. TV-G → STORY, P. 5
- 8:00 RFDS: Royal Flying Doctor Service** Pete's simmering resentment towards Eliza comes to a head during a tense mid-air birth. TV-14
- 8:00 **WORLD** PBS News Hour
- 9:00 Midsomer Murders** "A Climate of Death" Barnaby and Winter must unravel a murder after a Texas oilman buys a village. TV-PG
- 9:00 **WORLD** DW The Day

- 9:30 **WORLD** BBC News
- 10:00 **WORLD** FRONTLINE: South Korea's Adoption Reckoning
- 10:30 BBC News**
- 11:00 Amanpour and Company**
- 11:30 **WORLD** POV: Between Goodbyes TV-14

FRIDAY MAY 29

- AM EARLY MORNING**
- mdnt Overheard with Evan Smith: Neko Case
- 12:30 NHK Newsline
- 1:00 As Time Goes By : The Miniseries
- 1:00 **WORLD** PBS News Hour
- 1:30 Waiting for God: A Royal Visit?
- 2:00 Great Performances: An Evening with Nicole Scherzinger → STORY, P. 20
- 2:00 **WORLD** Amanpour and Company
- 3:00 **WORLD** American Masters: Ten Times Better
- 3:30 Miles, Morale and Memories: Bob Hope and World War II
- 3:30 **WORLD** Stories from the Stage: Being Asian
- 4:00 **WORLD** BBC News
- 4:30 Railroad Stations in American Life
- 4:30 **WORLD** Balancing Act with John Katko
- 5:00 **WORLD** Newsroom Tokyo
- 5:28 **WORLD** Direct Talk
- 5:43 **WORLD** NHK Short Program

PM EVENING

- 5:30 BBC News The Context USA**
- 6:00 PBS News Hour**
- 6:00 **WORLD** American Experience: Victory in the Pacific TV-PG-V
- 7:00 Washington Week with The Atlantic**
- 7:30 Firing Line with Margaret Hoover**

- 8:00 Great Performances** "Josh Groban: An Evening at the Union Chapel"
- STORY, P. 20

- 8:00 **WORLD** PBS News Hour
- 9:00 **WORLD** Bloomberg Wall Street Week
- 10:00 BBC News**
- 10:00 **WORLD** Seabiscuit: American Experience TV-G

- 10:30 Amanpour and Company**
- 11:00 **WORLD** American Experience: Victory in the Pacific TV-PG-V
- 11:30 Consuelo Mack WealthTrack** TV-G

SATURDAY MAY 30

- AM EARLY MORNING**
- mdnt Clint Eastwood: The Last Legend
- STORY, P. 13
- 1:00 Patience: My Brother's Keeper
- 1:00 **WORLD** PBS News Hour
- 2:00 Towns in Tune: The Music
- 2:00 **WORLD** Amanpour and Company
- 3:00 Washington Week with The Atlantic
- 3:00 **WORLD** Human Footprint: The Enemy of My Enemy
- 3:30 Market to Market
- 4:00 This Old House
- 4:00 **WORLD** The Whitney Reynolds Show
- 4:30 Ask This Old House
- 4:30 **WORLD** Consuelo Mack WealthTrack
- 5:00 Wai Lana Yoga: The Lion
- 5:00 **WORLD** To the Contrary with Bonnie Erbe
- 5:30 Daniel Tiger's Neighborhood
- 5:30 **WORLD** Washington Week with The Atlantic

PM EVENING

- 6:00 The Lawrence Welk Show** "America



PHOTO BY JOAN MARCUS.
Kim Blanck and the company of *SUFFS*.

From Broadway and More Great Performances

FRIDAYS AT 8PM

REPEATS THE FOLLOWING FRIDAY MORNING AT 2AM

Watch television's longest-running performing arts anthology to enjoy the best in music, dance and theater.

Suffs

FRIDAY 5/8 8PM Also 5/15 2am

Witness the American women's suffrage movement in this Tony-winning Broadway musical. Created by Shaina Taub, the cast features Taub as Alice Paul, Tony winner Nikki M. James as Ida B. Wells, and Tony nominee Jenn Colella as Carrie Chapman Catt.

Top Hat

FRIDAY 5/15 8PM Also 5/22 2am

Enjoy this acclaimed musical inspired by the 1935 movie starring Fred Astaire and Ginger Rogers featuring a timeless score by Irving Berlin including classics like "Cheek to Cheek," "Let's Face the Music and Dance" and "Puttin' on the Ritz."

An Evening with Nicole Scherzinger

FRIDAY 5/22 8PM Also 5/29 2am

In 2024, Nicole Scherzinger received international acclaim in London's West End and on Broadway for her riveting star turn in a reimagining of Andrew Lloyd Webber's *Sunset Boulevard*, which garnered Scherzinger both an Olivier and a Tony Award for Best Actress in a Musical.

Josh Groban: An Evening at Union Chapel

FRIDAY 5/29 8PM Also 6/5 2am

Filmed in November 2025, this unforgettable concert film captures a performance by Josh Groban at London's historic Union Chapel. Groban is at the top of his craft as he unveils new songs and unique interpretations of all-time favorites in an intimate, warm setting.

on the Move" This show spotlights the ways we get around with songs about America on the move. TV-G

6:00 **WORLD** Stand Together As One TV-PG

7:00 **As Time Goes By** "A Trip to Los Angeles" Jean and Lionel travel to Los Angeles to discuss turning their story into a film with an executive. TV-PG

7:00 **WORLD** King of Them All: The Story of King Records TV-PG-L

7:30 **Waiting for God** "Diana's Diet" With no sign of improvement to her suppurating foot, Tom presses Diana into a trip to the doctor. The prognosis is not good. Neither is her mood when she is told to adopt a new diet. TV-PG

8:00 **WORLD** A French Village: An Explosion

8:03 **Montana PBS Film Classics** "The Outsiders (1983)" A teen gang in rural Oklahoma is perpetually at odds with a rival group. TV-PG → STORY, P. 11

9:00 **WORLD** Red Storm Rising: The Struggle for the American Communist Party TV-PG

9:35 **MT 11th & Grant with Eric Funk** "Brigid & Johnny Reedy" Brigid & Johnny Reedy perform a timeless mix of Cowboy, Western Swing, and Gypsy Jazz. TV-G → STORY, P. 5

10:00 **WORLD** Stand Together As One TV-PG

10:32 **Austin City Limits** "Brittany Howard" Powerhouse singer-songwriter Brittany Howard dazzles with highlights from her album, "What Now?" TV-PG

11:00 **WORLD** King of Them All: The Story of King Records TV-PG-L

11:30 **TradFest** "a haon" Fiachna celebrates the contribution that the Travelling Community have made to Irish music. TV-G

SUNDAY

MAY 31

AM EARLY MORNING

mdnt Murder in the Mountains: Break it Up

MDNT **WORLD** Local, USA: A Tale of Three Chinatowns

1:00 Midsomer Murders: A Climate of Death

1:30 **WORLD** Stories from the Stage: Being Asian

2:00 **WORLD** POV: Between Goodbyes

2:30 On Story: The Writer Producer Relationship with Christine Vachon

3:00 Iconic America: Our Symbols and Stories with David Rubenstein: The Cowboy

3:30 **WORLD** American Masters: Ten Times Better

4:00 Finding Your Roots: Dreamers One and All

4:00 **WORLD** On Story: Inside the Writers Room: The Studio

4:30 **WORLD** To the Contrary with Bonnie Erbe

5:00 Albie's Elevator

5:00 **WORLD** Washington Week with The Atlantic

5:30 Ready Jet Go!

5:30 **WORLD** The Open Mind

PM AFTERNOON/EVENING

3:00 **WORLD** POV: Between Goodbyes TV-14

3:30 Trolley Park: Great Lakes Learn the rich histories of two surviving trolley parks located on the shores of the Great Lakes. TV-G

4:00 America the Bountiful "Cherries in Michigan" Capri visits the "cherry capital of the world," Traverse City, and its surrounding areas. TV-G

4:30 A Chef's Life "Stop, Squash and Roll" Vivian seeks motherly advice from Mrs. Scarlett and her sister Johnna over Squash and Onions. TV-G

4:30 **WORLD** American Masters: Ten Times Better TV-PG

5:00 Outside: Beyond the Lens "Grasslands" In southeastern Colorado, National Grasslands protect a part of America's heartland frozen in time. TV-G

5:00 **WORLD** A French Village: An Explosion

5:30 Compass Points from PBS News

6:00 MT Montana AG Live "Agri-Tourism Update" This week, we welcome Melissa Weddell, the Director of the Institute for Tourism & Recreation Research at the University of Montana, to learn more about Montana's visitors meeting the real farm & ranch world. TV-G → STORY, P. 14

6:00 **WORLD** Nature: Attenborough and the Jurassic Sea Monster TV-PG-V

7:00 Margaret: The Rebel Princess "Pt One" Discover how Princess Margaret's life and loves redefined society's image of the modern princess. TV-PG

7:00 **WORLD** Finding Your Roots Dreamers One and All TV-PG-L

8:00 Margaret: The Rebel Princess "Pt Two" Peek in on Princess Margaret and Antony Armstrong-Jones at the start of their married life TV-14

8:00 **WORLD** Reel South Discount Funeral/No Se Ve Desde Aca TV-PG

9:00 Downton Abbey Season 1 on Masterpiece "Pt 3" Growing into his role as heir Matthew brings out the bitter rivalry between sisters Mary and Edith. TV-PG → STORY, P. 8

9:00 **WORLD** Asian Americans Breaking Through TV-14-L

10:00 **WORLD** Nature Attenborough and the Jurassic Sea Monster TV-PG-V

10:30 Rick Steves' Europe "Southeast England" Rick travels from Canterbury to Dover and visits the beachy resort of Brighton. TV-G

11:00 To the Ends of the Earth: Avian Chronicles Todd Gustafson takes viewers on a journey for an eye-level view into the lives of birds. TV-PG

11:00 **WORLD** Finding Your Roots Dreamers One and All TV-PG-L

**New Season Begins:
Explore History through Science
Secrets of the Dead**

China's Bronze Kingdom

WEDNESDAY 5/27 9PM Also 6/11pm

A mysterious ancient city lies hidden in the mountains of Sichuan – remnants of a kingdom consigned to oblivion for thousands of years, until the chance discovery of a jade artifact in 1929. More than 10,000 unusual items have been found at the site which experts believe maybe as archaeologically important as the Terracotta Army of Xi'an. Could this be the capital of the ancient Shu kingdom?

CREDIT: IMAGISSIME

Bronze head from Sanxingdui Museum in Chengdu, China.



@create



PHOTO BY JUSTYN AH CHONG. VIA CREATE AND APT ONLINE.
New York fashion week Ola Hou runway with Native Hawaiian fashion designer Sharayah Chun-Lai.

Pacific Heartbeat

SEASON 12 PREMIERES ON CREATE AND PART OF THE CREATE MARATHON, BEGINNING FRIDAY, MAY 15 @ 7PM

This anthology series draws viewers into the heart, mind, and soul of Pacific Island culture.

SEE OTHER MARATHONS AND HIGHLIGHTS LISTED BELOW

CREATE TV Showcase Marathons

Fridays 7pm-mdnt // Saturdays 8am-1pm // Sundays 10am-3pm

- May 1 – 3** **Fiesta with Pati**
- May 8 – 10** **Happy Travels, Rick!**
- May 15 – 17** **Creating in Community:
Asian Pacific American Culture**
- May 22 – 24** **National Barbecue Month (Viewer's Choice)**
- May 29 – 31** **Weekend Projects**

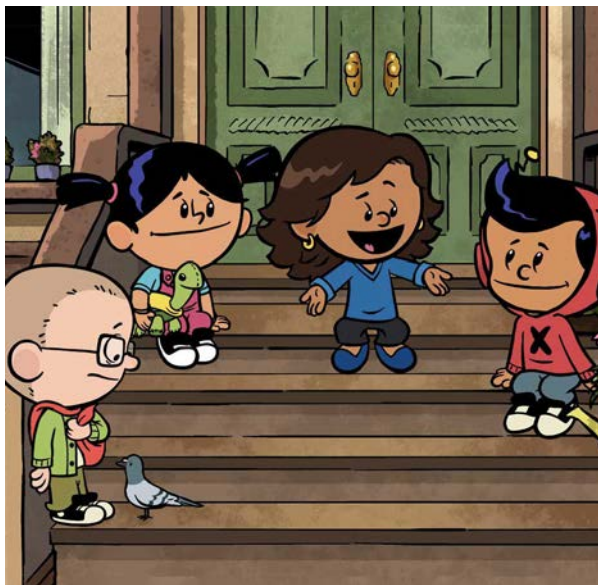
CREATE TV MONTHLY HIGHLIGHTS

- | | | | |
|---------------|------------------------------|---------------|---|
| May 2 | Garden Smart | May 16 | Antiques Roadshow |
| May 7 | Farmer and the Foodie | May 17 | To Dine For
with Kate Sullivan |
| May 15 | Food Roots | May 29 | Lucky Chow |
| May 15 | Pacific Heartbeat | | |



Montana PBS Kids Channel

PBS KIDS and the PBS KIDS Logo are trademarks owned by Public Broadcasting Service. Used with permission.



PBS KIDS, VIA PBS PRESSROOM

Help Kids Find Their Inner Heroes!

Xavier Riddle

WATCH ON MONTANA PBS-KIDS
MON-FRI 2:30PM; SAT & SUN 2:30PM
Also airs on Montana PBS-HD: Mon-Fri 2pm

Xavier Riddle and the Secret Museum follows the adventures of Xavier, Yadina, and Brad as they tackle everyday problems by doing something extraordinary: traveling back in time to learn from real-life inspirational figures when they were kids. *Xavier Riddle* empowers children to dream big and recognize their ability to make a real and meaningful difference in the world.

Parents and Teachers ... Learn more with PBS KIDS online!

Support ongoing growth and learning for Prek-2 children at home and in the classroom with fun, hands-on activities and resources when you visit PBS platforms!

For Parents and Caregivers: <https://www.pbs.org/parents/crafts-and-experiments/encouragement-jar>

For Early Childhood Educators: <https://montana.pbslearningmedia.org/resource/courage-story/life-lessons-xavier-riddle-and-the-secret-museum/>

For Elementary Teachers: <https://montana.pbslearningmedia.org/resource/118fb55b-15d7-454e-8e0c-f41c199be9c7/zora-neale-hurston-media-gallery-xavier-riddle-and-the-secret-museum/>



Come Get a Hug from Daniel Tiger!

Neighbor Day, Montana PBS's annual fun-filled day of learning, is just around the corner! We've partnered with community organizations across Gallatin County to host an event that's perfect for **families with children ages 3-8** in Bozeman. There will be tables and booths full of hands-on educational activities focusing on STEM and literacy, summer resources for parents, and a **Daniel Tiger meet-and-greet!**



PRESENTED BY
Montana PBS

It's a beautiful day in the neighborhood, so please won't you be our neighbor?

Saturday, June 13th, 9am-12pm
Gallatin County Fairgrounds

SPONSORED BY



WWW.MONTANAPBS.ORG A SERVICE OF MONTANA STATE UNIVERSITY AND THE UNIVERSITY OF MONTANA

IS MY GUIDE MISSING PAGES?

Good eye! Yes, starting this month, **we have reduced the guide from 32 to 24 pages and removed the A-Z listings.** We made this change for a few key reasons:

Cost: Monthly costs to design, print and mail the Program Guide are increasing. Fewer pages will help MTPBS manage this expense.

Time: Shifting limited staff time and station resources away from the monthly editing and proofing of the program guide will allow Montana PBS to focus on essential daily broadcast operations as well as local programs and educational content for our viewers.

Program Listings Redesign Coming Soon: Later this year, we'll introduce a redesign of the primary guide listings (pages 7-20) with a sharper look and a more readable primetime schedule.

We understand that some members may be disappointed by these changes. We gave this decision careful consideration and believe it will ultimately help us serve Montanans more effectively with the resources we have available.

A searchable Montana PBS program schedule, covering all five broadcast channels, is always available on our website at <https://www.montanapbs.org/schedule>

Thank you for your understanding.



PHOTO BY ANUSCHKA SCHOFIELD

David Attenborough - Writer & Presenter, *Life on Earth*, 2024.

**Best in the Natural World
with David Attenborough**

Life On Earth: Attenborough's Greatest Adventure

WEDNESDAY, 5/6 7PM Also 5/13 1pm

In 1976, production began on the BBC TV series *Life on Earth*. Fronted by David Attenborough, no one had attempted to create a natural history series on this scale before. The team working on the production travelled to 40 countries, across a million miles, and filmed over 600 species.

Now, the BBC is celebrating Attenborough's 100th birthday (on 8 May) with a special programme reflecting on the milestone series. *Life on Earth: Attenborough's Greatest Adventure* goes behind-the-scenes, featuring exclusive interviews with Attenborough and other members of the original crew. They reveal the highs and lows of filming during an exciting time when global jet travel and colour filming were still in their infancy.