

JULY - AUG. '26

f @ y in d

Pioneer  PBS

PIONEER PREVIEW



PREMIERES AUGUST 6 AT 8 P.M.

Dear Valued Pioneer PBS members,

As we continue celebrating Pioneer PBS's 60th year of service to this region, it is remarkable to think we are also helping commemorate America's 250th birthday. It certainly puts our 60 years into perspective. Can you imagine a television station celebrating 250 years?

We are doing everything we can to ensure Pioneer PBS remains here for future generations—for your children's children! That means continuing to adapt to a changing media landscape while staying true to our mission of telling the stories of this region and making sure local voices are heard far and wide.

Our production teams are once again traveling throughout the area capturing stories that matter. If you see us out in our communities, be sure to say hello. We love hearing from our viewers. You can look forward to several specials this fall along with new seasons of many of your favorite local productions. As always, if you have a story idea to share, we would love to hear from you at yourtv@pioneer.org.

As many of you know, Pioneer PBS is coming through a challenging fiscal year. We lost nearly one-third of our annual budget just one month into the year and lost valuable staff along the way. Thanks to the support of our members and several philanthropic organizations, we have made significant progress in closing that gap. However, as we enter another year without federal funding, we face the challenge of replacing an additional \$1 million in revenue.

Our board of directors and staff are working hard to identify new opportunities and creative solutions. If you know of a business, foundation, or individual who may be interested in supporting public television through sponsorship, we would greatly appreciate the introduction.

Most importantly, thank you. Your support allows us to continue serving this region and sharing its stories. We hope you enjoy your summer, and we look forward to bringing you much more in the months ahead.



Respectfully,

Shari Lamke, President & General Manager

CHANNEL GUIDE

Did you know you can receive Pioneer PBS's six channels for free with a digital TV and an antenna if you are in range of one of our three broadcast towers?

	Pioneer PBS	@create	WORLD	MN channel	PBS HD	FNX
Appleton	10.1	10.2	10.3	10.4	10.5	10.6
Worthington	20.1	20.2	20.3	20.4	20.5	20.6
Fergus Falls	8.1	8.2	8.3	8.4	8.5	8.6
Dish Network	10/20					
DirecTV	10/20					
YouTube TV	•					
Hulu Live TV	•					
Prime Video	•					

YouTube TV, Hulu, and Prime Video are live streaming platforms.



For a complete program lineup for all Pioneer PBS channels, go to pioneer.org/schedule or scan the QR code.

Watch our Live TV Stream at pioneer.org/live

Contact us at 800-726-3178 or e-mail us at yourtv@pioneer.org for more information. For a complete schedule of programming on Pioneer PBS, visit pioneer.org/schedule.

The Pioneer Preview

Managing Editor: Chelsea Lund
800-726-3178 | clund@pioneer.org

Pioneer Preview designer: Chelsea Lund
Impressions by Chelsea

POSTMASTER: Send address changes to
PIONEER PREVIEW
1 Pioneer Dr.
Granite Falls, MN 56241

The Pioneer Preview: July - August 2026: Volume 57, No. 4.
The Pioneer Preview is the official program listing for Pioneer PBS. The Pioneer Preview is published six times yearly by West Central Minnesota Educational Television Company, a nonprofit organization, (ISSN 1081-7298). Its office is located at 1 Pioneer Dr., Granite Falls, MN 56241 800-726-3178.

Printed in the USA. Periodicals Postage Paid Granite Falls, Minnesota, and at additional mailing offices. Subscriptions available only to contributing members.

BOARD OF DIRECTORS

Penny Retzer
Fergus Falls

Vice Chair Gary Bartlett
Parkers Prairie

Secretary-Treasurer LaMont Jacobson
Sacred Heart

Mark Olson, Willmar; Charles Grussing, Alexandria; Rebecca Petersen, Fergus Falls; Jennifer Schmidt, Fergus Falls; Kevin Bienias, Alexandria; Chris Haarstick, Maple Grove; Jeet Sausen, Richfield; Luanne Fondell, Dawson.

Pioneer PBS's Board of Directors meets every other month at Pioneer PBS in Granite Falls, Minn. If you think you or someone you know would be a good addition to the board of directors, send your suggestions for nominations to: The Board of Directors Nominating Committee, Pioneer PBS, 1 Pioneer Dr., Granite Falls, MN 56241.

COMMUNITY ADVISORY BOARD

Mona Gregersen, Starbuck; Aaron Olson, Elbow Lake; Sheila Tabaka, Marshall; Julia K. Dabbs, Morris

The Pioneer PBS Community Advisory Board is a non-voting, non-governing board of community leaders charged with advising the station on whether its programming meets the needs of the region. They interact with staff and offer insight to the challenges and opportunities facing public TV. All meetings are open to the public. If you think you or someone you know would be a good addition to the community advisory board, send your suggestions for nominations to: Community Advisory Board Nominating Committee, Pioneer PBS, 1 Pioneer Dr., Granite Falls, MN 56241.

LEARN MORE ABOUT OUR BOARD OF DIRECTORS AND COMMUNITY ADVISORY BOARD AT PIONEER.ORG/GOVERNANCE.

CONNECT WITH

Pioneer PBS



SUBSCRIBE TO OUR NEWSLETTERS!

pioneer.org/newsletters

Pioneer PBS is committed to safeguarding your privacy. We do not sell, rent or exchange the information you have entrusted to us.

ON THE COVER



AMERICA: MADE IN VIRGINIA 250 YEARS TOGETHER

SATURDAY, JULY 4 AT 7 & 9 P.M.

Celebrate America with this star-filled tribute to America's Semiquincentennial from revolutionary Colonial Williamsburg. Featuring live performance, historic interpretation, large-scale spectacle and fireworks, go back to the place where the path to independence truly began.



MY TOWN

WITH CORY HEPOLA

THURSDAYS BEGINNING AUGUST 6 AT 8 P.M.

In Season 1 of *My Town*, Emmy Award-winning journalist Cory Hepola travels across Minnesota, Iowa, Wisconsin and North Dakota to discover why people choose to live in small towns. Through personal stories, local traditions, and conversations with residents, the series challenges common perceptions of rural America while highlighting the opportunities, innovation, and strong sense of community that make these towns special.

COMING SOON TO PIONEER PBS



RICK STEVES: BEST OF LONDON

Rick Steves explores London's icons, history and diverse culture in this hour-long travel special.

THURSDAY, JULY 9 AT 8 P.M.



ONCE UPON A TIME IN SPACE

This landmark four-part series tells the human stories behind our quest to explore space, offering a unique perspective on our changing world and where we are headed.

TUESDAYS BEGINNING
JULY 14 AT 8 P.M.



DR. NELLIE BARSNESS: MINNESOTA'S MEDICAL PIONEER

When women were barred from military service during World War I, Minnesota physician Dr. Nellie Barsness joined the French Army, providing care to thousands. Discover the remarkable story of this pioneering doctor and trailblazing humanitarian.

SUNDAY, AUG. 9 AT 3:30 P.M.



AMERICAN MASTERS MARY OLIVER SAVED BY THE BEAUTY OF THE WORLD

Celebrate the life and career of Pulitzer Prize-winning writer Mary Oliver. Oliver published more than 30 collections of poetry and essays on nature, beauty and love.

TUESDAY, AUG. 25 AT 8 P.M.



SMALL TOWNS. BIG IMPACT.

HOW CORY HEPOLA'S MY TOWN IS CHANGING THE NARRATIVE AROUND RURAL AMERICA

After a successful career in television news, Cory Hepola returned to his roots to create *My Town*, a series that explores the people, places and stories that make small-town America unique. Growing up in Perham, Minnesota, Hepola developed a deep appreciation for rural communities. Today, he travels the country highlighting the innovation, pride and quality of life found in towns that are often overlooked or misunderstood.

What inspired you to create *My Town*, and why did you feel these stories needed to be told?

Our small towns have something a lot of people are searching for: quality of life. But for years, there have been stereotypes attached to rural communities that keep people from seeing the full picture.

I felt there was a disconnect between how small towns are often portrayed and what I knew growing up. With *My Town*, we wanted to show the reality by spending time with the people who choose to live, work and build their lives in these communities. When you meet those people and hear their stories, a lot of assumptions begin to fall away.

Growing up in Perham, Minnesota, did you ever imagine your career would bring you back to telling small-town stories?

Not at all. I knew what I wanted to do when I was eight years old. I told my parents I was going to be a TV news anchor in Minneapolis, and somehow I ended up following that path through small markets across the country before eventually landing at KARE 11.

I thought I'd do that for the rest of my life. But a couple things shifted for me. My wife and I had three kids in a 17-month span, and suddenly my perspective changed. I started seeing my hometown—and communities like it—through a different lens. At the same time, working in a larger market, I would hear assumptions about rural communities that didn't match my own experience. I felt a pull to help communities tell their authentic story.

How is *My Town* different from the stories you told as a news anchor?

My Town is very different because we're not showing up for a day - we're spending months learning. We research communities, meet with local leaders and try to understand what makes a place unique before we ever start filming. Traditional television news is

built around what's happening today, and often the stories that travel the farthest are the difficult ones. Small communities can sometimes become known for a single event that doesn't represent who they really are. *My Town* gives us the opportunity to slow down and tell a broader story.

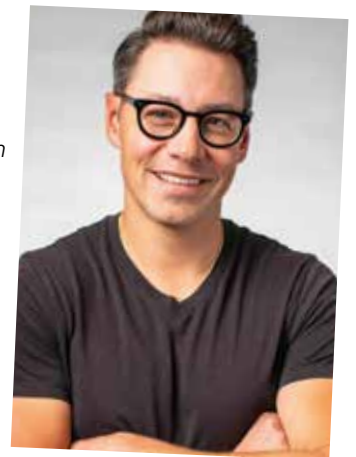
The series focuses on people who choose to live in rural communities. Why was that important to you?

One thing I noticed is that small-town life is rarely portrayed as a choice. In movies and television, the story is often someone returning home because things didn't work out somewhere else. But that hasn't been my experience at all.

We meet people across the country who could live anywhere, and they intentionally choose these communities because they want a certain lifestyle, want to raise their families there, or want to make a difference. There's something powerful about that.

After visiting so many towns, what common traits have you found in communities that are thriving?

This might sound simple, but the communities that seem to thrive are unified. I've seen communities miss opportunities because organizations and leaders are working independently instead of together. The places that are growing tend to have people who are energized about their future and willing to partner across businesses, organizations and community groups. Nobody succeeds alone.



What are some of the biggest misconceptions about small-town or rural life that the series has challenged?

There are a lot of misconceptions—that small towns are disappearing, that you can't pursue big dreams there or that innovation only happens in larger cities.

One of the most surprising things we've seen is the amount of innovation happening in these communities. We meet entrepreneurs, researchers, manufacturers and business leaders doing incredible work every day. Science, technology and big ideas exist everywhere.

Was there a particular town, story, or conversation that changed your perspective in a meaningful way?

The best part of *My Town* is that every community teaches me something I didn't know before. That's one of my favorite parts of the process. We walk into places thinking we're there to tell a story, and I usually leave realizing I learned just as much as anyone watching the episode.

What do you hope viewers take away after watching an episode of *My Town*?

Whether someone lives in a small town, a large city or somewhere in between, I hope they walk away seeing people and communities with a little more understanding and appreciation.

My daily prayer for "My Town" is pretty simple: that it inspires curiosity, challenges assumptions and creates a sense of pride.

Tune in for *My Town* on Pioneer PBS Thursdays beginning August 6 at 8 p.m.



SMALLTOWN RURAL HEALTH

FACING THE REALITY OF RURAL HEALTHCARE

Pioneer PBS is developing a new documentary initiative focused on one of the most pressing issues facing rural communities today: access to healthcare. Through a series of planned documentaries, Pioneer PBS hopes to highlight the challenges facing rural hospitals and healthcare workers, while sharing the stories of the people on the front lines of patient care.

These are stories of the men and women in rural medicine that not only deserve to be told, but need to be shared.

"I am so grateful to all our healthcare workers and wanted to help share their stories and bring light to their experiences. They dedicate their lives to helping others, often putting their own mental and physical health aside," said creator/producer Mickey Reed.

Trauma Response & Resources in Rural America

This documentary explores how rural hospitals and emergency responders provide lifesaving care despite limited resources. Staffing shortages, funding challenges, limited access to the latest equipment and training and hospital closures continue to strain rural healthcare systems.

Trauma-related mortality rates are higher in rural communities than in urban areas, and patients often face longer transport times and fewer care options. The issue is expected to become even more pressing in the years ahead. The film will examine how these challenges affect patients, providers and communities, while highlighting the unique realities of trauma care in rural America.

Nursing in Rural America

Nurses are the backbone of healthcare, yet their experiences—especially in rural communities—often go unnoticed. This documentary will examine the realities of rural nursing, including burnout, workforce shortages and limited resources.

Only about 16% of registered nurses work in rural areas, even as healthcare needs continue to grow. The film will explore how rural nurses meet increasing demands while working in an already strained healthcare system.

Nursing & PTSD

This documentary will give nurses a platform to share their experiences and raise awareness about the mental and emotional challenges they face. Nurses are often present during life's most difficult moments, and many carry the effects of those experiences long after their shifts end.

With more than five-million registered nurses nationwide, nursing is the largest healthcare profession in the United States. Research shows PTSD affects nurses at significantly higher rates than the general population, particularly those working in high-pressure environments. Through personal stories, the film will explore these challenges to foster greater understanding of the mental, emotional and physical challenges while highlighting the critical role nurses play in patient care.

"When I first started in documentary film making, healthcare was one of the topics I was most interested in. Then, with Pioneer PBS's strong focus on the rural experience, I saw stories that needed to be told that are unique to the community we serve," said Reed.

JULY

WEDNESDAY, JULY 1

- 7:00 p.m.** **NOVA Athens: Birth of Democracy** TVPG Archaeologists investigate the dramatic origins of democracy in ancient Greece 2,500 years ago.
- 8:00 p.m.** **NOVA Revolutionary War Weapons** TVPG Get a look into the hidden history of the Revolutionary War.
- 9:00 p.m.** **The Kimberley: Australia's Wild West** *Into The Fire* TVPG
- 10:00 p.m.** **To The Contrary with Bonnie Erbe** TVRE
- 10:30 p.m.** BBC News TVRE
- 11:00 p.m.** Amanpour and Company TVRE

THURSDAY, JULY 2

- 7:00 p.m.** **Postcards** *Foxhole Brewhouse, Smilin' D Arena, Streets of Honor* Foxhole Brewhouse brings award-winning brews and unique menu items to the table in Willmar. In Belgrade, Smilin' D Arena showcases a big time rodeo experience in a rural setting. Appleton honors the town's fallen veterans with a new public art installation.
- 7:30 p.m.** **Prairie Yard & Garden** *Flower Power - Fertile* Owner Joe Bergeson joins host Mary Holm at Bergeson Nursery near Fertile to explore their stunning display beds of blooming annuals and practical tips for gardeners looking to maximize color and annuals in their own yards.
- 8:00 p.m.** **The Buskers New York** Celebrate street performers and the stories behind their checkered careers.
- 9:00 p.m.** **Hometowns** *Benezette, Pennsylvania* Nestled in the heart of the Pennsylvania Wilds, Benezette is a small town known for its wild elk.
- 9:30 p.m.** **Austin City Limits** *Juanes* TVPG
- 10:30 p.m.** BBC News TVRE
- 11:00 p.m.** Amanpour and Company TVRE

FRIDAY, JULY 3

- 7:00 p.m.** **Washington Week with The Atlantic** TVRE
- 7:30 p.m.** **Firing Line with Margaret Hoover** TVRE
- 8:00 p.m.** **Ag PhD** Hosted by Brian and Darren Hefty each week, they bring new information covering a variety of topics focused on improving crop health throughout the season, while protecting the environment and producing more yields cost-effectively.
- 8:30 p.m.** **Market to Market**
- 9:00 p.m.** **The American Revolution** *In Order to Be Free* TV14 Political protest escalates into violence. War gives thirteen colonies a common cause.
- 11:00 p.m.** Amanpour and Company TVRE

SATURDAY, JULY 4

- 6:00 p.m.** Classic Gospel *Hallelujah Homecoming*
- 7:00 p.m.** **America Made in Virginia: 250 Years Together** TVPG Colonial Williamsburg's 250th gala features stars, music, and drones to honor America's journey.
- 9:00 p.m.** **America Made in Virginia: 250 Years Together** TVPG
- 11:00 p.m.** **Austin City Limits** TVPG

SUNDAY, JULY 5

- 6:00 p.m.** **Antiques Roadshow** *250 Years of Americana* ROADSHOW discoveries reflect 250 years of American art, artifacts, crafts & collectibles.
- 7:00 p.m.** **Postcards** *Foxhole Brewhouse, Smilin' D Arena, Streets of Honor*
- 7:30 p.m.** **Prairie Sportsman** *Heart For the Hunt and Conservation's North Star* Host Bret Amundson accompanies heart transplant recipient Mark Lehman on his first pheasant hunt since surgery, and the Nongame Wildlife Program of the Minnesota DNR approaches 50 years of preserving the state's wildlife.
- 8:00 p.m.** **Patience** *The Timetable* TV14 After witnessing her father's murder, an autistic girl leads Patience to the truth.
- 9:00 p.m.** **Grantchester on Masterpiece** *Season 11, Episode 4* TV14 A trip to reconcile with his mother turns deadly, leaving Alphy as the prime suspect.
- 10:00 p.m.** **Downton Abbey** *Season 2 on Masterpiece Part Four* TVPG In the climactic battle of the war, Matthew and William go over the top to an uncertain fate.
- 11:00 p.m.** Rick Steves Best of Paris

MONDAY, JULY 6

- 7:00 p.m.** **Antiques Roadshow** *Springs Preserve, Hour 3* ROADSHOW heads to the Mojave Desert in search of marvels at Springs Preserve in Las Vegas.
- 8:00 p.m.** **Antiques Roadshow** *Living History Farms, Hour 1* ROADSHOW visits Living History Farms for treasures and a top \$75,000 to \$125,000 find.

- 9:00 p.m.** **Independent Lens** *True North: Canadian Myths and Black Power* TV14 True North revisits 1968 Montreal for the Black liberation movements through archival footage.
- 10:30 p.m.** BBC News TVRE
- 11:00 p.m.** Amanpour and Company TVRE

TUESDAY, JULY 7

- 7:00 p.m.** **Finding Your Roots** *Family: Lost and Found* TVPG DNA is used to solve mysteries for actor Joe Manganiello and football star Tony Gonzalez.
- 8:00 p.m.** **Breaking the Deadlock** TVPG
- 9:00 p.m.** **8 Days: to the Moon and Back** TVPG The first moon landing is recreated with mission audio, astronaut conversations, footage and CGI.
- 10:30 p.m.** BBC News TVRE
- 11:00 p.m.** Amanpour and Company TVRE

WEDNESDAY, JULY 8

- 7:00 p.m.** **Nature** *Niagara Falls*
- 8:00 p.m.** **NOVA** *Black Hole Apocalypse* Join astrophysicist Janna Levin on a mind-blowing voyage to the frontiers of black hole science.
- 9:00 p.m.** **The American Southwest** TVPG A wildlife movie that journeys down the Colorado River.
- 10:00 p.m.** **To the Contrary with Bonnie Erbe** TVRE
- 10:30 p.m.** BBC News TVRE
- 11:00 p.m.** Amanpour and Company TVRE

THURSDAY, JULY 9

- 7:00 p.m.** **Postcards** *Learn to Ski, Dani Prados, Puppet Parade* In New London, the Learn to Ski program introduces children to the sport of water skiing. Granite Falls artist Dani Prados works with resin casting and other mediums, and in New London the Puppet Parade brings the community together with an autumnal celebration.
- 7:30 p.m.** **Prairie Yard & Garden** *Pruning Hydrangea - Chaska* Host Mary Holm visits Audrey Busch at the Minnesota Landscape Arboretum, where Audrey oversees hundreds of hydrangeas and demonstrates how and when to prune these popular shrubs to ensure maximum flower power in your own garden.
- 8:00 p.m.** **Rick Steves Best of London** TVPG Rick Steves explores London's icons, history and diverse culture in this hour-long travel special.
- 9:00 p.m.** **Hometowns** *Bristol, Tennessee/Virginia* Discover Bristol, a vibrant community that embraces its Appalachian roots.
- 9:30 p.m.** **Austin City Limits** *The Avett Brothers* TVPG
- 10:30 p.m.** BBC News TVRE
- 11:00 p.m.** Amanpour and Company TVRE

FRIDAY, JULY 10

- 7:00 p.m.** **Washington Week with The Atlantic** TVRE
- 7:30 p.m.** **Firing Line with Margaret Hoover** TVRE
- 8:00 p.m.** **Ag PhD**
- 8:30 p.m.** **Market to Market**
- 9:00 p.m.** **JFK: American Experience** *Part One* TVPG John F. Kennedy's rise to power, from his birth to his election as president in 1960, is examined.
- 11:00 p.m.** Amanpour and Company TVRE

SATURDAY, JULY 11

- 6:00 p.m.** Classic Gospel *Joseph Habedank*
- 7:00 p.m.** **Curious Traveler** *Curious Polish Palaces & Castles* Explore Poland's rich history through three very different castles.
- 7:30 p.m.** **Prairie Sportsman** *Heart For the Hunt and Conservation's North Star*
- 8:00 p.m.** **Hiseerie** *Malvern Manor: Part 1* In this two-part season finale, travel to Malvern Manor in Malvern, Iowa, for a 48-hour lock-in as we speak with the owner, Josh Heard, to learn about the history of the property. We also experimented with new tech with paranormal equipment inventor Paul Kocsis and were joined one night by friends of the show from Farrar Elementary School.
- 8:30 p.m.** **Radio Bristol's Farm and Fun Time** *Viv and Riley, S.G. Goodman*
- 9:30 p.m.** **Grantchester On Masterpiece** *Season 10, Episode 4* TV14 Alphy and Geordie investigate witchcraft at an orphanage.
- 10:30 p.m.** Ireland in Music
- 11:00 p.m.** Austin City Limits TVPG

SUNDAY, JULY 12

- 6:00 p.m.** **Antiques Roadshow** *Springs Preserve Hour 3*
- 7:00 p.m.** **Postcards** *Learn to Ski, Dani Prados, Puppet Parade*
- 7:30 p.m.** **Prairie Sportsman** *St. Croix Sturgeon and Aquatic Plant Restoration* Host Bret Amundson joins anglers on the St. Croix River to fish for sturgeon, one of the oldest fish species in existence, and the Minnesota Aquatic Invasive Species Research Center pioneers new methods of restoring native aquatic plants in the state's lakes.
- 8:00 p.m.** **Patience** *The Runes* TV14 Patience races to solve the murder of a Viking expert, and her relationship is in crisis.
- 9:00 p.m.** **Grantchester on Masterpiece** *Season 11, Episode 5* TV14 Church corruption shakes Alphy's faith while Georgie's promotion strains his marriage.
- 10:00 p.m.** **Downton Abbey Season 2 on Masterpiece** *Part Five* TVPG As the war nears its end, Downton's aristocrats and servants put their lives back together.
- 11:00 p.m.** Rick Steves Best of London TVPG

MONDAY, JULY 13

- 7:00 p.m.** **Antiques Roadshow** *Living History Farms, Hour 2* Watch remarkable finds from ROADSHOW's stop in Iowa including a \$70,000 to \$90,000 item!
- 8:00 p.m.** **Antiques Roadshow** *Living History Farms, Hour 3* Luminous treasures are unveiled at Living History Farms. One is \$50,000 to \$70,000!
- 9:00 p.m.** **Independent Lens** *Flood* TVPG A filmmaker and her estranged father work to try to reconnect.
- 10:30 p.m.** BBC News TVRE
- 11:00 p.m.** Amanpour and Company TVRE

TUESDAY, JULY 14

- 7:00 p.m.** **Finding Your Roots** *Out of the Past* TVPG From the American Revolution to the Mayflower, Henry Louis Gates uncovers the roots of two actors.
- 8:00 p.m.** **Once Upon a Time in Space** *America First* TV14 A pioneering class of astronauts is recruited by NASA to fly aboard its new space shuttle.
- 9:00 p.m.** **Breakthrough: The Ideas That Changed the World** *The Airplane* TVPG Take to the sky with the dreamers whose work gave humans the ability to fly.
- 10:00 p.m.** **Firing Line with Margaret Hoover** TVRE
- 10:30 p.m.** BBC News TVRE
- 11:00 p.m.** Amanpour and Company TVRE

WEDNESDAY, JULY 15

- 7:00 p.m.** **Nature** *Soul of the Ocean* TVPG Experience the soul of the ocean in a never-before-seen look at how life underwater co-exists.
- 8:00 p.m.** **NOVA** *Black Hole Universe*
- 9:00 p.m.** **Bugs That Rule the World** *Insect Apocalypse* TVPG Scientists and enthusiasts investigate the global insect "apocalypse."
- 10:00 p.m.** **To the Contrary with Bonnie Erbe** TVRE
- 10:30 p.m.** BBC News TVRE
- 11:00 p.m.** Amanpour and Company TVRE

THURSDAY, JULY 16

- 7:00 p.m.** **Postcards** *Pen House Boba and Mike Gill* Pen House Boba in Willmar serves trendy and tasty milk teas, fruit teas, and slushies, and, in Granite Falls, musician Mike Gill shares his journey as a musician and how music has shaped his life.
- 7:30 p.m.** **Prairie Yard & Garden** *Bee's Books and Blooms - Grand Forks* Inspired by her mother's love of books and blooms, Mary Morken and her husband Allan cultivate a vibrant community garden featuring vibrant flowers, fresh vegetables and a delightful Little Free Library.
- 8:00 p.m.** **America in Song: A Concordia Celebration** This sweeping musical event explores the melodies that have shaped the nation's story.
- 9:00 p.m.** **Hometowns** *The Coalfields* Explore Virginia's Buchanan and Dickenson Counties, where the past meets the present.
- 9:30 p.m.** **Austin City Limits** *Samara Joy* TVPG
- 10:30 p.m.** BBC News TVRE
- 11:00 p.m.** Amanpour and Company TVRE

FRIDAY, JULY 17

- 7:00 p.m.** **Washington Week with The Atlantic** TVRE
- 7:30 p.m.** **Firing Line with Margaret Hoover** TVRE
- 8:00 p.m.** **Ag PhD**

8:30 p.m. Market to Market

- 9:00 p.m.** **JFK: American Experience** *Part Two* TVPG John F. Kennedy's successes and failures in the White House and his assassination are explored.
- 11:00 p.m.** Amanpour and Company TVRE

SATURDAY, JULY 18

- 6:00 p.m.** Classic Gospel *Collingsworth Family: Classics and Hymns*
- 7:00 p.m.** **Curious Traveler** *Curious Polish Christmas* Discover the magical Christmas traditions of Poland in its most beautiful cities.
- 7:30 p.m.** **Prairie Sportsman** *St. Croix Sturgeon and Aquatic Plant Restoration*
- 8:00 p.m.** **Hiseerie** *Malvern Manor: Part 2* In this two-part season finale, Hiseerie travels to Malvern Manor for a 48-hour lock-in, exploring its history, paranormal technology and unexplained activity.
- 8:30 p.m.** **Radio Bristol's Farm and Fun Time** *Palmyra, Kelsey Waldon, TK & the Holy Know-Nothings*
- 9:30 p.m.** **Grantchester On Masterpiece** *Season 10, Episode 5* TV14
- 10:30 p.m.** Ireland in Music
- 11:00 p.m.** Austin City Limits TVPG

SUNDAY, JULY 19

- 6:00 p.m.** **Antiques Roadshow** *Living History Farms, Hour 2*
- 7:00 p.m.** **Postcards** *Pen House Boba and Mike Gill*
- 7:30 p.m.** **Prairie Sportsman** *Adopt a Drain and Aquatic Invasive Species Detectors* Host Bret Amundson learns about one community's efforts to protect water quality through an adopt-a-drain program, and citizen volunteers help fight against aquatic invasive species in Minnesota's waters through the AIS Detectors Initiative.
- 8:00 p.m.** **Patience** *Paco's Revenge* TV14 Patience suspects foul play and falls out with Frankie who needs convincing.
- 9:00 p.m.** **Grantchester on Masterpiece** *Season 11, Episode 6* TV14 Cathy's triumph at CeCe's turns dark when a club manager is found dead.
- 10:00 p.m.** **Downton Abbey Season 2 on Masterpiece** *Part Six* TVPG The Spanish flu strikes Downton. Mary, Sybil and Robert each confront a moment of truth.

MONDAY, JULY 20

- 7:00 p.m.** **Antiques Roadshow** *Denver Botanic Gardens Chatfield Farms, Hour 1* Discover delightful ROADSHOW treasures at Denver Botanic Gardens Chatfield Farms!
- 8:00 p.m.** **Antiques Roadshow** *Denver Botanic Gardens Chatfield Farms, Hour 2* ROADSHOW strikes gold in Colorado with amazing finds from a stop in Littleton!
- 9:00 p.m.** **POV** *The Dating Game* TV14 Three bachelors tackle a dating coach's camp to find confidence and bridge their authentic selves.
- 10:30 p.m.** BBC News TVRE
- 11:00 p.m.** Amanpour and Company TVRE

TUESDAY, JULY 21

- 7:00 p.m.** **Finding Your Roots** *Caribbean Roots* TVPG Henry Louis Gates Jr. explores the Caribbean heritage of actor Liza Colon-Zayas.
- 8:00 p.m.** **Once Upon a Time in Space** *The Russian Thing* TVPG When the Soviet Union falls, Russia welcomes U.S. astronauts to their space station Mir.
- 9:00 p.m.** **Breakthrough: The Ideas That Changed the World** *The Telescope* TVPG Meet the brilliant minds from Galileo to Edwin Hubble responsible for creating the telescope.
- 10:00 p.m.** **Firing Line with Margaret Hoover** TVRE
- 10:30 p.m.** BBC News TVRE
- 11:00 p.m.** Amanpour and Company TVRE

WEDNESDAY, JULY 22

- 7:00 p.m.** **Nature** *Big Little Journeys: Home* TVPG A baby turtle in Canada and a young bushbaby in South Africa search for a safe new home.
- 8:00 p.m.** **NOVA** *Chasing Pluto* The New Horizons spacecraft will fly by and take the very first detailed images of Pluto.
- 9:00 p.m.** **Bugs That Rule the World** *Lifegivers* TVPG Dive into the colorful world of Earth's essential pollinators - bees, moths and butterflies.
- 10:00 p.m.** **To The Contrary with Bonnie Erbe** TVRE
- 10:30 p.m.** BBC News TVRE
- 11:00 p.m.** Amanpour and Company TVRE

JULY

THURSDAY, JULY 23

- 7:00 p.m.** **Postcards** *Sara Pajunen and From Nesna with Love Behind the Scenes* Minnesota-based composer, improviser, and performer Sara Pajunen draws upon her Finnish heritage and Mesabi Iron Range upbringing to inspire her work. *Postcards* gives a behind-the-scenes look at the Pioneer PBS documentary "From Nesna with Love."
- 7:30 p.m.** **Prairie Yard & Garden** *What is an Arborist - Ottertail* With insects, diseases and weather stressing our trees, host Mary Holm visits Evan Amundson, arborist and COO of Carr's Tree Service, to learn who to call for expert help.
- 8:00 p.m.** **Unveiled: Daisy Bates and Johnny Cash** TVPG Learn about two new statues in Arkansas that celebrate the enduring legacies of two iconic figures.
- 9:00 p.m.** **Hometowns** *Lewisburg, West Virginia* Step into Lewisburg, West Virginia, where history, culture and adventure seamlessly blend.
- 9:30 p.m.** **Austin City Limits** *ACL Celebrates Antone's & The Blues* TVPG
10:30 p.m. BBC News TVRE
11:00 p.m. Amanpour and Company TVRE

FRIDAY, JULY 24

- 7:00 p.m.** **Washington Week with The Atlantic** TVRE
7:30 p.m. **Firing Line with Margaret Hoover** TVRE
8:00 p.m. **Ag PhD**
8:30 p.m. **Market to Market**
9:00 p.m. **Chasing the Moon: American Experience** TVPG The early days of the space race and the struggle to catch up with the Soviet Union are explored.
11:00 p.m. Amanpour and Company TVRE

SATURDAY, JULY 25

- 6:00 p.m.** Classic Gospel *Heavenly Love - A Southern Convention Sing-Along*
- 7:00 p.m.** **Les Stroud's Survivorman** *Canadian Boreal Forest, Part 1* TVPG Les Stroud heads to the Boreal Forest of Northern Canada.
- 7:30 p.m.** **Prairie Sportsman** *Adopt a Drain and Aquatic Invasive Species Detectors*
- 8:00 p.m.** **Hiseerie** *The Villisca Axe Murder House, Part 1* This season we start out with a two-parter, investigating one of the most infamous, haunted and true crime locations in the world—The Villisca Axe Murder House.
- 8:30 p.m.** **Radio Bristol's Farm and Fun Time** *Rob Ickes & Trey Hensley, Rodney Crowell*
- 9:30 p.m.** **Grantchester on Masterpiece** *Season 10, Episode 6* TV14 Alphy and Geordie investigate the murder of a rock band member.
10:30 p.m. Ireland in Music
11:00 p.m. Austin City Limits TVPG

SUNDAY, JULY 26

- 6:00 p.m.** **Antiques Roadshow** *Denver Botanic Gardens Chatfield Farms, Hour 1*
- 7:00 p.m.** **Postcards** *Sara Pajunen and From Nesna with Love Behind the Scenes*
- 7:30 p.m.** **Prairie Sportsman** *Memorial Park and Powerboat Impacts* Host Bret Amundson visits Shakopee's Memorial Park Mill Pond, a hot spot for waterfowl viewing, and researchers at the St. Anthony Falls Laboratory examine the impacts of powerboats on the lakes of the Upper Midwest.
- 8:00 p.m.** **Patience** *A Monk's Tale* TV14 A monk is found dead in a chapel. Patience uncovers unholy secrets in the monastery.
- 9:00 p.m.** **Grantchester on Masterpiece** *Season 11, Episode 7* TV14 As Alphy seeks redemption, a murder investigation spirals into a high-stakes siege.
- 10:00 p.m.** **Downton Abbey Season 2 on Masterpiece** *Part Seven* TVPG In the finale, the family gathers at Downton Abbey for Christmas.

MONDAY, JULY 27

- 7:00 p.m.** **Antiques Roadshow** *Denver Botanic Gardens Chatfield Farms, Hour 3* ROADSHOW visits Denver Botanic Gardens Chatfield Farms discovering a \$400,000 treasure!
- 8:00 p.m.** **Antiques Roadshow** *Maryland Zoo, Hour 1* Watch astonishing treasures from ROADSHOW's Baltimore stop! One is \$350,000 - \$570,000!
- 9:00 p.m.** **POV** *For Venida, For Kalief* TV14 Venida Browder's transcending poetry weaves a cinematic legacy for her son, Kalief.
10:30 p.m. BBC News TVRE
11:00 p.m. Amanpour and Company TVRE

TUESDAY, JULY 28

- 7:00 p.m.** **Finding Your Roots** *The Road We Took* TVPG Henry Louis Gates Jr. maps the roots of actor Lizzie Caplan and comedian Hasan Minhaj.
- 8:00 p.m.** **Once Upon a Time in Space** *Politics Always Wins* TVPG The arrival of the International Space Station promises a new era of cooperation in space.
- 9:00 p.m.** **Breakthrough: The Ideas That Changed the World** *The Robot* TVPG Discover how robots were first conceptualized in ancient Rome and learn how their use has evolved.
- 10:00 p.m.** **Firing Line with Margaret Hoover** TVRE
10:30 p.m. BBC News TVRE
11:00 p.m. Amanpour and Company TVRE

WEDNESDAY, JULY 29

- 7:00 p.m.** **Nature** *Big Little Journeys: Survival* TV14 A Taiwanese pangolin and a Brazilian lion tamarin family travel to a strange new world.
- 8:00 p.m.** **NOVA** *Pluto and Beyond* The New Horizons spacecraft attempts to fly by Ultima Thule, an object four billion miles from Earth.
- 9:00 p.m.** **Bugs That Rule the World** *Eat or Be Eaten* TVPG Uncover the ruthless world of some of the stealthiest and cleverest insects in the animal kingdom.
- 10:00 p.m.** **To the Contrary with Bonnie Erbe** TVRE
10:30 p.m. BBC News TVRE
11:00 p.m. Amanpour and Company TVRE

THURSDAY, JULY 30

- 7:00 p.m.** **Postcards** *Little Crow Water Ski Team, Mother's Cupboard, Mario Callens* Veteran members of the Little Crow Ski Team share stories about their show ski experiences. Mother's Cupboard in downtown New London offers restorative foods, teas, juices, and elixirs. On a farm near Minnesota, musician Mario Callens creates his own brand of outlaw country.
- 7:30 p.m.** **Prairie Yard & Garden** *Pollinator Pathways - Dawson/Boyd* Rhyann Schicker and her team advocate for monarchs and vital pollinators by leading a movement to strategically plant native gardens in the Dawson and Boyd areas.
- 8:00 p.m.** **Flying Tails** Follow husband and wife team as they travel California to rescue wild and domestic animals.
- 8:30 p.m.** **The Devil's Instrument** The history, lore, craft and haunting music of the eight-string Hardanger fiddle are explored.
- 9:00 p.m.** **Hometowns** *Cody, Wyoming* Discover Cody, Wyoming, the gateway to Yellowstone.
- 9:30 p.m.** **Austin City Limits** *Charley Crockett/Waxahatchee* TVPG ACL showcases Grammy-nominated roots sensations Charley Crockett and Waxahatchee in a radiant hour.
10:30 p.m. BBC News TVRE
11:00 p.m. Amanpour and Company TVRE

FRIDAY, JULY 31

- 7:00 p.m.** **Washington Week with The Atlantic** TVRE
7:30 p.m. **Firing Line with Margaret Hoover** TVRE
8:00 p.m. **Ag PhD**
8:30 p.m. **Market to Market**
9:00 p.m. **Chasing the Moon: American Experience** TVPG Discover what it took for the United States to beat the Soviet Union to the moon in the space race.
11:00 p.m. Amanpour and Company TVRE

SATURDAY, AUG. 1

- 6:00 p.m.** Classic Gospel *The Oak Ridge Boys: Rock of Ages*
- 7:00 p.m.** **Les Stroud's Survivorman** *Canadian Boreal Forest Part 2* TVPG Les Stroud explores the Boreal Forest of Northern Canada and its vast wilderness.
- 7:30 p.m.** **Prairie Sportsman** *Memorial Park and Powerboat Impacts* (see 07/26 at 7:30 p.m.)
- 8:00 p.m.** **Hiseerie** *The Villisca Axe Murder House, Part 2* Continue our investigation into the Villisca Axe Murder House upstairs and debrief on our experiences at Villisca.
- 8:30 p.m.** **Radio Bristol's Farm and Fun Time** *Resonate Rouges, Boy Golden*
- 9:30 p.m.** **Grantchester on Masterpiece** *Season 10, Episode 7* TV14 Geordie secretly intervenes in Alphy's personal life.
10:30 p.m. Ireland in Music
11:00 p.m. Austin City Limits TVPG

SUNDAY, AUG. 2

- 6:00 p.m. Antiques Roadshow** *Denver Botanic Gardens Chatfield Farms, Hour 3*
- 7:00 p.m. Postcards** *Little Crow Water Ski Team, Mother's Cupboard, Mario Callens*
- 7:30 p.m. Prairie Sportsman** *Hen Houses and Insect Surveys* Host Bret Amundson connects with Delta Waterfowl to learn the value of hen houses to duck populations. Surveys by the University of Minnesota department of entomology track the numbers and varieties of harmful ticks and helpful bumblebees.
- 8:00 p.m. Patience** *Hostage* TV14 Patience faces challenges in love and loss.
- 9:00 p.m. Grantchester on Masterpiece** *Season 11, Episode 8* TV14
- 10:00 p.m. Downton Abbey Season 3 on Masterpiece** *Part One* TVPG Wedding guests descend on Downton Abbey, where disasters large and small threaten the festivities.

MONDAY, AUG. 3

- 7:00 p.m. Antiques Roadshow** *Maryland Zoo, Hour 2* ROADSHOW finds rare treasures at Maryland Zoo!
- 8:00 p.m. Antiques Roadshow** *Maryland Zoo, Hour 3* ROADSHOW searches for hidden treasures in Maryland, including one \$150,000 - \$200,000 find!
- 9:00 p.m. POV** *The Gas Station Attendant* TV14 A poor Indian boy works hard and inspires his daughter's film about family and immigrants.
- 10:30 p.m. BBC News** TVRE
- 11:00 p.m. Amanpour and Company** TVRE

TUESDAY, AUG. 4

- 7:00 p.m. Finding Your Roots** *Love & Basketball* TVPG Henry Louis Gates Jr. maps the roots of basketball stars Brittney Griner and Chris Paul.
- 8:00 p.m. Once Upon a Time in Space** *Friends Forever* TV14
- 9:00 p.m. Breakthrough: The Ideas That Changed the World** *The Robot* TVPG
- 10:00 p.m. Firing Line with Margaret Hoover** TVRE
- 10:30 p.m. BBC News** TVRE
- 11:00 p.m. Amanpour and Company** TVRE

WEDNESDAY, AUG. 5

- 7:00 p.m. Nature** *Big Little Journeys: Bloodlines* TVPG A Madagascan chameleon and a Scottish water vole travel to secure their bloodlines.
- 8:00 p.m. NOVA** *Return to the Moon* TVPG Follow the Artemis mission to bring humanity back to the Moon for the first time since Apollo.
- 9:00 p.m. Bugs That Rule the World** *Beetlemania* TVPG Are beetles truly 'the most important species on the planet'?
- 10:00 p.m. To the Contrary with Bonnie Erbe** TVRE
- 10:30 p.m. BBC News** TVRE
- 11:00 p.m. Amanpour and Company** TVRE

THURSDAY, AUG. 6

- 7:00 p.m. Postcards** *Michael Horse and Gina Hessburg* In Two Harbors, indigenous artist and well-known actor Michael Horse creates ledger art and jewelry, while in Minneapolis, patient advocacy artist Gina Hessburg uses art to illustrate what it's like to live as an undiagnosed patient with an invisible disease.
- 7:30 p.m. Prairie Yard & Garden** *The Perennial Paradise - Paynesville* Before retiring, Rita and Jim Erickson transformed a passion for hostas into a stunning landscape. Host Mary Holm tours the garden to learn Rita's gardening secrets.
- 8:00 p.m. My Town** *Cory Regrets Leaving His Small Hometown* Growing up in this small town, all Cory Hepola ever thought about was moving to a big city to chase his dreams. Now, a 40-something husband with three little kids, Cory wonders what it would be like to move back. Curious, Cory meets with a man who chose to move to rural Minnesota and found exactly what he was looking for at an iconic candy company.
- 8:30 p.m. Modern Pioneering with Georgia Pellegrini** *France: The Noble Olive* Georgia heads back to the South of France to visit the Michelin restaurant she once worked at.
- 9:00 p.m. Hometowns** *Asheville, North Carolina* Discover Asheville, North Carolina, from craft breweries to street performers.
- 9:30 p.m. Austin City Limits** *Finneas* TVPG
- 10:30 p.m. BBC News** TVRE
- 11:00 p.m. Amanpour and Company** TVRE

FRIDAY, AUG. 7

- 7:00 p.m. Washington Week with The Atlantic** TVRE
- 7:30 p.m. Firing Line with Margaret Hoover** TVRE
- 8:00 p.m. Ag Phd**
- 8:30 p.m. Market to Market**
- 9:00 p.m. Chasing the Moon: American Experience** TVPG Experience the triumph of the first moon landing, witnessed by the largest TV audience in history.
- 11:00 p.m. Amanpour and Company** TVRE

SATURDAY, AUG. 8

- 6:00 p.m. Classic Gospel** *Bill Gaither: Some Things I Need to Say*
- 7:00 p.m. Les Stroud's Survivorman** *Arizona Desert, Part 1* TVPG Les heads to the Sonora Desert and rides a dirt bike out into an arid, desolate environment.
- 7:30 p.m. Prairie Sportsman** *Hen Houses and Insect Surveys*
- 8:00 p.m. Hiseerie** *Campfire Stories: Part 3* Join us around the campfire for spooky and strange stories from the Midwest.
- 8:30 p.m. Radio Bristol's Farm and Fun Time** *Cole Ritter & The Night Owls, Bobby Rush*
- 9:30 p.m. Grantchester on Masterpiece** *Season 10, Episode 8* TV14 Alpha and Geordie clash over how to approach a murder case.
- 10:30 p.m. Ireland in Music**
- 11:00 p.m. Austin City Limits** TVPG

SUNDAY, AUG. 9

- 6:00 p.m. Antiques Roadshow** *Maryland Zoo, Hour 2*
- 7:00 p.m. Postcards** *Michael Horse and Gina Hessburg*
- 7:30 p.m. Prairie Sportsman** *Late Season Ice Fishing and Native Bait* Host Bret Amundson joins Drake Herd to go ice fishing near Alexandria, and Barry Thoele welcomes us to his farm where he is raising native minnows and doing all he can to save the live bait industry in Minnesota.
- 8:00 p.m. D.I. Ray** *Episode 1* TV14 D.I. Rachita Ray is promoted to Homicide and realizes instantly she's there to 'tick a box.'
- 9:00 p.m. D.I. Ray** *Episode 2* TV14 D.I. Ray races to track down Anjali Kapoor, making some awful discoveries in the process.
- 10:00 p.m. Downton Abbey Season 3 on Masterpiece** *Part Two* TVPG The fate of Downton Abbey hinges on a letter from a dead man. Mrs. Hughes confronts a crisis.
- 11:00 p.m. Magpie Murders on Masterpiece** TV14

MONDAY, AUG. 10

- 7:00 p.m. Antiques Roadshow** *Idaho Botanical Garden, Hour 2* Watch breathtaking Boise appraisals at Idaho Botanical Garden. One is up to \$40,000!
- 8:00 p.m. Antiques Roadshow** *Idaho Botanical Garden, Hour 3* You won't be-leaf the top Boise find in the "City of Trees," appraised for up to \$100,000!
- 9:00 p.m. Weekend in Havana** Geoffrey Baer travels to Havana, Cuba, and visits with dancers, musicians, architects and writers.
- 10:00 p.m. Compass Points from PBS News** TVRE
- 10:30 p.m. BBC News** TVRE
- 11:00 p.m. Amanpour and Company** TVRE

TUESDAY, AUG. 11

- 7:00 p.m. Catching Giants** TVPG A team of bold scientists embarks on a giraffe research expedition in order to halt a silent extinction.
- 8:00 p.m. 10 Monuments That Changed America** Tour wholly original American monuments and explore surprising stories behind American favorites.
- 9:00 p.m. Live from the Artists Den** TVPG
- 10:00 p.m. Firing Line with Margaret Hoover** TVRE
- 10:30 p.m. BBC News** TVRE
- 11:00 p.m. Amanpour and Company** TVRE

WEDNESDAY, AUG. 12

- 7:00 p.m. Lion: The Rise and Fall of the Marsh Pride** TVPG The Marsh pride of lions battles for survival in Kenya's Maasai Mara Reserve.
- 8:30 p.m. The Letter: A Message for Our Earth** TVPG This feature film documents the story of five lives on a voyage of discovery and adventure.
- 10:00 p.m. To the Contrary with Bonnie Erbe** TVRE
- 10:30 p.m. BBC News** TVRE
- 11:00 p.m. Amanpour and Company** TVRE

CORNERSTONE BUILDERS

Every great organization depends on a core of faithful patrons whose commitment surpasses that of the customary gift. At Pioneer PBS, it is the Cornerstone Builders. These members are very aware of the impact and the tremendous potential Pioneer PBS has for enriching lives in our community and region for over 60 years.

Barbara Beasley
Minneapolis

Dick Barsness

Gary & Jane Bartlett
Parkers Prairie

Roger Boleman
Morris

Mary Brown
Montevideo

Lori Carter
Granite Falls

Doris Cogelow
Willmar

Peggy Crosby & Dave Pederson
Dawson

Lauren Davis
Alexandria

Noel Dunn
Maplewood

Leo P. Flynn Estate
Milbank, South Dakota

Shirley Fihn
Detroit Lakes

Van & Sue Gooch
Farwell

Roberta Hintz
New Ulm

Judith Hintze
Windom

Richard & Mary Huesing
Willmar MN

Mildred K. Huggins
Brookings, South Dakota

LaMont & Diane Jacobson
Sacred Heart

Andy Kaufman
Appleton

Pat Kubly
Granite Falls

Steven & Peg Lange
Pipestone

Dave & Sue Lorence
Lowry

Curt & Jeanette Olson
Granite Falls

Mark Olson & Bonnie Bohm
Willmar

Leland & Norma Raske
Marshall

Mary Kathryn Robbins
Wadena

Ralph & Marilyn Rolland
Carlos

Nathan Rugroden
St. Paul

Marlin Schenck
Minneapolis

Nancy Straw
Fort Myers, Florida

Francis Barry Schreiber
Zimmerman

Mark and Lori West
Alexandria

Linda Wing
Slayton

Several Anonymous Donors

Learn how you can make a difference for Pioneer PBS by becoming a Cornerstone Builder at 800-726-3178 or pioneer.org/majorgifts.



MEMORIAL & HONORARIUM GIFTS

Honor someone special with a gift that gives back. Memorial gifts offer comfort in times of loss, while honorarium gifts celebrate meaningful moments.

Both support a cause close to your heart. Learn more at pioneer.org/memorialgifts or contact our membership team at 800-726-3178.



SUPPORTING PUBLIC MEDIA WITH A PURPOSE

For Francis B. Schreiber, supporting Pioneer PBS is an investment in the stories, people and communities that make Minnesota unique. As a Cornerstone Builder, he helps ensure these stories can be celebrated.

What inspired you to become a Cornerstone Builder?

I became aware of the extraordinary work of Pioneer PBS about two years ago after being contacted by producer Susan Marks about a documentary she was producing about World War II prisoners of war in Minnesota. Her regional Emmy-winning documentary, *Held In Minnesota*, was a viral phenomenon, receiving over 680,000 online views thus far. This is the sort of Minnesota research and storytelling I want to be part of.

Why do you believe public television is important to western Minnesota and the surrounding region?

Pioneer PBS binds western Minnesota and outstate Minnesota together with programs which feature local stories, education and entertainment that simply cannot be found together in any single other platform.

Is there a particular Pioneer PBS program that has been especially meaningful to you?

The *Postcards* series features the unique stories of Minnesota neighbors and friends of which I would otherwise be unaware. These *Postcards* clearly dispel the notion that “nothing ever happens here,” and enrich the lives of all who learn about local neighbors who are working often quietly, but making wonderful contributions to the fabric of local life.

What makes Pioneer PBS different from other media sources you use?

Pioneer does not depend on national stars to light up its viewers’ lives. Pioneer shines its light on local people doing interesting, valuable, unique activities in our area. Pioneer makes clear that interesting, educational and informative people are our rural neighbors. Local storytelling reinforces local pride, local cohesion and communication, especially in these divisive times.

What would you tell someone who is considering making a financial contribution to Pioneer PBS?

If you want to make a difference in the future of Minnesota, invest in Pioneer PBS. The dividends will be paid forward for generations. I want Pioneer PBS to thrive in this moment of disappearing federal investment in public television. PBS is here to improve the lives of everyone.



JOIN BARRY & HELP US TELL THE STORIES OF OUR REGION



Pioneer  PBS
WE ARE
yours



● Postcards visited St. Paul musician and teacher Renee Vaughan to explore Sweden's national folk instrument, the nyckelharpa, and even gave it a try. Also pictured are Shari Lamke and Ben Dempcy.

● The new season of *Prairie Sportsman* takes viewers across Minnesota as the production team hits the road to uncover stories from prairies, forests, lakes and communities statewide. Along the way, they explore conservation efforts, outdoor traditions, wildlife rehabilitation and the people working to protect Minnesota's natural resources for future generations.



● KWLM Open Mic host JP Cola was joined in the studio by representatives from Pioneer PBS. Joining Cola were sponsorship associate Mikiaela Meyer, *Prairie Sportsman* producer Tom Desch and host Bret Amundson.

● While it looks like a day of fun — and it was pretty fun — a lucky few Pioneer PBS staff and board members spent a morning at a golf tournament fundraiser for fellow nonprofit Project Turnabout.



AUGUST

THURSDAY, AUG. 13

- 7:00 p.m.** **Postcards** *Bike Clubs and Carolyne Naomi* In Rochester, We Bike Rochester and Pata de Perro work with the community to provide bikes and resources for maintaining them. In the Twin Cities, singer, songwriter and guitarist Carolyne Naomi writes and performs music inspired by her Nigerian heritage.
- 7:30 p.m.** **Prairie Yard & Garden** *Plants Beautiful - Parkers Prairie* Host Mary Holm visits Plants Beautiful Nursery near Parkers Prairie, where owner Lowell Dittberner demonstrates how Japanese-style topiaries can thrive in Minnesota and shares expert growing tips.
- 8:00 p.m.** **My Town** *Cory Was Wrong About Small Town Iowa* Cory finds out he was wrong about Iowa as he meets with three different people who choose to live in this rural region for unique reasons. Whether immigrating from another country or staying here for life, Cory discovers everyone is welcome.
- 8:30 p.m.** **Modern Pioneering with Georgia Pellegrini** *The Lakota Nation: A Story of Empowerment* Georgia travels to South Dakota to visit the Rosebud Native American Reservation.
- 9:00 p.m.** **Hometowns** *Grand County, CO* Venture into Grand County, Colorado, where mountain culture and outdoor spirit meet.
- 9:30 p.m.** **Austin City Limits** *Role Model/Mj Lenderman & The Wind* TVPG
- 10:30 p.m.** BBC News TVRE
- 11:00 p.m.** Amanpour and Company TVRE

FRIDAY, AUG. 14

- 7:00 p.m.** **Washington Week with The Atlantic** TVRE
- 7:30 p.m.** **Firing Line with Margaret Hoover** TVRE
- 8:00 p.m.** **Ag PhD**
- 8:30 p.m.** **Market to Market**
- 9:00 p.m.** **October Shadows: An Exploration of Trauma And Healing After October 7** TVPG Delve into an intimate exploration of the ramifications of the October 7 Hamas attacks.
- 10:30 p.m.** **Becoming America with Bonnie Boswell** TVPG
- 11:00 p.m.** Amanpour and Company TVRE

SATURDAY, AUG. 15

- 6:00 p.m.** **Classic Gospel** *The Collingsworth Family: Just Sing*
- 7:00 p.m.** **Les Stroud's Survivorman** *Arizona Desert, Part 2* TVPG Les heads to the Sonora Desert and rides a dirt bike out into an arid, desolate environment.
- 7:30 p.m.** **Prairie Sportsman** *Late Season Ice Fishing and Native Bait*
- 8:00 p.m.** **Hiseerie** *Farrar Elementary School* Join us on an investigation at the haunted Farrar Elementary School in central Iowa. Owned by popular YouTubers Sam and Colby, we had a chance to learn about the school's history and conduct our own investigation.
- 8:30 p.m.** **Radio Bristol's Farm and Fun Time** *Shay Martin Lovette, Pony Bradshaw*
- 9:30 p.m.** **The Marlow Murder Club on Masterpiece** *Episode 1* TV14
- 10:30 p.m.** **Ireland in Music**
- 11:00 p.m.** **Austin City Limits** TVPG

SUNDAY, AUG. 16

- 6:00 p.m.** **Antiques Roadshow** *Idaho Botanical Garden, Hour 2*
- 7:00 p.m.** **Postcards** *Bike Clubs and Carolyne Naomi*
- 7:30 p.m.** **Prairie Sportsman** *Muzzleloaders, Mussels, and Mushrooms* Host Bret Amundson joins a group of veterans at a muzzleloader deer hunt with Warriors and Walleyes; the Minnesota DNR's Center for Aquatic Mollusk Programs relocates native mussels for the restoration of Olson's Island in the Mississippi River; and forager Nicole Zempel teaches us about the Oyster Mushroom.
- 8:00 p.m.** **D.I. Ray** *Episode 3* TV14 D.I. Ray discovers evidence that she is dealing with highly dangerous organized criminals.
- 9:00 p.m.** **D.I. Ray** *Episode 4* TV14 D.I. Ray's personal and professional life collide after a shocking discovery.
- 10:00 p.m.** **Downton Abbey Season 3 on Masterpiece** *Part Three* TVPG Social revolutions arrive at Downton Abbey: the Irish civil war and the fight for women's suffrage.
- 11:00 p.m.** **Magpie Murders On Masterpiece** TV14

MONDAY, AUG. 17

- 7:00 p.m.** **Antiques Roadshow** *Shelburne Museum, Hour 1* Get wowed by shocking finds at Shelburne Museum!
- 8:00 p.m.** **Antiques Roadshow** *Shelburne Museum, Hour 2* Visit the Green Mountain State for colorful finds. One is \$50,000 to \$125,000!

- 9:00 p.m.** **Inside the Court of Henry VIII** TVPG The danger and intrigue associated with Henry VIII, the most famous of English kings, is explored.
- 10:00 p.m.** **Compass Points from PBS News** TVRE
- 10:30 p.m.** BBC News TVRE
- 11:00 p.m.** Amanpour and Company TVRE

TUESDAY, AUG. 18

- 7:00 p.m.** **Finding Your Roots** *Westward Bound* TVPG Henry Louis Gates Jr. heads west to map the family trees of Sara Haines and Tracy Letts.
- 8:00 p.m.** **American Masters** *Starring Dick Van Dyke* TVPG Celebrate the life and career of legendary actor Dick Van Dyke on his 100th birthday.
- 10:00 p.m.** **Firing Line with Margaret Hoover** TVRE
- 10:30 p.m.** BBC News TVRE
- 11:00 p.m.** Amanpour and Company TVRE

WEDNESDAY, AUG. 19

- 7:00 p.m.** **Nature** *Lions of the Skeleton Coast* TV14 Dr. Philip Stander follows three orphaned desert lion cubs as they navigate survival.
- 8:00 p.m.** **NOVA** *Cat Tales* Did humans ever domesticate felines? Science sheds light on a relationship that predates history.
- 9:00 p.m.** **Resolve to Solve with Miles O'Brien** TVPG
- 10:00 p.m.** **To the Contrary with Bonnie Erbe** TVRE
- 10:30 p.m.** BBC News TVRE
- 11:00 p.m.** Amanpour and Company TVRE

THURSDAY, AUG. 20

- 7:00 p.m.** **Postcards** *Wanda Bahmet and Clay Fulton and the Lost 40* Wanda Bahmet shares her story of surviving a WWII Nazi work camp and her life in the United States after the war. In Rochester, roots rock band Clay Fulton and the Lost 40 host a music celebration at the Historic Chateau Theatre.
- 7:30 p.m.** **Prairie Yard & Garden** *Living Legacy Gardens - Staples* Host Mary Holm tours Living Legacy Gardens in Staples with Garden Manager Tammy Rick, who showcases volunteer-supported educational gardens and highlights plants that thrive in Minnesota's Zone 3 climate conditions.
- 8:00 p.m.** **My Town** *Cory Discovers The American Dream In This Small Town* Cory discovers "The America Dream" in small town Willmar, Minnesota, a rural melting pot of diverse businesses, agriculture, and innovation. Learning how to feed cows, Cory finds true happiness on the farm.
- 8:30 p.m.** **Modern Pioneering with Georgia Pellegrini** *The Bovina Farm and Fermentory Story* Explore a stunning homestead when Georgia visits the Catskills in New York.
- 9:00 p.m.** **Hometowns** *Chincoteague Island, Virginia* Step onto Chincoteague Island, Virginia, a coastal community known for fishing traditions.
- 9:30 p.m.** **Austin City Limits** *Mickey Guyton/Carin Leon* TVPG
- 10:30 p.m.** BBC News TVRE
- 11:00 p.m.** Amanpour and Company TVRE

FRIDAY, AUG. 21

- 7:00 p.m.** **Washington Week with The Atlantic** TVRE
- 7:30 p.m.** **Firing Line with Margaret Hoover** TVRE
- 8:00 p.m.** **Ag PhD**
- 8:30 p.m.** **Market to Market**
- 9:00 p.m.** **Great Performances at the Met** *Eugene Onegin* TVPG Asmik Grigorian returns to the Met as Tatiana alongside Igor Golovatenko's tragic Onegin.

SATURDAY, AUG. 22

- 6:00 p.m.** **Classic Gospel** *Gaither Vocal Band: Good Things Take Time*
- 7:00 p.m.** **Les Stroud's Survivorman** *Costa Rica, Part 1* TVPG Discover the lush rainforests and tropical beaches of Costa Rica with Les Stroud.
- 7:30 p.m.** **Prairie Sportsman** *Muzzleloaders, Mussels, and Mushrooms*
- 8:00 p.m.** **Hiseerie** *Campfire Stories: Part 4* Join us around the campfire for spooky and strange stories from the Midwest.
- 8:30 p.m.** **Radio Bristol's Farm and Fun Time** *Florenca & the Feeling, Black Opry: Roberta Lee and Mel Washington*
- 9:30 p.m.** **The Marlow Murder Club on Masterpiece** *Episode 2* TV14 The trio follows clues that lead them to a chilling discovery.
- 10:30 p.m.** **Songs at the Center** TVPG
- 11:00 p.m.** **Austin City Limits** TVPG

SUNDAY, AUG. 23

- 6:00 p.m.** **Antiques Roadshow** *250 Years of Americana*
- 7:00 p.m.** **Postcards** *Wanda Bahmet and Clay Fulton and the Lost 40*
- 7:30 p.m.** **Prairie Sportsman** *On the Great River and Beefsteak Fungus* Host Bret Amundson takes to the Mississippi for some midwinter fishing in downtown St. Paul; *Prairie Sportsman* visits the St. Anthony Falls Laboratory in downtown Minneapolis to learn how the facility harnesses the waters of the Mississippi for scientific research; and forager Nicole Zempel teaches us about a “meaty” mushroom, the beefsteak fungus.
- 8:00 p.m.** **Mr. Bates vs. The Post Office on Masterpiece** *Episode 1* TVPG Mysterious financial losses lead the post office to prosecute village Subpostmasters.
- 9:00 p.m.** **Mr. Bates vs. The Post Office on Masterpiece** *Episode 2* TV14 Alan Bates and the subpostmasters begin their fight for truth and justice.
- 10:00 p.m.** **Downton Abbey Season 3 on Masterpiece** *Part Four* TVPG The Crawley family faces its severest test yet. New faces join the tight-knit circle of servants.
- 11:00 p.m.** *Magpie Murders on Masterpiece* TV14

MONDAY, AUG. 24

- 7:00 p.m.** **Antiques Roadshow** *Shelburne Museum, Hour 3* Watch vibrant Vermont treasures from Shelburne Museum, including one worth up to \$150,000!
- 8:00 p.m.** **Antiques Roadshow** *New York City, Hour 1* Highlights include rare baseball cards and a headboard from the set of *The Godfather, Part II*.
- 9:00 p.m.** **POV** *How to Build a Library* TV14
- 10:30 p.m.** BBC News TVRE
- 11:00 p.m.** Amanpour and Company TVRE

TUESDAY, AUG. 25

- 7:00 p.m.** **Finding Your Roots** *Family Harmonies* TVPG Henry Louis Gates Jr. introduces musicians Flea and Lizzo to their inspiring ancestors.
- 8:00 p.m.** **American Masters** *Mary Oliver: Saved by the Beauty of the World* TV14 Celebrate Pulitzer-winner Mary Oliver and her beautiful works that explored nature and life.
- 9:30 p.m.** **Iconic America: Our Symbols and Stories with David Rubenstein** *The American Bald Eagle* TVPG Learn how the American Bald Eagle soared to its vaunted perch in American iconography.
- 10:30 p.m.** BBC News TVRE
- 11:00 p.m.** Amanpour and Company TVRE

WEDNESDAY, AUG. 26

- 7:00 p.m.** **Nature** *Grizzly 399: Queen of the Tetons* TV14 The most famous bear in the Tetons attempts to raise cubs in the midst of conflicts with people.
- 8:00 p.m.** **NOVA** *Dog Tales* Researchers reveal how humans tamed fearsome canines over tens of thousands of years.
- 9:00 p.m.** **Resolve to Solve with Miles O'Brien** TVPG
- 10:00 p.m.** **To the Contrary with Bonnie Erbe** TVRE
- 10:30 p.m.** BBC News TVRE
- 11:00 p.m.** Amanpour and Company TVRE

THURSDAY, AUG. 27

- 7:00 p.m.** **Postcards** *Carpet Booth Studios, Evelyn Johnson, and the Bandura Duo* Audio engineer Zach Zurn works with musical artists from the Midwest and beyond at Carpet Booth Studios in Rochester. In Willmar, artist Evelyn Johnson creates multi-dimensional pieces honoring people of the past. Siblings Angelika and Justin Mehes of the musical group Bandura Duo discuss the historic Ukrainian instrument the Bandura.
- 7:30 p.m.** **Prairie Yard & Garden** *The Plant Addict - Fargo* Plant enthusiast Charles Elhard has transformed his passion into a lifestyle, carefully tending his landscape, houseplants and colorful containers with creativity and dedication.
- 8:00 p.m.** **My Town** *Cory Learns to Love Small Town Wisconsin* Shrugging off his petty personal bias against Wisconsin, Cory learns you don't have to sacrifice your dream by moving to a small town. Meeting a man who chose to start his national construction company in rural Beaver Dam, Cory finds the incredible impact a company can have on its community.

- 8:30 p.m.** **Modern Pioneering with Georgia Pellegrini** *Honoring Your History by Serving the Community* Georgia meets two women who are working to reclaim the land their ancestors once worked.

- 9:00 p.m.** **Hometowns** *The Shoals, Alabama* Travel to The Shoals, Alabama, where the sounds of Muscle Shoals shaped American music.

- 9:30 p.m.** **Austin City Limits** *Bonnie Raitt* TVPG

- 10:30 p.m.** BBC News TVRE

- 11:00 p.m.** Amanpour and Company TVRE

FRIDAY, AUG. 28

- 7:00 p.m.** **Washington Week with The Atlantic** TVRE

- 7:30 p.m.** **Firing Line with Margaret Hoover** TVRE

- 8:00 p.m.** **Ag PhD**

- 8:30 p.m.** **Market to Market**



Great Performances Vienna Philharmonic Summer Night Concert 2026

- 9:00 p.m.** **Great Performances Vienna Philharmonic Summer Night Concert 2026** TVPG A guest soloist joins the world-renowned Vienna Philharmonic in an open-air concert.
- 10:30 p.m.** **Stroke Across America: Trauma. Adaptation. Purpose.**
- 11:00 p.m.** Amanpour and Company TVRE

SATURDAY, AUG. 29

- 6:00 p.m.** **Classic Gospel** *Ernie Haase & Signature Sound: Something Beautiful*

- 7:00 p.m.** **Les Stroud's Survivorman** *Costa Rica, Part 2* TVPG Discover the lush rainforests and tropical beaches of Costa Rica with Les Stroud.

- 7:30 p.m.** **Prairie Sportsman** *On The Great River and Beefsteak Fungus*

- 8:00 p.m.** **Hiseerie** *Malvern Manor: Part 1*

- 8:30 p.m.** **Radio Bristol's Farm and Fun Time** *Johnny Long, Darrell Scott*

- 9:30 p.m.** **The Marlow Murder Club on Masterpiece** *Episode 3* TV14 The police make a forensic breakthrough on the crime scene evidence.

- 10:30 p.m.** *Songs at the Center* TVPG

- 11:00 p.m.** *Live from the Artists Den* TVPG

SUNDAY, AUG. 30

- 6:00 p.m.** **Antiques Roadshow** *Shelburne Museum, Hour 3*

- 7:00 p.m.** **Postcards** *Carpet Booth Studios, Evelyn Johnson, and the Bandura Duo*

- 7:30 p.m.** **Prairie Sportsman** *A Decade of Minnesota and Pristine to Green* Host Bret Amundson reflects on 10 years of hosting *Prairie Sportsman* and recalls some of his favorite moments in front of the show's camera. Researchers are investigating cyanobacteria blooms where they least expect them, Minnesota's pristine northern lakes.

- 8:00 p.m.** **Mr. Bates vs. The Post Office on Masterpiece** *Episode 3* TV14 Alan allies with the post office in his search for justice, but can he trust them?

- 9:00 p.m.** **Mr. Bates vs. The Post Office on Masterpiece** *Episode 4* TV14 Alan and his friends finally get their chance in court against the post office.

- 10:00 p.m.** **Downton Abbey Season 3 on Masterpiece** *Part Five* TVPG Robert and Cora are not speaking. The servants are shunning Matthew's mother. Bates takes a gamble.

- 11:00 p.m.** *Magpie Murders on Masterpiece* TV14

MONDAY, AUG. 31

- 7:00 p.m.** **Antiques Roadshow** *New York City, Hour 2* A show run from the Beatles' first *Ed Sullivan Show* appearance is appraised in the Big Apple.

- 8:00 p.m.** **Antiques Roadshow** *New York City, Hour 3* Highlights include a Tiffany presentation watch and a 1943 Irving Berlin manuscript.

- 9:00 p.m.** **POV**

- 10:30 p.m.** BBC News TVRE

- 11:00 p.m.** Amanpour and Company TVRE

Please find complete and current listings online at pioneer.org/schedule.

	Sunday	Monday*	Tuesday	Wednesday	Thursday	Friday	Saturday
11:30	Opportunity Knocks	Best of the Joy of Painting	Medical Stories	Climate California (7/1-7/15) Follow the Blooms (7/22-8/26)	Wild Foods (7/2-7/16) Life in Virginia's Appalachia (7/23-8/27)	Indian as Apple Pie	Ag PhD
12:00	Whitney Reynolds Show	Hiseerie	MotorWeek			Common Ground	Market to Market
12:30	J. Schwanke's Life in Bloom	 Prairie Sportsman	Ask This Old House	History Detectives	Classical Tahoe	This Old House	This Old House
1:00	American's Test Kitchen	Prairie Yard & Garden	Museum Access (7/7-8/11) Walkin' West (8/18-8/25)	Books by the River (7/1-7/15) Blind Adventures with Ron (7/22-8/26)	Recipe for Wellness (7/2-7/16) Eric En Plein Air (7/23-8/27)	Travel Detective (7/2-8/7) Seniority Authority (8/14-8/28)	America's Heartland
1:30	MotorWeek	 Postcards	Best of the Joy of Painting	Lucky Chow (7/1-7/15) Econsense for Living (7/22-8/26)	Joseph Rosendo's Steppin' Out	Fons & Porter's Love of Quilting	Woodsmith Shop
2:00		Funtime Polka	Garden Smart	Joy of Painting with Nicholas Hankins	Son of a Butcher	Best of Sewing with Nancy	Savers of Favor (7/4-7/18) Hometowns (7/25-7/29)
2:30	Various Programming	Fit 2 Stitch	View Finders	Energy Switch	Family Plot: Gardening in the Mid-South (7/2-7/30) Home-Scale Forest Garden (7/2-7/30)	Christina Cooks: Back to the Basics (7/3) Food. Curated. (7/10-8/29)	Christopher Kimball's Milkstreet
3:00		Alma's Way	Alma's Way	Alma's Way	Alma's Way	Alma's Way	Weekends with Yankee

Pioneer  **PBS**

Help sustain the future of Pioneer PBS for another 60 years.

BECOME A SUSTAINING MEMBER.

Learn more at pioneer.org/support

SHARING YOUR STORIES WITH THE WORLD ● ● ●

Feature your business here.

PARTNER WITH PIONEER PBS TO GROW YOUR BUSINESS.

Learn more at 800-726-3178.

mmeyer@pioneer.org
320-289-2929

PBS KIDS ACROSS AMERICA BINGO



WEEKDAYS

6:00 a.m.	Wild Kratt's
6:30 a.m.	Weather Hunters
7:00 a.m.	Lyla in the Loop
7:30 a.m.	Carl the Collector
8:00 a.m.	Daniel Tiger's Neighborhood
8:30 a.m.	Phoebe & Jay
9:00 a.m.	Sesame Street
9:30 a.m.	Work It Out Wombats!
10:00 a.m.	Donkey Hodie
10:30 a.m.	Rosie's Rules
11:00 a.m.	Elinor Wonders Why
3:00 p.m.	Alma's Way
3:30 p.m.	Odd Squad
4:00 p.m.	Molly of Denali
4:30 p.m.	Xavier Riddle and the Secret Museum
5:00 p.m.	Arthur

SATURDAYS & SUNDAYS

5:00 a.m.	Mister Rogers' Neighborhood
5:30 a.m.	Arthur
6:00 a.m.	Wild Kratt's
6:30 a.m.	Weather Hunters
7:00 a.m.	Lyla in the Loop
7:30 a.m.	Carl the Collector
8:00 a.m.	Daniel Tiger's Neighborhood
8:30 a.m.	Phoebe & Jay

Schedule is subject to change.



LET'S GET SLIMY!
MAKE SOME DIY SLIME JUST IN TIME
TO CELEBRATE 4TH OF JULY

FIND MORE FUN ACTIVITIES AT
pioneer.org/kids



Share a story, spark imagination.

On PBS KIDS!



WHERE TO WATCH PIONEER PBS KIDS

Over the Air • PBS KIDS Video App
Live TV: Prime Video • Hulu • YouTube TV
24/7 Kids Channel: pbskids.org/video

PBS
KIDS

Alma's
Way

You've got it in you!

Alma in Oz: The Musical!





NORWEGIAN HERITAGE COMES TO LIFE

Discover stories of Norwegian heritage, family history and craftsmanship through two inspiring documentaries.

What began as a search for the history of a single pair of boots and why knitting was so important to her great-great grandmother evolves into two heartfelt explorations of heritage, craftsmanship, and the enduring connection between Norway and the American Midwest.

KNIT WITH LOVE and FROM NESNA WITH LOVE

JULY 11
9 A.M. – 5 P.M.
FILM SCREENING AT 11 A.M.

VESTERHEIM NORWEGIAN-AMERICAN MUSEUM
Decorah, Iowa

Enjoy free museum admission, family activities and lunch from the Pupusas Wendy Food Truck.



2026 Bush Fellows

Meet the leaders doing amazing things in their communities and discover their big ideas for what is possible at bushfoundation.org.



BECOME A Friend

HELP US GROW.

YOUR SUPPORT HELPS US
CONTINUE TO TELL
THE STORIES OF OUR REGION.



PRAIRIE YARD & GARDEN



PRAIRIE SPORTSMAN



HISEERIE

WHY PARTNER WITH US?

Pioneer PBS has many ways of acknowledging your organization's generous contribution and sharing your name with our audience.

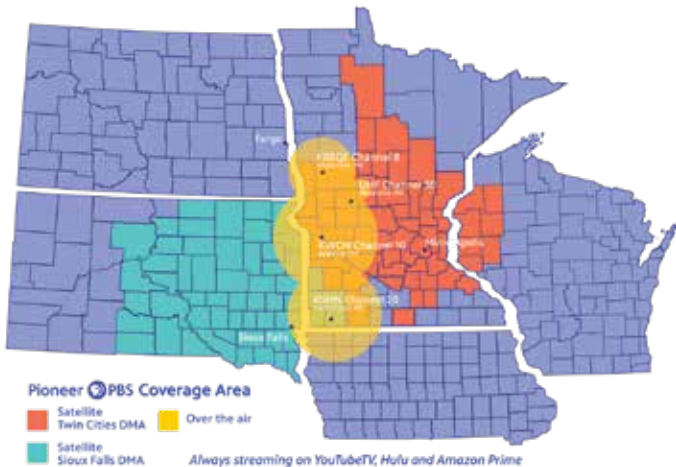
By becoming a sponsor, your business does more than just place its name alongside beloved PBS content - it builds a legacy when it joins a community built on trust, quality and cultural impact.

The trust and goodwill our viewers feel about Pioneer PBS naturally extends to the businesses that support us.

71% of PBS viewers say they feel more positive about companies that sponsor PBS.

PIONEER COVERAGE AREA

Pioneer PBS serves more than a million people in rural areas and small towns in the southwest and west central portions of the state of Minnesota, northwestern Iowa, eastern South Dakota, southwestern North Dakota and beyond.



LET'S CONNECT!

If you're ready to learn more, let's talk.
mmeyer@pioneer.org | 320-289-2929

WAYS TO REACH OUR VIEWERS

ON-AIR

Frequency options that fit your goals, budget and help you stay relevant with our viewers.

DIGITAL

Reach out to our most engaged viewers through streaming pre-rolls, email newsletters, website and social medias.

PUBLICATION & COMMUNITY ENGAGEMENT

Gain visibility through ads in our bi-monthly Pioneer Preview magazine and sponsorship opportunities for screening events and community engagement.

PIONEER PBS SPONSORSHIPS DELIVER BENEFITS THAT HELP YOUR BUSINESS OR ORGANIZATION STAND OUT IN WAYS THAT COMMERCIAL MEDIA CANNOT.

- Pioneer PBS programs have less “message clutter” than other broadcast or cable programming, allowing viewers to easily recall sponsor messages.
- Programs on Pioneer PBS air without commercial interruption, which keeps viewers engaged.

94% of viewers say they trust PBS sponsors more than commercial advertisers.

60 *years*

SHARING YOUR STORIES WITH THE WORLD

BUSINESS SUPPORTERS



Shalom Hill Farm
Windom



Marshall Radio
Marshall



Christensen Broadcasting (*Pipestone*)
Explore Alexandria (*Alexandria*)
Heartland Motor Company (*Morris*)
Lakeland Media | Willmar Radio (*Willmar*)
96.7 KRAM (*Montevideo*)
Minnesota Corn (*St. Paul*)
West Central Initiative (*Fergus Falls*)

Big Stone County SWCD (*Ortonville*)
KLOP Radio (*Madison*)
Lac qui Parle County SWCD (*Madison*)
Meeker County SWCD (*Litchfield*)
Minnesota Public Radio (*Collegeville*)
Swift County Parks, Drainage and Wetlands (*Benson*)
Victor Lundeen Company (*Fergus Falls*)
Wright County SWCD (*Buffalo*)
Yellow Medicine County SWCD (*Clarkfield*)

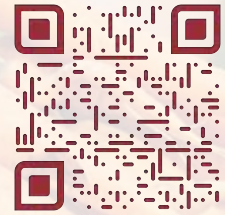
Hug Hydronics (*Pine River*)
Meander Upper Minnesota River Art Crawl (*Appleton*)
Minnesota Cooks Calendar (*St. Paul*)
Nationwide Glass (*Willmar*)
Senior Perspective (*Glenwood*)
Upper Minnesota Valley Regional Development Commission (*Appleton*)
Upper Sioux Community - Wicozani Walk (*Granite Falls*)

Are you a business or do you know of a business who might benefit from underwriting with Pioneer PBS? Contact us at mmeyer@pioneer.org to start the conversation.



Scan here with your smart phone to learn more about business sponsorship opportunities with Pioneer PBS.

minnesota cooks™



Celebrating the partnerships between Minnesota's dedicated farmers and talented chefs

Heartland
MOTOR COMPANY



SERVING MINNESOTA, NORTH DAKOTA AND SOUTH DAKOTA



LEARN MORE



**BIG ENOUGH TO SERVE YOU!
SMALL ENOUGH TO KNOW YOU.**



LEARN MORE

ON AIR

Pioneer  PBS
PIONEER PREVIEW

1 Pioneer Dr. | Granite Falls, MN 56241

PERIODICAL



MYSTERY LOVES AN

INTERNATIONAL INCIDENT



ASTRID



MADMOISELLE
HOLMES



MURDER IN THE
MOUNTAINS

Pioneer PBS
 Passport

STREAM NOW