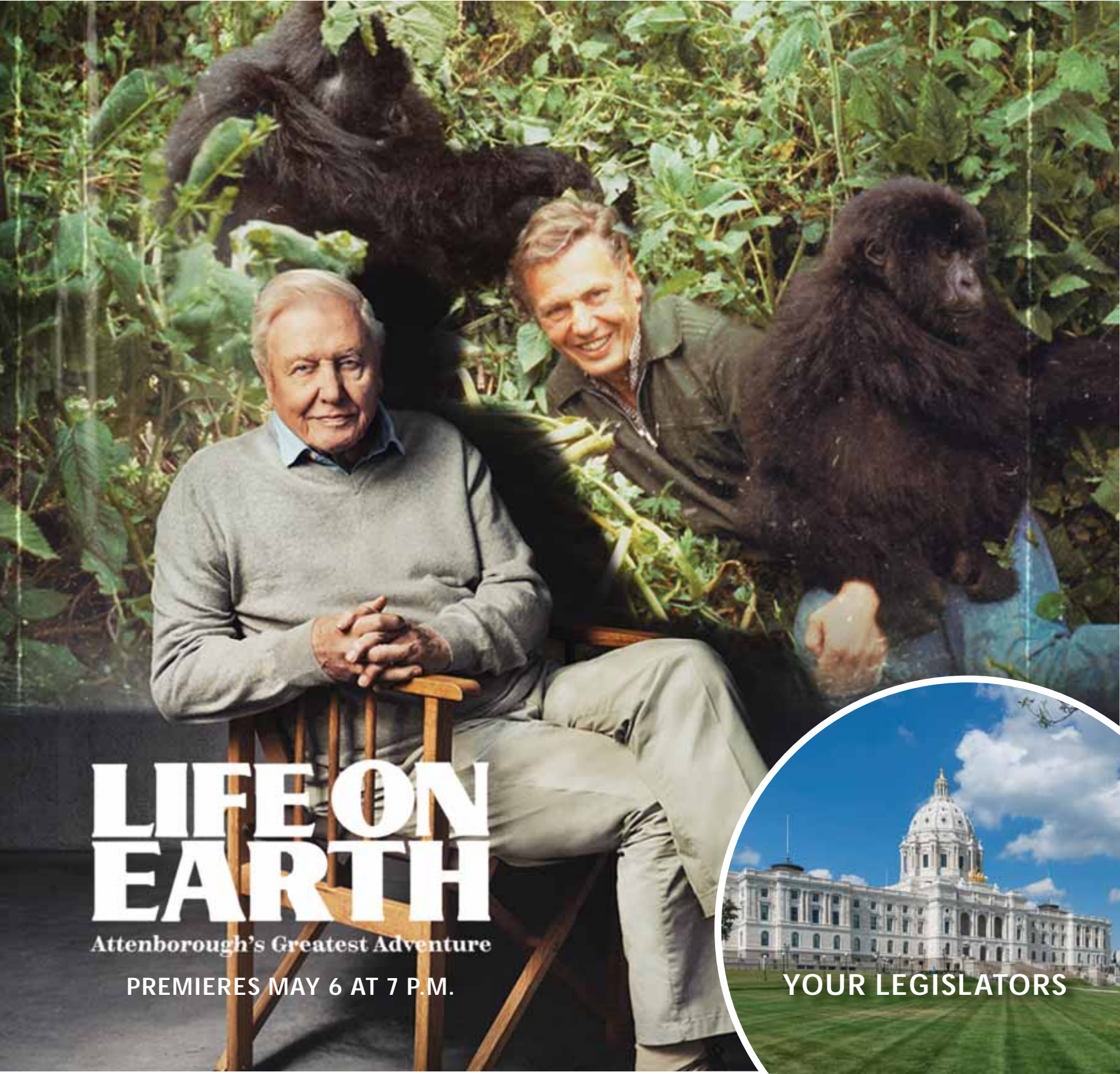


MAY - JUNE '26

f @ y in d

Pioneer  PBS

PIONEER PREVIEW



LIFE ON EARTH

Attenborough's Greatest Adventure

PREMIERES MAY 6 AT 7 P.M.

YOUR LEGISLATORS

Dear Valued Pioneer PBS members,

Summer is knocking! This is an exciting time of year. We look forward to watching the crops grow all around us and seeing all the new baby animals as they join us on this earth.

We also welcome the tourists who make their way to western Minnesota and may see Pioneer PBS for the first time. So, if this guide is sitting in an Air B&B, hotel lobby or your grandparent's house, please enjoy. For all of our loyal members, thank you for your dedication to us. From your monetary gifts, the kindness of your time or just the willingness to open your homes and hearts to us, you are truly what makes what we do possible! We pride ourselves on 60 years of telling your stories and bringing the world to your living room.

You might have seen headlines about a federal judge ruling the executive order to defund PBS and NPR was unconstitutional. We have had folks say "congratulations" to us. While it does make it seem like public media funding would be restored by that decision, it does not. The ruling affirms the role public media plays in our democracy, but the funding loss came when Congress clawed back funds it had allocated two years prior. Federal funding is not back. We continue to search for our path forward with a loss of one-third of our annual budget. We continue to have to make heart-wrenching decisions, while we establish the limits of what we can do with a severely tightened belt.

We are having great conversations with some of the other rural Minnesota PBS stations about where we might be able to work together to find efficiencies. These were conversations we were actually having before the funding loss. These will be helpful steps. We will do what we need to do to continue to be here serving you as the only broadcaster in much of the region we serve.

There are likely still tough decisions ahead, but we will make those decisions with you in mind and with the funding available.

When we say you make Pioneer PBS possible, we truly mean it. We do what we do for you, but we cannot do it without you. Thank you for all you have done and continue to do to help Pioneer PBS through these challenging times.



Respectfully,

Shari Lamke, President & General Manager

CHANNEL GUIDE

Did you know you can receive Pioneer PBS's six channels for free with a digital TV and an antenna if you are in range of one of our three broadcast towers?

	Pioneer PBS	@create	WORLD	MN channel	PBS	FNX
Appleton	10.1	10.2	10.3	10.4	10.5	10.6
Worthington	20.1	20.2	20.3	20.4	20.5	20.6
Fergus Falls	8.1	8.2	8.3	8.4	8.5	8.6
Dish Network	10/20					
DirecTV	10/20					
YouTube TV	•			•		
Hulu Live TV	•			•		
Prime Video	•			•		

YouTube TV, Hulu, and Prime Video are live streaming platforms.



For a complete program lineup for all Pioneer PBS channels, go to pioneer.org/schedule or scan the QR code.

Watch our Live TV Stream at pioneer.org/live

Contact us at 800-726-3178 or e-mail us at yourtv@pioneer.org for more information. For a complete schedule of programming on Pioneer PBS, visit pioneer.org/schedule.



The Pioneer Preview

Managing Editor: Chelsea Lund
800-726-3178 | clund@pioneer.org

Pioneer Preview designer: Chelsea Lund
Impressions by Chelsea

POSTMASTER: Send address changes to
PIONEER PREVIEW
1 Pioneer Dr.
Granite Falls, MN 56241

The Pioneer Preview, May - June 2026, Volume 57, No. 3.
The Pioneer Preview is the official program listing for Pioneer PBS. The Pioneer Preview is published six times yearly by West Central Minnesota Educational Television Company, a nonprofit organization, (ISSN 1081-7298). Its office is located at 1 Pioneer Dr., Granite Falls, MN 56241 800-726-3178.
Printed in the USA. Periodicals Postage Paid Granite Falls, Minnesota, and at additional mailing offices. Subscriptions available only to contributing members.

BOARD OF DIRECTORS

Penny Retzer
Fergus Falls

Vice Chair Gary Bartlett
Parkers Prairie

Secretary-Treasurer LaMont Jacobson
Sacred Heart

Mark Olson, Willmar; Charles Grussing, Alexandria; Rebecca Petersen, Fergus Falls; Jennifer Schmidt, Fergus Falls; Kevin Bienias, Alexandria; Chris Haarstick, Maple Grove; Jeet Sausen, Richfield; Luanne Fondell, Dawson.

Pioneer PBS's Board of Directors meets every other month at Pioneer PBS in Granite Falls, Minn. If you think you or someone you know would be a good addition to the board of directors, send your suggestions for nominations to: The Board of Directors Nominating Committee, Pioneer PBS, 1 Pioneer Dr., Granite Falls, MN 56241.

COMMUNITY ADVISORY BOARD

Mona Gregersen, Starbuck; Aaron Olson, Elbow Lake; Sheila Tabaka, Marshall; Julia K. Dabbs, Morris

The Pioneer PBS Community Advisory Board is a non-voting, non-governing board of community leaders charged with advising the station on whether its programming meets the needs of the region. They interact with staff and offer insight to the challenges and opportunities facing public TV. All meetings are open to the public. If you think you or someone you know would be a good addition to the community advisory board, send your suggestions for nominations to: Community Advisory Board Nominating Committee, Pioneer PBS, 1 Pioneer Dr., Granite Falls, MN 56241.

LEARN MORE ABOUT OUR BOARD OF DIRECTORS AND COMMUNITY ADVISORY BOARD AT PIONEER.ORG/GOVERNANCE.

CONNECT WITH

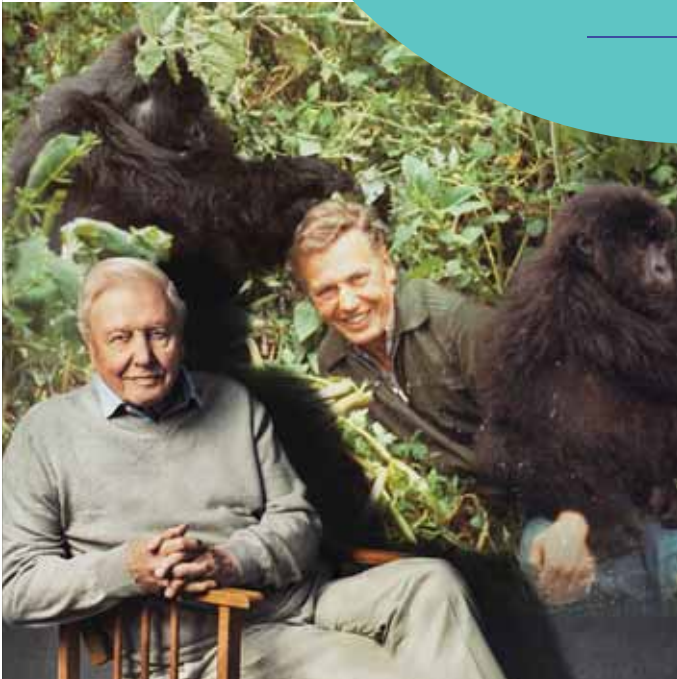


SUBSCRIBE TO OUR NEWSLETTERS!

pioneer.org/newsletters

Pioneer PBS is committed to safeguarding your privacy. We do not sell, rent or exchange the information you have entrusted to us.

ON THE COVER

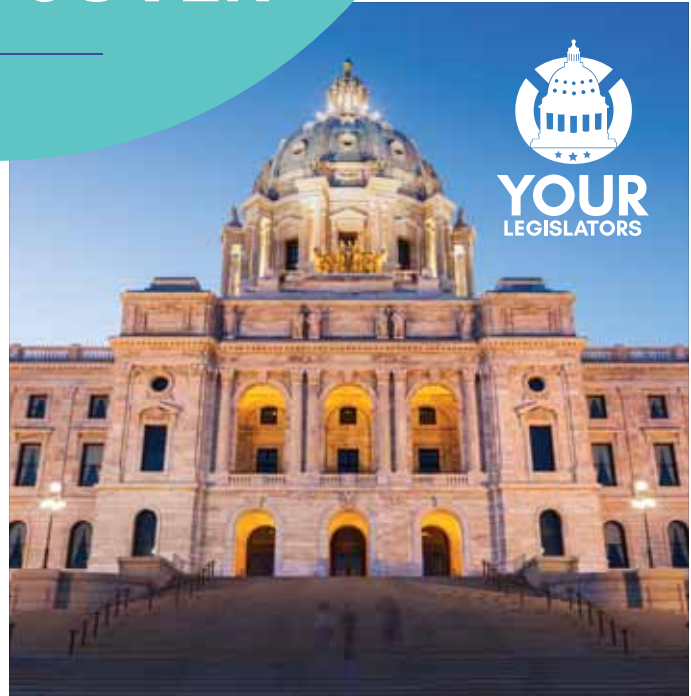


LIFE ON EARTH

ATTENBOROUGH'S GREATEST ADVENTURES

WEDNESDAY, MAY 6 AT 7 P.M.

In 1976 David Attenborough embarked on his most ambitious project ever. No-one had ever attempted a natural history series on this scale before. His reputation was on the line. This is the story behind TV's first wildlife blockbuster, Life on Earth.



A PIONEER PBS ORIGINAL SERIES

YOUR LEGISLATORS

THURSDAY, MAY 21 AT 8 P.M.

Host Barry Anderson leads a discussion on the 2026 legislative session with members of state leadership, offering insight into current issues and policy decisions. First broadcast in 1984, *Your Legislators* is a public affairs program produced for public television stations serving Minnesota. The program connects citizens directly with their elected officials, providing an opportunity for viewers to ask questions and engage in the legislative process. If you have a question for your legislators, submit your questions at 800-726-3178 or email us at yourtvp@pioneer.org.

COMING SOON TO PIONEER PBS



THE MAGIC OF ICELAND

Icelandic storyteller Júlía Óttarsdóttir explores the hidden world of Iceland's scenery and elves.

SUNDAY, MAY 3 AT 3:30 P.M.



MINNESOTA AND THE AMERICAN STORY "REVOLUTIONARY ROOTS"

Hear the stories of citizens, families, and communities who continue to steward America's founding ideals, reminding us that the Revolution was not simply a moment in history, but a promise passed down through generations.

THURSDAY, MAY 14 AT 8 P.M.



PATIENCE

Detective Bea Metcalf is intrigued by the autistic young woman in Criminal Records when Patience connects a supposed suicide to other cases. Patience jumps at the invitation to help, but she is hiding a big secret from Bea.

SUNDAY, JUNE 14 AT 8 P.M.



LUCK & LOVE: A RODEO STORY

A professional rodeo athlete, Tanner Aus is a professional bareback bronc rider, who has had to balance his grueling rodeo schedule with family life in small-town Minnesota. Get a glimpse inside the life of a star rodeo athlete.

SUNDAY, JUNE 21 AT 2:30 P.M.

LOCAL FAVORITES

Local programming matters because it tells the stories that feel like home. At Pioneer PBS, it is about your neighbors, your towns, and the experiences that shape this region. These stories keep local history alive, strengthen community pride, and make sure rural voices are seen, heard, and valued in a meaningful way.



POSTCARDS

THURSDAYS AT 7 P.M.

REPEATS SUNDAYS AT 7 P.M. AND MONDAYS AT 1:30 P.M.

Postcards is an Upper Midwest Regional Emmy Award-winning Pioneer PBS series that showcases the art, history, and cultural heritage of western Minnesota and beyond. Through compelling storytelling, it highlights local artists, veterans, and communities, bringing regional stories to life and connecting viewers to the people and traditions that shape the Upper Midwest.



PRAIRIE YARD & GARDEN

THURSDAYS AT 7:30 P.M.

REPEATS SATURDAYS AT 4 P.M. AND MONDAYS AT 1 P.M.

Prairie Yard & Garden explores gardening across the Upper Midwest, featuring experts, educators, and backyard growers. Each episode offers practical advice on horticulture and landscaping, while highlighting real gardens and innovative ideas, to help viewers create beautiful, sustainable outdoor spaces.



PRAIRIE SPORTSMAN

SUNDAYS AT 7:30 P.M.

REPEATS MONDAYS AT 12:30 P.M. AND SATURDAYS AT 7:30 P.M.

Prairie Sportsman, an Upper Midwest Regional Emmy Award-winning Pioneer PBS series, celebrates outdoor life across Minnesota. Hosted by Bret Amundson, it features hunting, fishing, conservation and environmental science, taking viewers on adventures while highlighting efforts to protect and restore natural resources across the region's lakes, rivers and prairies.



HISEERIE

SATURDAYS AT 8 P.M.

REPEATS MONDAYS AT NOON

Hiseerie is the newest program in the Pioneer PBS programming lineup, exploring the paranormal and macabre across Minnesota and the Midwest. From haunted locations and cryptids to chilling true crime stories, each episode investigates the region's dark history and unexplained mysteries, uncovering stories that continue to intrigue and unsettle communities today.

BECOME A Friend

LOCAL PROGRAMMING IS AT RISK!

GROW SOMETHING SPECIAL WITH PRAIRIE YARD & GARDEN!

Become a Friend of *Prairie Yard & Garden*—an exclusive community of passionate supporters nurturing and expanding one of the region's most beloved horticultural programs.



Friend of **PY&G**

pioneer.org/pyg/friends

INTO THE GREAT OUTDOORS, HUNTING, FISHING, HIKING AND CONSERVATION?

Consider becoming a friend of *Prairie Sportsman*. You'll receive exclusive member benefits and gifts with your contribution.



 Friends of **PRAIRIE SPORTSMAN**

pioneer.org/prairiesportsman/friends

LOVE THE PARANORMAL?

Hiseerie is the newest in our locally produced program line up and features paranormal investigations rooted in local history. For unedited investigations, behind-the-scenes content, and the chance to submit your own stories or vote on future topics, join us!



patreon.com/Hiseerie

A Q&A WITH LUANNE FONDELL

We're thrilled to welcome Luanne Fondell to our Board of Directors. Volunteers like LuAnne help us shape the future of our station.

What drew you to serve on the Pioneer PBS board at this point in your life? As a new board member, what are you most excited to learn or be part of?

I've been a public television viewer for most of my life. When our family moved from Alaska to rural Dawson in 1991, our children were delighted to find their familiar television friends with shows like *Reading Rainbow*, *Square One* and *3-2-1 Contact* while my husband and I continued our loyalty to *Masterpiece* and *Mystery!* (including the spooky opening animation by Edward Gorey). Serving on this board is a natural step for me to participate in something I've supported for years. As a new board member, I'm eager to learn even more about Pioneer PBS: its impact for viewers, its challenges and its future.

What unique perspective or experience do you bring to the board?

As a real estate specialist with an agricultural lender for twenty-five years, I regularly worked in ten counties within the Pioneer region. I also had the remarkable privilege of founding a non-profit arts organization, working with volunteers, audiences and artists. These distinct work experiences helped me meet so many wonderful people and gave me an appreciation for communities in western Minnesota.

How do you see local storytelling impacting communities across western Minnesota?

We all want to be seen and heard. Local storytelling is a powerful way to illuminate the variety of people in western Minnesota that are often unseen and unknown.

What challenges—and opportunities—do you think public media is facing right now?

There's no doubt that we are overwhelmed with media options. Perhaps the opportunity is to honor the viewers' choice – the viewer who chooses Pioneer PBS – by creating and delivering authentic, quality programming that resonates with this rural life. Local stories have undeniable appeal. Another obvious challenge is to rescue and restore funding from recent cuts. Local support is more critical than ever.

Why do you believe it's important to support local stations like Pioneer PBS?

I believe in the value of public television and how it informs and entertains us. To protect something of value, we need to support it – watch it, talk about it and support it financially.

What are some of your favorite types of programming?

I continue to marvel at the range of subjects in the *Postcards* series and enjoy watching stories of people and places in the Pioneer region. As a grandparent, I'm paying more attention to children's programming again! My classic favorites include *Masterpiece* and *Mystery!* Seriously wondering – will support groups be available at the conclusion of the final season of *Grantchester*?



LEARN MORE ABOUT GOVERNANCE AT PIONEER PBS



MAY

FRIDAY, MAY 1

- 7:00 p.m. **Washington Week with The Atlantic** TVRE
 7:30 p.m. **Firing Line with Margaret Hoover**
 8:00 p.m. **Ag PhD** Brian and Darren Hefty deliver practical insights to improve crop health, protect the environment, and increase yields efficiently.
- 8:30 p.m. **Market to Market**
 9:00 p.m. **Great Performances** *Now Hear This | The Iceland Sound* Journey across Iceland to uncover why this small nation produces extraordinary music.
- 10:00 p.m. **Great Performances** *Now Hear This: The Composer is Yoo* Follow host Scott Yoo's journey to compose a piece of music for the first time.
- 11:00 p.m. Amanpour and Company TVRE

SATURDAY, MAY 2

- 6:00 p.m. Classic Gospel *Gaither Vocal Band: Shine*
 7:00 p.m. **Samantha Brown's Places to Love** *Italy Part 2 - Modena* Samantha visits Modena and tours famed car brands including Ferrari and Stanguellini.
- 7:30 p.m. **Prairie Sportsman** *Hen Houses and Insect Surveys* Host Bret Amundson visits Delta Waterfowl to explore the role of hen houses in supporting duck populations and highlights University of Minnesota research tracking ticks and bumblebees.
- 8:00 p.m. **Hiseerie** *Campfire Stories: Part 1* Join us around the campfire for spooky and strange stories from across the Midwest.
- 8:30 p.m. **Culture Quest** *Iceland* TV14 Travel to the Reykjavik Art Festival and take in the breathtaking views of Iceland.
- 9:30 p.m. **Murder in the Mountains** *Firestarter* TV14
 10:30 p.m. The Caverns Sessions TVPG
 11:00 p.m. Austin City Limits TVPG

SUNDAY, MAY 3

- 6:00 p.m. **Antiques Roadshow** *Grants Farm, Hour 1* Meet us in St. Louis as ROADSHOW discovers memorable Missouri treasures at Grant's Farm!
- 7:00 p.m. **Postcards** *Little Crow Water Ski Team, Mother's Cupboard, Mario Callens* Veteran members of the Little Crow ski team share their show ski experiences. Mother's Cupboard in downtown New London offers restorative foods, teas, juices, and elixirs. On a farm near Minneota, musician Mario Callens creates his own brand of outlaw country.
- 7:30 p.m. **Prairie Sportsman** *Late Season Ice Fishing and Native Bait* Host Bret Amundson joins Drake Herd ice fishing near Alexandria, and Barry Thoele welcomes us to his farm, where he is raising native minnows and working to save the live bait industry in Minnesota.
- 8:00 p.m. **Call the Midwife** *Season 15, Episode 7* TV14
 9:00 p.m. **MaryLand on Masterpiece** *Episode 1* TV14 Sisters Becca and Rosaline receive unimaginable news about their mother.
- 10:00 p.m. **The Count of Monte Cristo on Masterpiece** *The Duel* TV14 As Edmond's revenge unfolds, Albert challenges him to a duel amid high stakes.
- 11:00 p.m. The Puzzle Lady TV14

MONDAY, MAY 4

- 7:00 p.m. **Antiques Roadshow** *Grants Farm, Hour 2* ANTIQUES ROADSHOW harvests hidden treasures at historic Grant's Farm in St. Louis, Missouri.
- 8:00 p.m. **The American Revolution** *The Soul of All America* TV14 The war drags on and moves to new theaters at sea, in Indian Country, and in the South.
- 10:00 p.m. **Consuelo Mack WealthTrack**
 10:30 p.m. BBC News TVRE
 11:00 p.m. Amanpour and Company TVRE

TUESDAY, MAY 5

- 7:00 p.m. **Finding Your Roots** *In the Blood* TVPG Uncover the roots of Michael Douglas and Lena Dunham.
- 8:00 p.m. **The American Revolution** *The Most Sacred Thing* TV14 Victory at Yorktown secures independence. Americans aspire for a more perfect union.
- 10:00 p.m. **Firing Line with Margaret Hoover**
 10:30 p.m. BBC News TVRE
 11:00 p.m. Amanpour and Company TVRE

WEDNESDAY, MAY 6

- 7:00 p.m. **Life on Earth: Attenborough's Greatest Adventure** TVPG Sir David Attenborough tells the story of the wildlife blockbuster that changed his life forever.
- 8:00 p.m. **NOVA** *Decoding the Universe: Cosmos* See how discoveries over the past 50 years have revolutionized our understanding of the universe.
- 9:00 p.m. **Shared Planet** *Open Spaces* TVPG
 10:00 p.m. **To the Contrary with Bonnie Erbe** TVRE
 10:30 p.m. BBC News TVRE
 11:00 p.m. Amanpour and Company TVRE

THURSDAY, MAY 7

- 7:00 p.m. **Postcards** *Michael Horse and Gina Hessburg* In Two Harbors, indigenous artist and well-known actor Michael Horse creates ledger art and jewelry, and in Minneapolis, patient advocacy artist Gina Hessburg uses art to illustrate what it's like to live as an undiagnosed patient with an invisible disease.
- 7:30 p.m. **Prairie Yard & Garden** *The Perennial Paradise - Paynesville* Before retiring, Rita and Jim Erickson ran "The Hosta Shed" in Paynesville, which started grew into a breathtaking landscape featuring hundreds of vibrant perennials. Host Mary Holm gets a tour along with gardening secrets to inspire fellow enthusiasts.
- 8:00 p.m. **Home is a Hotel** TVPG
 9:00 p.m. **Papa Ray's Vintage Vinyl Roadshow** *Memphis* TVPG Get a look at some of the record stores keeping traditions alive in Memphis.
- 9:30 p.m. **Austin City Limits** *Pat Benatar & Neil Giraldo* TVPG
 10:30 p.m. BBC News TVRE
 11:00 p.m. Amanpour and Company TVRE

FRIDAY, MAY 8

- 7:00 p.m. **Washington Week with The Atlantic** TVRE
 7:30 p.m. **Firing Line with Margaret Hoover**
 8:00 p.m. **Ag PhD**
 8:30 p.m. **Market to Market**
 9:00 p.m. **Great Performances** *Suffs* TV14 Witness the American women's suffrage movement in this Tony-winning Broadway musical.
- 11:30 p.m. **Prairie Yard & Garden**

SATURDAY, MAY 9

- 6:00 p.m. Classic Gospel *Issacs: Praise & Worship- More Than a Hallow Hallelujah*
- 7:00 p.m. **Samantha Brown's Places to Love** *Art & Artisans*
 7:30 p.m. **Prairie Sportsman** *Late Season Ice Fishing and Native Bait*
- 8:00 p.m. **Hiseerie** *Farrar Elementary School* Investigate the reportedly haunted Farrar Elementary School in central Iowa, now owned by YouTubers Sam and Colby, and explore its history through a firsthand paranormal investigation.
- 8:30 p.m. **Culture Quest** *Duluth, Minnesota* TV14 Learn how a new generation of entrepreneurs reimagined Duluth, Minnesota.
- 9:30 p.m. **Murder in the Mountains** *Rotten Eggs* TV14
 10:30 p.m. The Caverns Sessions TVPG
 11:00 p.m. Austin City Limits TVPG

SUNDAY, MAY 10

- 6:00 p.m. **Antiques Roadshow** *Grants Farm, Hour 2*
 7:00 p.m. **Postcards** *Michael Horse and Gina Hessburg*
 7:30 p.m. **Prairie Sportsman** *Muzzleloaders, Mussels, and Mushrooms* Host Bret Amundson joins veterans on a muzzleloader deer hunt with Warriors and Walleyes, highlights mussel relocation on the Mississippi River, and explores oyster mushrooms with Nicole Zempel.
- 8:00 p.m. **Call the Midwife** *Season 15, Episode 8* TV14
 9:00 p.m. **MaryLand on Masterpiece** *Episode 2* TV14 As new revelations emerge, the sisters deal with the fallout from their mother's death.
- 10:00 p.m. **The Count of Monte Cristo on Masterpiece** *The Last Two* TV14 Follow the lives of the noble Crawley family and their staff.
- 11:00 p.m. The Puzzle Lady TV14

MONDAY, MAY 11

- 7:00 p.m. **Antiques Roadshow** *Grants Farm, Hour 3* Catch a crop of ROADSHOW discoveries at scenic Grant's Farm in St. Louis, Missouri.
- 8:00 p.m. **Antiques Roadshow** *Santa Fe's Museum Hill, Hour 3* It's antique treasures galore at Santa Fe's Museum Hill with a \$100,000 to \$200,000 find!
- 9:00 p.m. **Independent Lens** *Natchez* TV14 Tourism, memory and race collide in a Mississippi town built on antebellum nostalgia.
- 10:30 p.m. BBC News TVRE
- 11:00 p.m. Amanpour and Company TVRE

TUESDAY, MAY 12

- 7:00 p.m. **Finding Your Roots** *Far from Home* TVPG Cyndi Lauper, Jamie Chung and Danny Trejo discover their family tree with Henry Louis Gates.
- 8:00 p.m. **Finding Your Roots** *Larger Than Life* TVPG Henry Louis Gates Jr. connects Lea Salonga and Amanda Seyfried to their dramatic ancestors.
- 9:00 p.m. **Frontline** *The President vs. The Fed* TVRE
- 10:00 p.m. **Firing Line with Margaret Hoover**
- 10:30 p.m. BBC News TVRE
- 11:00 p.m. Amanpour and Company TVRE

WEDNESDAY, MAY 13

- 7:00 p.m. **Nature** *Attenborough and the Sea Dragon* TVPG The discovery of the Ichthyosaur, a fish lizard that lived during the age of dinosaurs, is explored.
- 8:00 p.m. **NOVA** *Decoding The Universe: Quantum* Discover the world of the subatomic realm in the quantum universe.
- 9:00 p.m. **Shared Planet** *Forests* TVPG
- 10:00 p.m. **To The Contrary with Bonnie Erbe** TVRE
- 10:30 p.m. BBC News TVRE
- 11:00 p.m. Amanpour and Company TVRE

THURSDAY, MAY 14

- 7:00 p.m. **Postcards** *Bike Clubs and Caroline Naomi* In Rochester, We Bike Rochester and Pata de Perro provide bikes and maintenance resources to the community, while in the Twin Cities, musician Carolyn Naomi creates music inspired by her Nigerian heritage.
- 7:30 p.m. **Prairie Yard & Garden** *Plants Beautiful - Parkers Prairie* Host Mary Holm visits Plants Beautiful Nursery near Parkers Prairie, where owner Lowell Dittberner shows how Japanese-style topiaries can be grown in Minnesota and shares care tips.
- 8:00 p.m. **Minnesota and the American Story** *Revolutionary Roots* Produced by member stations of the Minnesota Public Television Association, this statewide collaboration highlights the citizens, families, and communities who continue to steward America's founding ideals. Their stories remind us that the Revolution was not simply a moment in history, but a promise passed down through generations.
- 9:00 p.m. **Papa Ray's Vintage Vinyl Roadshow** *Florida* TVPG
- 9:30 p.m. **Austin City Limits** *Gary Clark Jr./Black Pumas* TVPG
- 10:30 p.m. BBC News TVRE
- 11:00 p.m. Amanpour and Company TVRE

FRIDAY, MAY 15

- 7:00 p.m. **Washington Week with The Atlantic** TVRE
- 7:30 p.m. **Firing Line with Margaret Hoover**
- 8:00 p.m. **Ag PhD**
- 8:30 p.m. **Market to Market**
- 9:00 p.m. **Great Performances** *Top Hat* TVPG Enjoy this musical inspired by the 1935 movie musical starring Fred Astaire and Ginger Rogers.
- 11:30 p.m. **Papa Ray's Vintage Vinyl Roadshow** TVPG

SATURDAY, MAY 16

- 6:00 p.m. **Classic Gospel** *Brothers of the Heart: Listen to the Music*
- 7:00 p.m. **Samantha Brown's Places to Love** *Tampa, Florida* Samantha explores Tampa's Ybor City, learning its Cuban cigar heritage at J.C. Newman.
- 7:30 p.m. **Prairie Sportsman** *Muzzleloaders, Mussels, and Mushrooms*
- 8:00 p.m. **Hiseerie** *Campfire Stories: Part 4* Join us around the campfire for spooky and strange stories from cryptids to odd town history across the Midwest.

- 8:30 p.m. **Culture Quest** *Broome, Australia* TV14 You'll never look at a pearl the same way again after exploring Australia's remote northwest coast.
- 9:30 p.m. **Murder in the Mountains** *Break It Up* TV14
- 10:30 p.m. **The Caverns Sessions** TVPG
- 11:00 p.m. **Austin City Limits** TVPG

SUNDAY, MAY 17

- 6:00 p.m. **Antiques Roadshow** *Grants Farm, Hour 3*
- 7:00 p.m. **Postcards** *Bike Clubs and Caroline Naomi*
- 7:30 p.m. **Prairie Sportsman** *On The Great River and Beefsteak Fungus* Host Bret Amundson fishes the Mississippi in downtown St. Paul, visits St. Anthony Falls Laboratory in Minneapolis to see how it harnesses the Mississippi for scientific research, and learns about the beefsteak fungus with Nicole Zempel.
- 8:00 p.m. **Lucy Worsley's Royal Myths & Secrets** *Elizabeth I: The Warrior Queen* TVPG Explore how Elizabeth I's image as a warrior queen shaped British national identity for centuries.
- 9:00 p.m. **MaryLand on Masterpiece** *Episode 3* TV14 Things comes to a head as Richard and Jim arrive at the Isle of Man.
- 10:00 p.m. **Downton Abbey Season 1 on Masterpiece** *Downton Abbey - Part 1* TVPG When the Titanic sinks, Lord Grantham loses his immediate heirs, throwing Downton Abbey into turmoil.
- 11:30 p.m. **Social Security: 90 Years Strong**

MONDAY, MAY 18

- 7:00 p.m. **Antiques Roadshow** *Junk in the Trunk 15*
- 8:00 p.m. **Antiques Roadshow** *Cheekwood Estate & Gardens, Hour 1* Watch charming appraisals at Cheekwood Estate and Gardens, like one valued at up to \$80,000!
- 9:00 p.m. **Independent Lens** *Light of the Setting Sun* TV14 A filmmaker confronts her Chinese family's trauma and questions whether the cycle can end.
- 10:30 p.m. BBC News TVRE
- 11:00 p.m. Amanpour and Company TVRE

TUESDAY, MAY 19

- 7:00 p.m. **Finding Your Roots** *Stranger Than Fiction* TV14 Henry Louis Gates Jr. reveals inspiring ancestors of novelist Amy Tan and poet Rita Dove.
- 8:00 p.m. **American Masters** *Janis Ian: Breaking Silence* TV14 Examine the captivating journey of trailblazing artist, Janis Ian.
- 10:00 p.m. **Firing Line with Margaret Hoover**
- 10:30 p.m. BBC News TVRE
- 11:00 p.m. Amanpour and Company TVRE

WEDNESDAY, MAY 20

- 7:00 p.m. **Nature** *Attenborough's Wonder of Song* TVPG As humankind gets noisier, the beautiful songs of the humpback whale are being drowned out.
- 8:00 p.m. **NOVA** *When Whales Could Walk* TVPG Giant fossils reveal new secrets of how whales evolved.
- 9:00 p.m. **Shared Planet** *Waters* TVPG
- 10:00 p.m. **To the Contrary with Bonnie Erbe** TVRE
- 10:30 p.m. BBC News TVRE
- 11:00 p.m. Amanpour and Company TVRE

THURSDAY, MAY 21

- 7:00 p.m. **Postcards** *Wanda Bahmet and Clay Fulton and the Lost 40* Wanda Bahmet shares her story of surviving a WWII Nazi work camp and her life in the United States after the war, while in Rochester, Clay Fulton and the Lost 40 host a music celebration at the Historic Chateau Theatre.
- 7:30 p.m. **Prairie Yard & Garden** *Living Legacy Gardens - Staples* At Living Legacy Gardens in Staples, Mary Holm tours with garden manager Tammy Rick, who highlights the garden's educational mission and shares which plants thrive in Minnesota's Zone 3.
- 8:00 p.m. **Your Legislators**
- 9:00 p.m. **Papa Ray's Vintage Vinyl Roadshow** *Jamaica* TVPG Visit some incredible record stores in Jamaica, including Rockers International Records.
- 9:30 p.m. **Austin City Limits** *Jelly Roll/The War and Treaty* TVPG
- 10:30 p.m. BBC News TVRE
- 11:00 p.m. Amanpour and Company TVRE

MAY

FRIDAY, MAY 22

- 7:00 p.m. **Washington Week with The Atlantic** TVRE
 7:30 p.m. **Firing Line with Margaret Hoover**
 8:00 p.m. **Ag PhD**
 8:30 p.m. **Market to Market**
 9:00 p.m. **Great Performances** *An Evening with Nicole Scherzinger* TVPG
 10:30 p.m. **Travel Detective** TVPG
 11:00 p.m. **Amanpour and Company** TVRE

SATURDAY, MAY 23

- 6:00 p.m. Classic Gospel *Sweet Hymns of Fellowship*
 7:00 p.m. **Samantha Brown's Places to Love** *The Food Special, Part 3* Samantha samples global treats from Costa Rica, Berlin, North Carolina and New Orleans.
 7:30 p.m. **Prairie Sportsman** *On The Great River and Beefsteak Fungus*
 8:00 p.m. **Hiseerie** *Malvern Manor: Part 1* In this two-part season finale, we complete a 48-hour lock-in at Malvern Manor in Iowa, explore its history with owner Josh Heard, test new paranormal tech with inventor Paul Kocsis, and welcome guests from Farrar Elementary School.
 8:30 p.m. **Culture Quest** *Nevada* TV14 Explore how Nevadans have carved their own paths as they shaped their distinctive cultures.
 9:30 p.m. **Murder in the Mountains** *Old Wounds* TV14
 10:30 p.m. **The Caverns Sessions** TVPG
 11:00 p.m. **Austin City Limits** TVPG

SUNDAY, MAY 24

- 6:00 p.m. **Antiques Roadshow** *Junk in the Trunk 15*
 7:00 p.m. **Postcards** *Wanda Bahmet and Clay Fulton and the Lost 40*
 7:30 p.m. **Prairie Sportsman** *A Decade of Minnesota and Pristine to Green* Host Bret Amundson reflects on 10 years of Prairie Sportsman, revisiting favorite moments, while researchers study unexpected cyanobacteria blooms in Minnesota's northern lakes.
 8:00 p.m. **Greater Good: Mission of a Minnesota Family** Bud and Paul Nakasone, Army veterans, dedicated their lives to national service. Bud witnessed the Pearl Harbor attack; Paul was at the Pentagon on 9/11. These events shaped their distinguished military careers, reflecting a legacy of commitment and sacrifice rooted in family bonds and Minnesota traditions.
 8:30 p.m. **National Memorial Day Concert 2026** Joe Mantegna and Gary Sinise once again host the National Memorial Day Concert.
 10:00 p.m. **Downton Abbey Season 1 on Masterpiece** *Downton Abbey - Part 2* TVPG Mary entertains three suitors. The shocking former life of Carson, the butler, is unmasked.
 11:30 p.m. **Sage Wisdom** West

MONDAY, MAY 25

- 7:00 p.m. **Antiques Roadshow** *Celebrating Asian-Pacific Heritage* Travel with ROADSHOW to watch incredible items with Asian and Pacific Islands origins!
 8:00 p.m. **Antiques Roadshow** *Cheekwood Estate & Gardens, Hour 2* ROADSHOW visits Music City for an astonishing \$75,000 to \$85,000 find!
 9:00 p.m. **Independent Lens** *Third Act* TV14 Father and son filmmakers use their shared medium to explore art, trauma and legacy.
 10:30 p.m. **BBC News** TVRE
 11:00 p.m. **Amanpour and Company** TVRE

TUESDAY, MAY 26

- 7:00 p.m. **Finding Your Roots** *Dreamers One and All* TVPG Henry Louis Gates Jr. traces the ancestry of actor Sharon Stone and model Chrissy Teigen.
 8:00 p.m. **Seabiscuit: American Experience**
 9:00 p.m. **Frontline** *The War Cabinet* TVRE
 10:30 p.m. **BBC News** TVRE
 11:00 p.m. **Amanpour and Company** TVRE

WEDNESDAY, MAY 27

- 7:00 p.m. **Nature** *Attenborough and the Jurassic Sea Monster* TVPG Sir David Attenborough and experts unearth the fossil of the largest Jurassic predator ever known.
 8:00 p.m. **NOVA** *Great Mammoth Mystery* TVPG An excavation of a site in southwest England reveals traces of ancient mammoths and Neanderthals.

- 9:00 p.m. **Secrets of the Dead** *China's Bronze Kingdom* TVPG Explore China's bronze kingdom in the mountains of Sichuan.
 10:00 p.m. **To the Contrary with Bonnie Erbe** TVRE
 10:30 p.m. **BBC News** TVRE
 11:00 p.m. **Amanpour and Company** TVRE

THURSDAY, MAY 28

- 7:00 p.m. **Postcards** *Carpet Booth Studios and Evelyn Johnson* Audio engineer Zach Zurn works with musical artists from the Midwest at Carpet Booth Studios in Rochester, and, in Willmar, artist Evelyn Johnson creates multi-dimensional pieces honoring people of the past.
 7:30 p.m. **Prairie Yard & Garden** *The Plant Addict - Fargo* Plant enthusiast Charles Elhard is wholly devoted to his passion, fitting the dictionary definition of a plant addict.
 8:00 p.m. **America's Hidden Coast: Mississippi** TVPG Peter helps maintain a manmade beach and rehab a dolphin.
 8:30 p.m. **America's Hidden Coast: Mississippi** TVPG Peter gets to work at Walter Anderson Museum and Horn Island.
 9:00 p.m. **Hometowns** *Floyd County, Virginia* Discover the mountain towns of Floyd County, Virginia.
 9:30 p.m. **Austin City Limits** *Chris Stapleton* TVPG
 10:30 p.m. **BBC News** TVRE
 11:00 p.m. **Amanpour and Company** TVRE

FRIDAY, MAY 29

- 7:00 p.m. **Washington Week with The Atlantic** TVRE
 7:30 p.m. **Firing Line with Margaret Hoover**
 8:00 p.m. **Ag PhD**
 8:30 p.m. **Market to Market**
 9:00 p.m. **The State of Polka** Polka music once dominated dance halls and radio stations across the country. But which state reigns as the one true State of Polka? This toe-tapping, fun-loving documentary surveys the polka music scene in the Land of 10,000 Accordions.
 9:30 p.m. **Sympathetic Strings** Learn about the journey of the Hardanger Fiddle from Norway to Minnesota, and the people that kept the tradition alive.
 10:00 p.m. **The Devil's Instrument** The history, lore, craft and haunting music of the Hardanger fiddle are explored.
 10:30 p.m. **Country Music: Made in Minnesota**
 11:00 p.m. **Amanpour and Company** TVRE

SATURDAY, MAY 30

- 6:00 p.m. Classic Gospel *Ronnie Booth: Living Legacy*
 7:00 p.m. **Curious Traveler** *Curious Antarctica, Part 1* Explore Antarctica and the wildlife that lives there. Discover when it was lush green and not icy.
 7:30 p.m. **Prairie Sportsman** *A Decade of Minnesota and Pristine to Green*
 8:00 p.m. **Hiseerie** *Malvern Manor: Part 2* In part two of this two-part season finale, we complete a 48-hour lock-in at Malvern Manor in Iowa, explore its history with owner Josh Heard, test new paranormal tech with inventor Paul Kocsis, and welcome guests from Farrar Elementary School.
 8:30 p.m. **Culture Quest** *Iceland* TV14
 9:30 p.m. **Murder in the Mountains** *In The Dungeon* TV14
 10:30 p.m. **The Caverns Sessions** TVPG
 11:00 p.m. **Austin City Limits** TVPG

SUNDAY, MAY 31

- 6:00 p.m. **Antiques Roadshow** *Celebrating Asian-Pacific Heritage*
 7:00 p.m. **Postcards** *Carpet Booth Studios and Evelyn Johnson*
 7:30 p.m. **Prairie Sportsman** *Fast Forage in the Kitchen: A Prairie Sportsman Special* Forager Nicole Zempel highlights how to identify and harvest the bounty of the Juniper tree and then uses foraged ingredients to prepare fish, wild game, teas and tinctures.
 8:00 p.m. **Margaret: The Rebel Princess Part One** TVPG Discover how Princess Margaret's life and loves redefined society's image of the modern princess.
 9:00 p.m. **Margaret: The Rebel Princess Part Two** TV14 Peek in on the marriage of Princess Margaret and Antony Armstrong-Jones.
 10:00 p.m. **Downton Abbey Season 1 on Masterpiece** *Downton Abbey - Part 3* TVPG Growing into his role as heir, Matthew brings out the bitter rivalry between Mary and Edith.
 11:30 p.m. **A Life in Motion: The Alec Majerus Story**

MONDAY, JUNE 1

- 7:00 p.m. **Antiques Roadshow** *Cheekwood Estate & Gardens, Hour 3* New noteworthy Nashville appraisals at Cheekwood Estate and Garden. One is up to \$50,000!
- 8:00 p.m. **Antiques Roadshow** *Idaho Botanical Garden Hour 1* Find out which treasure is valued between \$50,000 to \$80,000 when the team travels to Idaho.
- 9:00 p.m. **Breakthrough: The Ideas That Changed The World** *The Telescope* TVPG Meet the brilliant minds responsible for creating the telescope from Galileo to Edwin Hubble.
- 10:00 p.m. **Consuelo Mack WealthTrack**
- 10:30 p.m. BBC News TVRE
- 11:00 p.m. Amanpour and Company TVRE

TUESDAY, JUNE 2

- 7:00 p.m. **Price of Paradise** TVPG Explore a chapter of Hawaiian history that reflects on the erasure of cultural identity.
- 8:00 p.m. **Playing Haydn for the Angel of Death** Travel to Iceland to hear legendary Minnesota poet Bill Holm's work set to music.
- 8:30 p.m. **A Life in Motion: The Alec Majerus Story** Professional skateboarder and X Games medalist Alec Majerus, who grew up skating in Rochester, Minnesota, shares his journey in *A Life in Motion* as he reflects on the challenges and successes of his career.
- 9:00 p.m. **Iconic America: Our Symbols and Stories with David Rubenstein** *The Gadsden Flag* TV14 Discover how the Gadsden Flag has been co-opted by a variety of Americans over its long history.
- 10:00 p.m. **Firing Line with Margaret Hoover**
- 10:30 p.m. BBC News TVRE
- 11:00 p.m. Amanpour and Company TVRE

WEDNESDAY, JUNE 3

- 7:00 p.m. **What's The Story, Wishbone?** TVPG
- 8:30 p.m. **RHD: Hidden Diagnosis** TVPG Explore the impact of right hemisphere brain damage and the struggles and achievements of survivors.
- 9:00 p.m. **Wired for Connection** TVPG Cutting-edge science reveals how isolation can harm us both mentally and physically.
- 10:00 p.m. **To the Contrary with Bonnie Erbe** TVRE
- 10:30 p.m. BBC News TVRE
- 11:00 p.m. Amanpour and Company TVRE

THURSDAY, JUNE 4

- 7:00 p.m. **Postcards** *Catarina Orellana, New London Food Co-Op, Help Tuck Them In* In Willmar, illustrator Catarina Orellana digitally paints book covers. The New London Food Co-op offers high quality, responsibly sourced groceries. A volunteer organization in Tracy provides beds for children in need.
- 7:30 p.m. **Prairie Yard & Garden** *The Honeyberry Farm - Bagley* Honeyberries can, in fact, thrive in Minnesota and the Upper Midwest. Bernis Ingvalson confirms this at her farm, Honeyberry USA near Bagley.
- 8:00 p.m. **Becoming American: Philadelphia's Story** TVPG Explore the founding of the United States through the lens of Philadelphia, America's first capital.
- 9:00 p.m. **Hometowns** *Townsend, Tennessee* Townsend, Tennessee isn't flashy, but it's a place where time slows down.
- 9:30 p.m. **Austin City Limits** *Brittany Howard* TVPG
- 10:30 p.m. BBC News TVRE
- 11:00 p.m. Amanpour and Company TVRE

FRIDAY, JUNE 5

- 7:00 p.m. **Washington Week with The Atlantic** TVRE
- 7:30 p.m. **Firing Line with Margaret Hoover**
- 8:00 p.m. **Ag PhD**
- 8:30 p.m. **Market to Market**
- 9:00 p.m. **Craft in America** *East* TV14 Explore the intersection of history and contemporary craft in the eastern region of the U.S.
- 10:00 p.m. **Craft in America** *West* TVPG Celebrates the continuum of heritage and the handmade in the American West.
- 11:00 p.m. Amanpour and Company TVRE

SATURDAY, JUNE 6

- 6:00 p.m. **Classic Gospel** *Mark Lowry: There Is Hope*
- 7:00 p.m. **Curious Traveler** *Curious Antarctica, Part 2* This episode covers the explorers of Antarctica. Who made it there first?
- 7:30 p.m. **Prairie Sportsman** *Fast Forage in the Kitchen: A Prairie Sportsman Special*
- 8:00 p.m. **Hiseerie** *The Villisca Axe Murder House Part 1* The season opens with a two-part investigation of the infamous Villisca Axe Murder House. Part one explores the crime, suspects, and begins the investigation in the home's guest room.
- 8:30 p.m. **Culture Quest** *Duluth, Minnesota* TV14
- 9:30 p.m. **Murder in the Mountains** *Redemption* TV14
- 10:30 p.m. **The Caverns Sessions** TVPG
- 11:00 p.m. **Austin City Limits** TVPG

SUNDAY, JUNE 7

- 6:00 p.m. **Antiques Roadshow** *Cheekwood Estate & Gardens, Hour 3*
- 7:00 p.m. **Postcards** *Catarina Orellana, New London Food Co-Op, Help Tuck Them In*
- 7:30 p.m. **Prairie Sportsman** *Rainy River Sturgeon* Host Bret Amundson joins Kevin Hinrichs of the Royal Dutchman Resort to battle monster sturgeon on the Rainy River, and researchers work to better understand the range and population of this unique prehistoric fish.
- 8:00 p.m. **Victoria and Albert: The Wedding** *Episode: 1* TVPG Experts prepare to reconstruct the wedding that changed history and uncover astonishing details.
- 9:00 p.m. **Victoria & Albert: The Wedding** *Episode: 2* TVPG Witness the most accurate reconstruction of Victoria and Albert's wedding ever staged.
- 10:00 p.m. **Downton Abbey Season 1 on Masterpiece** *Downton Abbey - Part 4* TVPG The heir crisis at Downton Abbey takes an unexpected turn. Anna unearths Bates' mysterious past.
- 11:30 p.m. **The Caverns Sessions** TVPG

MONDAY, JUNE 8

- 7:00 p.m. **Antiques Roadshow** *Never Seen That Before!* Discover finds that even our experts hadn't seen prior to these magical ROADSHOW moments!
- 8:00 p.m. **Antiques Roadshow** *Kids Stuff* Take a trip down memory lane for playful ROADSHOW finds that bring out the child in us!
- 9:00 p.m. **If I Could Stay/ Si Puderia Quedarme** TVPG Explore this moving call to action about the strength of community for two undocumented mothers.
- 10:00 p.m. **Consuelo Mack WealthTrack**
- 10:30 p.m. BBC News TVRE
- 11:00 p.m. Amanpour and Company TVRE

TUESDAY, JUNE 9

- 7:00 p.m. **Finding Your Roots** *American Dreams* TVPG Henry Louis Gates Jr. helps America Ferrera and Darren Criss uncover their immigrant roots.
- 8:00 p.m. **Woodstock: Three Days That Defined A Generation: American Experience** TVM This film brings the three-day concert to life through the voices of those who were at Woodstock.
- 10:00 p.m. **Firing Line with Margaret Hoover**
- 10:30 p.m. BBC News TVRE
- 11:00 p.m. Amanpour and Company TVRE

WEDNESDAY, JUNE 10

- 7:00 p.m. **Nature** *Museum Alive with David Attenborough* TVPG Sir David Attenborough takes us through London's world-famous Natural History Museum.
- 8:00 p.m. **NOVA** *Alaskan Dinosaurs* TVPG Intrepid paleontologists discover that dinosaurs thrived in the cold and dark of the Arctic Circle.
- 9:00 p.m. **Secrets of the Dead** *Ben Franklin's Bones* TV14 Bones found in Benjamin Franklin's British residence were used in an illegal anatomy school.
- 10:00 p.m. **To The Contrary with Bonnie Erbe** TVRE
- 10:30 p.m. BBC News TVRE
- 11:00 p.m. Amanpour and Company TVRE

CORNERSTONE BUILDERS

Every great organization depends on a core of faithful patrons whose commitment surpasses that of the customary gift. At Pioneer PBS, it is the Cornerstone Builders. These members are very aware of the impact and the tremendous potential Pioneer PBS has for enriching lives in our shared community and in our region for over 60 years.

Barbara Beasley
Minneapolis

Gary Bartlett
Parkers Prairie

Roger Boleman
Morris

Mary Brown
Montevideo

Lori Carter
Granite Falls

Doris Cogelow
Willmar

Peggy Crosby & Dave Pederson
Dawson

Lauren Davis
Alexandria

Noel Dunn
Maplewood

Leo P. Flynn Estate
Milbank, South Dakota

Shirley Fihn
Detroit Lakes

Van & Sue Gooch
Farwell

Roberta Hintz
New Ulm

Judith Hintze
Windom

Mildred K. Huggins
Brookings, South Dakota

LaMont & Diane Jacobson
Sacred Heart

Andy Kaufman
Appleton

Pat Kubly
Granite Falls

Steven & Peg Lange
Pipestone

Dave & Sue Lorence
Lowry

Curt & Jeanette Olson
Granite Falls

Mark Olson & Bonnie Bohm
Willmar

Leland & Norma Raske
Marshall

Mary Kathryn Robbins
Wadena

Ralph & Marilyn Rolland
Carlos

Nathan Rugroden
St. Paul

Marlin Schenck
Minneapolis

Nancy Straw
Fort Myers, Florida

Francis Barry Schreiber
Zimmerman

Mark and Lori West
Alexandria

Linda Wing
Slayton

Several Anonymous Donors

Learn how you can make a difference for Pioneer PBS by becoming a Cornerstone Builder at 800-726-3178 or pioneer.org/majorgifts.



MEMORIAL & HONORARIUM GIFTS

Honor someone special with a gift that gives back. Memorial gifts offer comfort in times of loss, while honorarium gifts celebrate meaningful moments. Both support a cause close to your heart. Learn more at pioneer.org/memorialgifts or contact our membership team at 800-726-3178.

In memory of Dan Kleven
Susan Malecek
Marybeth Block
Paul & Janelle Higdem
Tamara & Craig Baker

A LEGACY OF GENEROSITY

Leo P. Flynn's life is a story of resilience, dedication, and quiet generosity. Born June 3, 1908, in Larchwood, Iowa, Flynn overcame a childhood spinal injury that affected his mobility but never limited his ambition. Raised in a hardworking Irish immigrant family, he later moved to a farm near Milbank, South Dakota, where he developed the work ethic that defined his life.

After putting himself through Creighton University, Flynn built a distinguished legal career, serving as Grant County State's Attorney and later as United States District Attorney. Yet beyond his professional accomplishments, he was known for something even more enduring—his commitment to community.

In his later years, Flynn became a remarkable philanthropist, supporting schools, churches, hospitals, and organizations throughout the region, including Pioneer PBS. Often called the "Christmas Angel," he gave not for recognition, but because he believed in strengthening the place he called home.

Leo P. Flynn is the perfect example of someone who believed in sharing his wealth for the betterment of his community and the region. We celebrate his legacy.

We are deeply grateful for Leo P. Flynn's generosity and support. His legacy is a powerful reminder that one person can make a lasting difference.

If you are inspired to create a legacy of your own, we invite you to connect with Pioneer PBS.

Contact our membership team at 800-726-3178 or visit pioneer.org to learn how your support can continue telling the stories of our region like Leo's support has in the past and continues to for generations to come.



**YOUR LEGACY
STARTS HERE**



PHOTO COURTESY OF WILDLIFE REHABILITATION CENTER OF MINNESOTA

Pioneer  PBS

WE ARE
yours



PHOTO COURTESY OF WILDLIFE REHABILITATION CENTER OF MINNESOTA

- *Prairie Sportsman* hit the road to capture outdoor adventure across Minnesota—from ice fishing and river outings to wildlife care and conservation—bringing viewers closer to the people, places, and stories that define the region's natural resources and traditions.
- *Postcards* interviewed the owner and brewer Eric Geier at Bad Habit Brewing in Saint Joseph, Minnesota, for an upcoming episode.
- The Minnesota River Valley CEO program group toured the Pioneer PBS station and visited with station leadership to learn what it takes to run a television station.
- The *Your Legislators* panel discusses the 2026 Legislative session.
- A Good Neighbor Award from MPTA is presented to Senator Lang. Board member LaMont Jacobson joining in the presentation.
- Cornerstone Builder Barry Schreiber visits Pioneer PBS and holds an Upper Midwest Regional Emmy for the *Held in Minnesota* documentary he played a role in.
- President & GM Shari Lamke and business specialist Yolanda Cisneros visited with Senator Gary Dahms, Rep. Paul Torkelson and Rep. Chris Swedzinski during Public Media Day at the Capitol.



 **YOUR LEGISLATORS**



JUNE

THURSDAY, JUNE 11

- 7:00 p.m. **Postcards** *Ornie Alness, Rustic Designs Flower Farm, Dave Roth* Ornie Alness reminisces on his WWII U.S. Navy tour and life as a farmer in Clarkfield. Rustic Designs Flower Farm in Belgrade grows pick-your-own flowers. In Madison, veteran Dave Roth shares his music and family history with the Madison Bottling Company.
- 7:30 p.m. **Prairie Yard & Garden** *Legacy of the Lakes Museum - Alexandria* At Alexandria's Legacy of the Lakes Museum, Kaci Johnson shows Mary Holm unique watercraft like a Heliboat and amphibious car, while Carol Swenson highlights the museum's display garden.
- 8:00 p.m. **Wheels "Classics & Collections" 1st Gear** Since the creation of the wheel around 3,500 B.C. there have been steady improvements and uses for the wheel. Discover wheel stories far and wide at regional car shows, threshing bees, farm shows and more.
- 9:00 p.m. **Hometowns** *Ridgway, Pennsylvania* Explore Ridgway, a hidden gem that's a small town big on adventure.
- 9:30 p.m. **Austin City Limits** *ACL 11th Annual Hall of Fame Honors My Morning Jacket* TVPG Rock legends My Morning Jacket are inducted into the ACL Hall of Fame by Cameron Crowe.
- 10:30 p.m. BBC News TVRE
- 11:00 p.m. Amanpour and Company TVRE

FRIDAY, JUNE 12

- 7:00 p.m. **Washington Week with The Atlantic** TVRE
- 8:00 p.m. **Ag PhD**
- 8:30 p.m. **Market to Market**
- 9:00 p.m. **American Masters** *Janis Ian: Breaking Silence* TV14
- 11:00 p.m. Amanpour and Company TVRE

SATURDAY, JUNE 13

- 6:00 p.m. Classic Gospel *Dennis Quaid: Fallen*
- 7:00 p.m. **Curious Traveler** *Curious Alhambra & Malaga, Spain* Discover the mysterious areas of Alhambra and Malaga in Spain.
- 7:30 p.m. **Prairie Sportsman** *Rainy River Sturgeon*
- 8:00 p.m. **Hiseerie** *The Villisca Axe Murder House Part 2* We return to the The Villisca Axe Murder House in part two. We take the investigation upstairs and debrief on our experiences during and after our night in Villisca.
- 8:30 p.m. **Radio Bristol's Farm and Fun Time** *Johnny Long, Darrell Scott*
- 9:30 p.m. **Grantchester On Masterpiece** *Season 10, Episode 1* TV14 Easter celebrations in Grantchester take a somber turn with a suspicious death.
- 10:30 p.m. The Caverns Sessions TVPG
- 11:00 p.m. Austin City Limits TVPG

SUNDAY, JUNE 14

- 6:00 p.m. **Antiques Roadshow** *Never Seen That Before!*
- 7:00 p.m. **Postcards** *Ornie Alness, Rustic Designs Flower Farm, Dave Roth*
- 7:30 p.m. **Prairie Sportsman** *Along The Gunflint Trail* Host Bret Amundson travels Minnesota's iconic gunflint trail to visit fishing guide Jessica Berg-Collman of Seagull Creek Fishing Camp. He also stops in at the Chik-Wauk Museum and Nature Center to experience the history, culture and wildlife of the boundary waters.
- 8:00 p.m. **Patience** *Vampire* TV14
- 9:00 p.m. **Grantchester on Masterpiece** TV14
- 10:00 p.m. **Downton Abbey Season 2 on Masterpiece** *Part One* TV14 Two years into World War I, Downton Abbey is in turmoil as Matthew and other young men go to war.

MONDAY, JUNE 15

- 7:00 p.m. **Antiques Roadshow** *Crystal Bridges Museum of American Art, Hour 1* Kick off season 29 of all-new ROADSHOW at Crystal Bridges Museum of American Art!
- 8:00 p.m. **Antiques Roadshow** *Crystal Bridges Museum of American Art, Hour 2* Discover amazing treasures in Arkansas including an Elvis Presley-signed ice cream display.
- 9:00 p.m. **The Last Twins** TV14 It's the never-before-told story of an unsung hero of the Holocaust, Erno 'Zvi' Spiegel.
- 10:30 p.m. BBC News TVRE
- 11:00 p.m. Amanpour and Company TVRE

TUESDAY, JUNE 16

- 7:00 p.m. **Finding Your Roots** *Great Migrations* TVPG Henry Louis Gates Jr. helps Wiz Khalifa and Sanaa Lathan trace their ancestors.
- 8:00 p.m. **Becoming Katharine Graham** TV14
- 10:00 p.m. **Firing Line with Margaret Hoover**
- 10:30 p.m. BBC News TVRE
- 11:00 p.m. Amanpour and Company TVRE

WEDNESDAY, JUNE 17

- 7:00 p.m. **Nature** *Wildheart* TVPG Immerse yourself in Scotland's wild highlands with its magnificent 500-year-old Scots pine tree.
- 8:00 p.m. **NOVA** *Secrets of the Forest* TVPG Explore how experts try to tackle the twin threats of climate change and the threat of extinction.
- 9:00 p.m. **The Kimberley: Australia's Wild West** *River of Life* TVPG
- 10:00 p.m. **To the Contrary with Bonnie Erbe** TVRE
- 10:30 p.m. BBC News TVRE
- 11:00 p.m. Amanpour and Company TVRE

THURSDAY, JUNE 18

- 7:00 p.m. **Postcards** *Brice Dempcy and Lulu Beans Coffee Shop* In Madison, singer-songwriter Brice Dempcy tackles difficult topics such as mental health and suicide prevention. In a historic converted house in Willmar, LuLu Beans Coffee Shop offers a welcoming space for everyone.



Postcards | Brice Dempcy and Lulu Beans Coffee Shop

- 7:30 p.m. **Prairie Yard & Garden** *Camphill Village - Sauk Centre* At Camphill Village near Sauk Centre, Annie Welck and Tomas Kovacs guide Mary Holm through a sustainable farm supporting a cooperative community for people with disabilities.
- 8:00 p.m. **Wheels "Classics & Collections" 2nd Gear** Discover the stories behind a 1954 Nash Metropolitan called "Sweet Pea," a rare original 1976 Ford Torino "Starsky and Hutch" edition and the Antique Car Run "New London to New Brighton," where unique automobiles are featured.
- 9:00 p.m. **Hometowns** *Corolla, North Carolina* Explore Corolla, a coastal paradise on the Outer Banks of North Carolina.
- 9:30 p.m. **Austin City Limits** *Norah Jones/Hurray for the Riff Raff* TVPG
- 10:30 p.m. BBC News TVRE
- 11:00 p.m. Amanpour and Company TVRE

FRIDAY, JUNE 19

- 7:00 p.m. **Washington Week with The Atlantic** TVRE
- 7:30 p.m. **Firing Line with Margaret Hoover**
- 8:00 p.m. **Ag PhD**
- 8:30 p.m. **Market to Market**
- 9:00 p.m. **American Experience** *Part 1* TVPG George H.W. Bush's service in World War II, early career in Texas and his presidency are examined.
- 11:00 p.m. Amanpour and Company TVRE

SATURDAY, JUNE 20

- 6:00 p.m. Classic Gospel *Travis Tritt: Country Chapel*
- 7:00 p.m. **Curious Traveler** *Curious Marrakech, Morocco* Find out the history, heritage and beauty of Marrakech.
- 7:30 p.m. **Prairie Sportsman** *Along The Gunflint Trail*
- 8:00 p.m. **Hiseerie** *Campfire Stories: Part 3* Join us around the campfire for spooky and strange stories from cryptids to odd town history across the Midwest.
- 8:30 p.m. **Radio Bristol's Farm and Fun Time** *Adam Bolt, Caitlin Crisco and the Broadcast*
- 9:30 p.m. **Grantchester on Masterpiece** *Season 10, Episode 2* TV14 Alphy faces a complication in his romantic life.
- 10:30 p.m. The Caverns Sessions
- 11:00 p.m. Austin City Limits TVPG

SUNDAY, JUNE 21

- 6:00 p.m. **Antiques Roadshow** *Crystal Bridges Museum of American Art, Hour 1*
- 7:00 p.m. **Postcards** *Brice Dempsy and Lulu Beans Coffee Shop*
- 7:30 p.m. **Prairie Sportsman** *Rabbit Hunting and Raptor Rehab* Host Bret Amundson joins a group of long-time friends on their annual Black Friday rabbit hunt and The Raptor Center cares for injured birds of prey while also educating the public about these majestic predators.
- 8:00 p.m. **Patience** *Music in the Minster* TV14
- 9:00 p.m. **Grantchester On Masterpiece** TV14
- 10:00 p.m. **Downton Abbey Season 2 On Masterpiece Part Two** TVPG Downton becomes a convalescent home with Thomas in charge. Lavinia and Richard's secret comes out.
- 11:00 p.m. **Wheels "Classics & Collections"**

MONDAY, JUNE 22

- 7:00 p.m. **Antiques Roadshow** *Crystal Bridges Museum of American Art, Hour 3* Head to bustling Bentonville for ROADSHOW finds at Crystal Bridges Museum of American Art!
- 8:00 p.m. **Antiques Roadshow** *Springs Preserve, Hour 1* Las Vegas treasures hit the jackpot with ROADSHOW's top \$650,000 find of Season 29!
- 9:00 p.m. **Independent Lens** *Assembly* TV14 Rashaad Newsome prepares to showcase a groundbreaking exhibit at the Park Avenue Armory.
- 10:00 p.m. **Consuelo Mack WealthTrack**
- 10:30 p.m. BBC News TVRE
- 11:00 p.m. Amanpour and Company TVRE

TUESDAY, JUNE 23

- 7:00 p.m. **Finding Your Roots** *The Ties That Bind* TVPG Henry Louis Gates Jr. maps the roots of married actors Kristen Bell and Dax Shepard.
- 8:00 p.m. **Lucy Worsley Investigates: The American Revolution** *The Break Up* TV14 Lucy Worsley investigates the explosive 18th century break up of Britain and America.
- 9:00 p.m. **Frontline**
- 10:00 p.m. **Firing Line with Margaret Hoover**
- 10:30 p.m. BBC News TVRE
- 11:00 p.m. Amanpour and Company TVRE

WEDNESDAY, JUNE 24

- 7:00 p.m. **Nature** *American Horses* The history of the uniquely American horse breeds that helped shape our nation is showcased.
- 8:00 p.m. **NOVA** *Ancient Desert Death Trap* TVPG Archaeologists investigate strange Stone Age megastructures in the Arabian desert.
- 9:00 p.m. **The Kimberley: Australia's Wild West** *Tidal Territory* TVPG
- 10:00 p.m. **To The Contrary with Bonnie Erbe** TVRE
- 10:30 p.m. BBC News TVRE
- 11:00 p.m. Amanpour and Company TVRE

THURSDAY, JUNE 25

- 7:00 p.m. **Postcards** *Shepherd's Bay Farm* On their farm near Alexandria, Kathy and Terry Sletto stay connected to a long family heritage of wool-production through their collection of sheep, rabbits and guard llamas.
- 7:30 p.m. **Prairie Yard & Garden** *Growing Apricots, Apples and More - Canby* Fruit grower Al Precht of Canby shows Mary Holm how he successfully grows and grafts apricots, along with a thriving mix of apples, plums, and a large vegetable garden.
- 8:00 p.m. **Wheels "Classics & Collections"** *3rd Gear* Explore the special connection between owners and their vehicles in WHEELS "Classics and Collections" 3rd gear.
- 9:00 p.m. **Hometowns** *Franklin, Tennessee* Visit Franklin, a town deeply committed to preserving its rich history.
- 9:30 p.m. **Austin City Limits** *Kacey Musgraves* TVPG
- 10:30 p.m. BBC News TVRE
- 11:00 p.m. Amanpour and Company TVRE

FRIDAY, JUNE 26

- 7:00 p.m. **Firing Line with Margaret Hoover Special**
- 8:00 p.m. **Ag PhD**
- 8:30 p.m. **Market to Market**
- 9:00 p.m. **American Experience** *Part 2* TVPG Bush's role as leader of the first Gulf War and his final days as President are examined.
- 10:30 p.m. **The American Revolution: An Inside Look** TV14
- 11:00 p.m. Amanpour and Company TVRE

SATURDAY, JUNE 27

- 6:00 p.m. **Classic Gospel** *Chris Blue: Foundations - The Hymns of My Heart*
- 7:00 p.m. **Curious Traveler** *Curious Mont Saint-Michel & Rennes, France* Visit the UNESCO site of the magical Mont Saint-Michel in France.
- 7:30 p.m. **Prairie Sportsman** *Rabbit Hunting and Raptor Rehab*
- 8:00 p.m. **Hiseerie** *Farrar Elementary School*
- 8:30 p.m. **Radio Bristol's Farm and Fun Time** *Compton and Newberry, Jesse Daniel*
- 9:30 p.m. **Grantchester on Masterpiece** *Season 10, Episode 3* TV14 Alph's romantic dinner is interrupted by an unannounced visit from a familiar face.
- 10:30 p.m. **The Caverns Sessions** TVPG
- 11:00 p.m. **Austin City Limits** TVPG

SUNDAY, JUNE 28

- 6:00 p.m. **Antiques Roadshow** *Crystal Bridges Museum of American Art, Hour 3*
- 7:00 p.m. **Postcards** *Shepherd's Bay Farm*
- 7:30 p.m. **Prairie Sportsman** *An Inspirational Hunt and Prairie Pothole Day* Host Bret Amundson hunts ducks with Iraq War veteran John Kriesel, while Prairie Pothole Day celebrates its 42nd year connecting people with the outdoors.
- 8:00 p.m. **Patience** *The Magpie* TV14



- 9:00 p.m. **Grantchester on Masterpiece** TV14
- 10:00 p.m. **Downton Abbey Season 2 on Masterpiece Part Three** TVPG Isobel and Cora lock horns over control of Downton's medical role. Mrs. Bird starts a soup kitchen.
- 11:00 p.m. **Wheels "Classics & Collections"**

MONDAY, JUNE 29

- 7:00 p.m. **Antiques Roadshow** *250 Years of Americana* ROADSHOW discoveries reflect 250 years of American art, artifacts, crafts and collectibles.
- 8:00 p.m. **Antiques Roadshow** *Springs Preserve, Hour 2* Head to desert oasis Springs Preserve for treasures that are sure to heat up the market.
- 9:00 p.m. **Declarations: Black Americans and the Revolutionary War** TV14
- 10:00 p.m. **Consuelo Mack WealthTrack**
- 10:30 p.m. BBC News TVRE
- 11:00 p.m. Amanpour and Company TVRE

TUESDAY, JUNE 30

- 7:00 p.m. **Finding Your Roots** *Secret Lives* TVPG Henry Louis Gates Jr. helps comedians Carol Burnett and Niecy Nash solve deep family mysteries.
- 8:00 p.m. **Lucy Worsley Investigates: The American Revolution** *A Messy Divorce* TV14 Lucy Worsley investigates how America's 18th century fight for freedom reshaped Britain.
- 9:00 p.m. **Frontline**
- 10:00 p.m. **Firing Line with Margaret Hoover**
- 10:30 p.m. BBC News TVRE
- 11:00 p.m. Amanpour and Company TVRE

Please find complete and current listings online at pioneer.org/schedule.

	Sunday	Monday*	Tuesday	Wednesday	Thursday	Friday	Saturday*
11:30	Overheard with Evan Smith	Best of the Joy of Painting	Medical Stories	Climate California	Farmer and the Foodie	Barefeet with Mickela Mallozzi	Ag PhD
12:00	Whitney Reynolds Show		MotorWeek	History Detectives	Classical Tahoe	Common Ground	Market to Market
		Hiseerie					
12:30	J. Schwanke's Life in Bloom	Prairie Sportsman	Ask This Old House			This Old House	This Old House
1:00	American's Test Kitchen		Tim Farmer's Country Kitchen	Live from the Artists Den (5/6) Books by the River (5/13-6/24)	Upstate Attractions (5/7-5/28) Recipe for Wellness (6/4-6/25)	Refresh Quiet	America's Heartland (4/11-4/25)
		Prairie Yard & Garden					
1:30	MotorWeek	Postcards	Best of the Joy of Painting	Live from the Artists Den (5/6) Lucky Chow (5/13-6/24)	Travels with Darley	Fons & Porter's Love of Quilting	Woodsmith Shop
2:00	Various Programming		Garden Smart	Joy of Painting with Nicholas Hankins	Quilting Arts (5/7-6/11) Son of a Butcher (6/18-6/25)	Best of Sewing with Nancy	Tim Farmer's Country Kitchen (5/2-5/23) Savers of Favor (5/30-6/27)
		Funtime Polka					
2:30		Fit 2 Stitch	Ireland with Michael (5/5) View Finders (5/12-6/30)	Energy Switch	Family Plot: Gardening in the Mid-South	Christina Cooks: Back to the Basics	Christopher Kimball's Milkstreet
3:00		Alma's Way	Alma's Way	Alma's Way	Alma's Way	Alma's Way	Weekends with Yankee

*Special programming will air Monday, May 25 on Memorial Day.

Pioneer  PBS

Help sustain the future of Pioneer PBS for another 60 years.

BECOME A SUSTAINING MEMBER.

Learn more at pioneer.org/support

SHARING YOUR STORIES WITH THE WORLD ● ● ●

DAIRY DAYS
JUNE 13, 2026

FREE

COJO DAIRY
51036 310TH ST GROVE CITY MN

KWLM
1340 AM 96.3 FM
NEWS/TALK

LEARN MORE 



ENTER TO WIN PRIZES!

KWLM LIVE BROADCAST ON 1340 AM, 96.3 FM & KWLM.COM

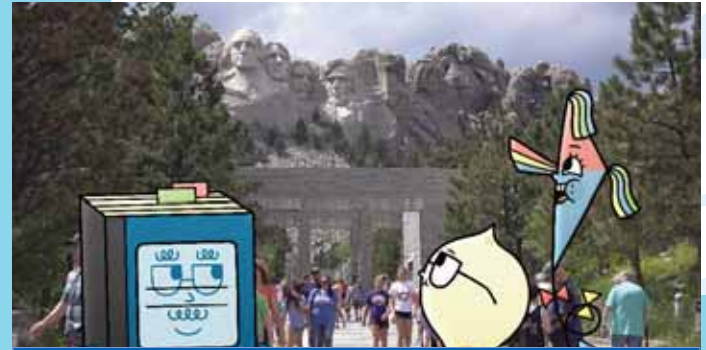
FREE COOKIES, MILK, ICE CREAM, CHEESE, & CRACKERS





WHERE TO WATCH PIONEER PBS KIDS

Over the Air • PBS KIDS Video App
 Live TV: Prime Video • Hulu • YouTube TV
 24/7 Kids Channel: pbskids.org/video



WEEKDAYS

6:00 a.m.	Wild Kratt's
6:30 a.m.	Weather Hunters
7:00 a.m.	Lyla in the Loop
7:30 a.m.	Carl the Collector
8:00 a.m.	Daniel Tiger's Neighborhood
8:30 a.m.	Phoebe & Jay
9:00 a.m.	Sesame Street
9:30 a.m.	Work It Out Wombats!
10:00 a.m.	Donkey Hodie
10:30 a.m.	Rosie's Rules
11:00 a.m.	Elinor Wonders Why
3:00 p.m.	Alma's Way
3:30 p.m.	Odd Squad
4:00 p.m.	Molly of Denali
4:30 p.m.	Xavier Riddle and the Secret Museum
5:00 p.m.	Arthur

SATURDAYS & SUNDAYS

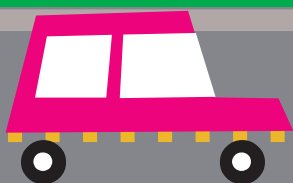
5:00 a.m.	Mister Rogers' Neighborhood
5:30 a.m.	Arthur
6:00 a.m.	Wild Kratt's
6:30 a.m.	Weather Hunters
7:00 a.m.	Lyla in the Loop
7:30 a.m.	Carl the Collector
8:00 a.m.	Daniel Tiger's Neighborhood
8:30 a.m.	Phoebe & Jay

Schedule is subject to change.

ROAD TRIP PACKING LIST

Where will your family explore this summer?

- Healthy Snacks & Water
- Pillow & Blanket
- Plushie & Toys
- Books & Games
- Pencils & Crayons
- Activity Book & Paper
- Tablet/Phone to watch your favorite PBS Kids show or play your favorite game





Work It Out Wombats!

ALL-NEW
EPISODES

WATCH

LISTEN



STREAM THE
PODCAST

PLAY



DOWNLOAD
THE GAME

Pioneer  PBS

Pioneer PBS

FROM RURAL ROOTS TO REGIONAL VOICE

From early access to education to lasting community connection and storytelling

It started with an idea—and a community willing to build it. From bake sales to broadcast towers, Pioneer PBS grew from humble beginnings into a regional voice, dedicated to telling the stories of rural Minnesota and the people who call it home. Learn more about the history of Pioneer PBS at pioneer.org/about.

1950s

The Beginning of Public TV

Public television began in 1952 when the FCC reserved channels for education, opening opportunities for rural communities to access programming often unavailable through commercial broadcasting.

West Central Minnesota Educational Television Company

In Appleton, community leaders formed the West Central Minnesota Educational Television Company, driven by a belief that rural communities deserved access to high-quality educational media.

1960s

Built by the Community



Local families, businesses, and organizations raised funds through small donations and events. Land, equipment, and a one-room schoolhouse were donated to help launch the station.

First Broadcast

KWCM-TV aired its first program February 7, 1966, delivering classroom instruction in subjects like science, language and music to students across the region.



1970s

Growing Pains and Progress

As participation grew, funding challenges emerged. The station adapted by strengthening partnerships, expanding programming, and seeking new support to sustain educational services.

1980s

A Rural Focus Takes Shape

Leadership prioritized programming that reflected rural life, focusing on agriculture, small towns and local issues while introducing live productions and innovative services like Agvision.

A New Name, A Clear Mission



In 1983, the station became Pioneer Public TV, embracing its identity as a rural storytelling leader and launching cornerstone programs that connected directly with local audiences.

1990s

Expanding the Signal

New towers extended coverage across Minnesota and neighboring states, growing viewership to hundreds of thousands and strengthening Pioneer's regional reach and impact.

Telling Local Stories

Programs like Prairie Sportsman and Funtime Polka highlighted regional traditions, reinforcing Pioneer's role as a storyteller rooted in rural culture and community life.



EARLY 2000s

Digital Transformation, Stability and Growth

The transition to digital broadcasting improved signal quality, expanded channel offerings and positioned Pioneer PBS for long-term growth in a changing media environment. Leadership focused on reducing debt, building a stable foundation for continued innovation and expansion.

2010s

New Programs, New Energy

New series expanded storytelling into arts, culture and history, deepening community connections and showcasing the diverse experiences of western Minnesota.

2013 AND BEYOND

Award-Winning Work



Pioneer PBS earned numerous Emmy Awards, recognizing the excellence and impact of its local productions and its commitment to meaningful, community-driven storytelling.

TODAY

Beyond Broadcast

Streaming, social media and digital platforms extend Pioneer PBS's reach beyond traditional television across the region and beyond.

FUTURE

Still Telling the Story

From a one-room schoolhouse to a multi-platform network, Pioneer PBS continues to share local voices, connecting communities for generations to come.

Pioneer PBS

For 60 years, Pioneer PBS has shared the stories of greater Minnesota—the people, places and traditions that define our region. As we mark this milestone, we are looking ahead. Building the next 60 years will take continued community support.

Pioneer PBS reaches more than 1 million viewers across rural Minnesota and into the Dakotas and Iowa. And 94% of viewers say they trust PBS sponsors more than commercial advertisers.

WE INVITE YOU TO BE PART OF WHAT COMES NEXT. INVEST IN THE STORIES THAT DEFINE OUR REGION — AND PUT YOUR BUSINESS IN FRONT OF THE PEOPLE WHO TRUST PIONEER PBS.

Your support helps ensure that local stories continue to be told, educational programming remains accessible, and communities across our region stay connected.

- Connect with 1 million+ viewers who value and trust public media
- Align your business with a respected, long-standing local institution
- Show your commitment to families, farmers, schools and small-town communities
- Support regional storytelling and educational programming
- Strengthen your brand through trusted community visibility
- Make a tax-deductible investment that gives back locally

HELP US CELEBRATE 60 YEARS—AND INVEST IN THE FUTURE OF PUBLIC TELEVISION.

“Working with everyone at Pioneer PBS has been a pleasure! They are always excited to engage our local audience and share what we’re about. In a media industry where mergers and takeovers reduce local content, with behemoth conglomerates completely ignoring rural areas, Pioneer PBS remains focused on their local roots!”

Pioneer PBS truly cares about improving our rural communities and that has been evident in their original programming, in their community outreach, and in each interaction I’ve had with their employees.”

- Jake, KRAM

60 years
**SHARING YOUR STORIES
WITH THE WORLD**



If you're ready to learn more, let's talk about how your business can get involved.

mmeyer@pioneer.org | 320-289-2929



BUSINESS SUPPORTERS



**Shalom Hill
Farm**
Windom



**Marshall
Radio**
Marshall



Christensen Broadcasting (*Pipestone*)
Explore Alexandria (*Alexandria*)
Heartland Motor Company (*Morris*)
Lakeland Media | Willmar Radio (*Willmar*)
96.7 KRAM (*Montevideo*)
Minnesota Corn (*St. Paul*)
West Central Initiative (*Fergus Falls*)

Big Stone County SWCD (*Ortonville*)
KLOP Radio (*Madison*)
Lac qui Parle County SWCD (*Madison*)
Meeker County SWCD (*Litchfield*)
Minnesota Public Radio (*Collegeville*)
Swift County Parks, Drainage and Wetlands (*Benson*)
Victor Lundeen Company (*Fergus Falls*)
Wright County SWCD (*Buffalo*)
Yellow Medicine County SWCD (*Clarkfield*)

Hug Hydronics (*Pine River*)
Minnesota Cooks Calendar (*St. Paul*)
Senior Perspective (*Glenwood*)
Upper Minnesota Valley Regional Development Commission (*Appleton*)

Are you a business or do you know of a business who might benefit from underwriting with Pioneer PBS? Contact us at mmeyer@pioneer.org to start the conversation.



Scan here with your smart phone
to learn more about business sponsorship
opportunities with Pioneer PBS.



Pioneer  PBS
PIONEER PREVIEW

1 Pioneer Dr. | Granite Falls, MN 56241

PERIODICAL



DOWNTON ABBEY

DOWNTON ABBEY RETURNS—AND SO DOES THE DRAMA

BEGINNING SUNDAY, MAY 17 AT 10 P.M.