

Down the Duck

with
John Guider



The 11th (and Final) Season of
GRANTCHESTER Premieres June 14



SENIOR STAFF

Becky Magura, *President & CEO*
 Marianne Monoc, *Chief Development Officer*
 Tamra Swiderski, *Sr. Director of Finance*
 Dale Baker, *Sr. Director of Engineering*
 McKenly Blair, *Sr. Director of Human Resources*
 Shane Burkeen, *Sr. Director of Digital, Brand and Marketing*
 Megan Grisolano, *Executive Producer & Sr. Director of Content*
 MiChelle Jones, *Director of Communications*
 Samantha Andrews, *Director of Education & Engagement*
 Dr. Sarah Childress, *Director of Strategy & Operations*
 Sheila Fischer, *Director of Development*
 Paul Mojonniier, *Director of Production*

BOARD OF DIRECTORS

Perri duGard Owens, *Chair*
 Sarah Teague, *Immediate Past Chair*
 Jennifer Biefel, *Vice Chair / Programming Committee Chair*
 Brian W. Zempel, *Treasurer / Fin. Com. Chair*
 Melinda Hudgins Noblitt, *CMD, Secretary*
 Richard Warren, *Development Committee Chair*
 Scott Carey, *Nominating Committee Chair*
 Becky Magura, *President & CEO*
 Scott Becker
 Chris Boyd
 Brian Brockman
 David Campbell
 Nicole Carter
 Sophia Chaidez
 Melanie Drudge
 Demetria Kalodimos
 Dr. David J. Kennedy
 Michael Malesick
 Mark Manley
 Renee Monterio
 Rebecca Paul
 Amy Cox Williams
 Sally Williams
 Carlene Lebous, *Emeritus*

COMMUNITY ADVISORY BOARD

Les Kerr, *Chairman*
 Jay McDowell, *Vice Chair*
 Dr. Carolyn Adkerson
 Penny Brink
 Karen Lynn Coffee
 Paula Daigle
 Erica Francescon
 William Courtney Fullum II
 Yolanda Hockett
 Eve Hutcherson
 Les Kerr
 Cameron McCasland
 Jay McDowell
 LaTonya Moore
 Emma Shanahan
 Belinda Shillingburg
 Tina Stoyka
 Asailio "Ace" Timmermeier
 Tabeer Taabur
 Lorenzo Washington

Dr. Carolyn Adkerson - Managing Editor – editor@wnpt.org

Printed by a Nashville Company, R.H. Boyd Publishing Company

For on-air and print advertising and promotion, contact Derek Anderson at 615.406.9625 or danderson@wnpt.org

**WELCOME TO YOUR
Nashville PBS**

- 03 Pizza Festival
- 04 For The Love of Nashville, Becky Magura, President & CEO
- 05 Trusted. Valued. Essential
- 06 Clean Slate with Becky Magura
- 06 Aging Matters
- 07 Next Door Neighbors On-Air Premier
- 08 A Slice of the Community
- 08 Donate Your Car to Nashville PBS
- 09 Down the Duck Documentary
- 10 Nashville PBS in the Neighborhood
- 12 Partner Spotlight - Sara DeWitt
- 14 Download the Nashville PBS App & the PBS App
- 16 PBS Highlights
- 18 Membership Special Highlioghts
- 19 Create and WORLD Channels
- 20 What's New on PBS KIDS
- 20 PBS KIDS Channel Schedule
- 21 More Than A Stage – A New Nashville PBS Documentary
- 21 Daytime Schedule
- 22 Primetime for May and June
- 26 Nashville PBS Pet Club



DOWN THE DUCK WITH JOHN GUIDER

Tennessee's Duck River is on the list of America's Most Endangered Rivers®. John Guider paddled 270 miles down the Duck River on a camping and canoe expedition where he discovered history, community and a river in peril. Watch it on the PBS App anytime.

On the 11th season of GRANTCHESTER... It's 1963, and Grantchester is still the quiet, picturesque village you've come to know and love, full of dark secrets... and murder!

Down the Duck on page 9.
Grantchester on page 17.



CHANNEL GUIDE & SERVICE PROVIDERS

SERVICE PROVIDER	Nashville PBS	WORLD	PBS KIDS	create
Over-the-Air	8.1	8.2	8.3	8.4
Charter	8	176	189 or 192	190, 192, 193
Comcast-Xfinity	8, 1008	241	242	256, 1161
DirecTV	8	NA	288	NA
DirecTV-Stream	8	NA	288	NA
YouTube	8	NA	NA	NA
U-Verse	8, 1008	NA	NA	NA
TDS	8, 1008	NA	NA	NA
LightTube	8	NA	NA	NA

ALL-ARTS is available to watch at allarts.org



Nashville PBS

MAY 30, 11 A.M. - 3 P.M.
AT NASHVILLE PBS

WNPT.ORG/EVENTS



JEROME MOORE
Host of A Slice of the Community



PIZZA ASSURDA!!!



AND CHEFS

chinwag

- ALEX BELEW – HELLS KITCHEN WINNER (CHINWAG)
- DAVIS REESE (CULINARY ORGANIZER)
- TANDY WILSON – JAMES BEARD AWARD-WINNING CHEF (CITY HOUSE)
- GERARD CRAFT – JAMES BEARD AWARD-WINNING CHEF (NICHE FOOD GROUP)



FOR THE LOVE OF NASHVILLE

Becky Magura

President & CEO of Nashville PBS



It's a wrap of federal funding for public media... or is it?

The recent ruling by a federal judge on the President's Executive Order denying funding for PBS and NPR deemed the order unlawful under First Amendment rights. While we celebrate this decision with PBS, it does not restore federal funding from the FY '26 rescission issued by Congress. As we have shared, this resulted in an immediate 20% deficit in our local funding this year, and you have worked with us to restore that funding through local contributions. Thank you. It has been a stellar year for contributions, and we are working to close that funding gap. We ask that you continue to stand with us and renew your annual commitment as this significant loss of funding continues.

We also ask that you continue to share your voice with our Congressional leaders about the importance of a strong public media infrastructure. Public television is an important part of our national fabric. It not only educates and connects, but also protects as the nation's backbone for emergency messaging. While the Corporation for Public Broadcasting has dissolved, the need for federal funding as foundational support for local public media stations remains a high priority and request to our Congressional leaders. PBS is more than nice; it is necessary for an informed citizenry and inspired nation. The federal appropriation of \$1.60 per American annually was an investment well spent, using our airwaves as intended—for the greater good of our nation.

It's a wrap for the magazine...or is it?

This issue marks the final installment in our second season of launching the magazine and my article, "For the Love of Nashville." Everything we do is for the love of Nashville and our region. Many of you have shared that you appreciate this in-depth reflection of our work, content, and schedule in this bimonthly publication. We print several thousand copies, mailed to members and shared at community events, and it is always available online for free download — nearly 6,000 of you have done so — and distributed throughout our community. While we invest in this printed "storefront magazine," it is made possible through corporate sponsors, grants, and members like you. It is another way Nashville PBS distributes quality content and highlights our impact and partnerships with local companies, organizations, and community members. Thank you for making this investment a success.

It's a wrap of FY '26 as we prepare for the future.

May and June will bring an abundance of national and local documentary premieres, new series, and an upcoming Nashville PBS Pizza Festival to support our series, Slice of the Community. I hope you will help us end our fiscal year strongly and share your dreams for Nashville PBS as we create a new three-year strategic plan. It is imperative we hear from you—our loyal viewers and members—to prepare for the future. *Please share your thoughts by calling 615-259-9325, scanning the QR code. We want to hear from you.*

Thank You!

TRUSTED. VALUED. ESSENTIAL.

Amy Schromm, Producer & Director

What's YOUR Nashville PBS Story?



Hi Neighbor!

I'm Amy Schromm, a creative producer and director with over 15 years in the industry. We are at a pivotal moment at Nashville PBS — \$1.3 million in federal funding is gone; the media landscape is shifting, and people don't know who to trust anymore. PBS is one of the few institutions audiences have trusted for over 60 years. I believe in the power of story and in building legacy brands. We are standing at the rebirth of media — not only PBS but globally — and I truly believe in the impact and care PBS executes every single day.

Nashville PBS truly embodies what it means to be a neighbor and a helper. Just like Mister Rogers, they find the helpers, they listen, and they show up for this community every day. True impact comes from supporting each other locally. These are our neighbors — the coffee shop next door, the large corporation bringing jobs into the city, the individual giving resources when they are needed most. When things feel overwhelming at a national level, I truly believe we can create the future by supporting each other locally and being the helpers.

Nashville PBS is doing impactful work every day and we would love to hear your story. Every voice matters, every story has meaning. If PBS has made a difference in your life, send it our way. Sharing your story is one of the most powerful ways to build awareness and support for the programs that bring us together.

This is the time for Nashville to shine. When you sustain what you trust you are investing in something much larger. Donors are not just contributing — you are part of the family, sustaining something essential together. You are an investor in this community.

Thank you for being a part of the family and sustaining Nashville PBS.

YOU POWER

Nashville  PBS

Help us continue
to tell your stories.



donate.wnpt.org



NASHVILLE PBS ORIGINALS



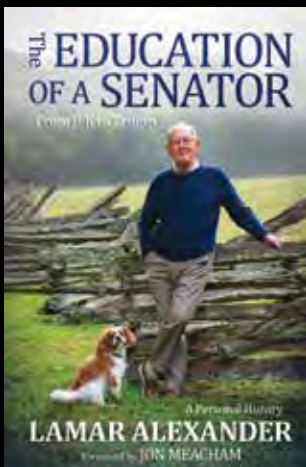
CLEAN SLATE

– Becky Magura

May Guest

Nashville native Sara DeWitt, Senior VP and GM of PBS KIDS, is our guest. As leader of the #1 educational media brand for children, Sara oversees the strategic vision for the streaming, broadcast, and gaming content that sparks curiosity in millions of kids. Join us as we discuss her work supporting families and local communities nationwide.

June Guest



Senator Lamar Alexander will be sharing what he has been doing for the last five years with a “clean slate” after he left the U.S. Senate. He will also talk to us about his new book, which is scheduled to be released in May.



AGING MATTERS

Thursday, June 18 at 8pm

There's no better investment in our overall wellbeing than a healthy dose of prevention, and that includes comprehensive eye examinations. For adults 65 years old or older, examinations are recommended every 1-2 years, even without symptoms. In fact, missing out could cost us keen insights into the state of our health.

As a case in point, glaucoma is one of the leading causes of blindness in adults over 60 and is sometimes called the 'silent thief of sight' because it results in permanent structural damage prior to any detectable vision loss. Moreover, according to information cited by the American Academy of Ophthalmology, problems spotted in the eyes can be some of the first indications of diseases hiding elsewhere, including high blood pressure, diabetes, cancer, and more. Indeed, the eyes have been aptly described as windows, not just into our souls, but into our physical wellbeing.

In this episode of AGING MATTERS, we'll partner with the Vanderbilt Eye Institute in an effort to better understand the role that our eyes play in our overall health. Today, advances in technology as well as molecular and genetic research are leading the way toward therapeutic procedures that could target eye conditions and prevent or even reverse vision loss. This includes the treatment of macular degeneration, another leading cause of blindness in adults over 60. Through direct conversations with a team of Vanderbilt's leading doctors and their patients, we'll gain a more thorough understanding of what can be seen through the eyes – our windows to wellbeing.

*AGING MATTERS is made possible with the support of West End Home Foundation, Jeanette Travis Foundation and HCA Healthcare Foundation.





L-R: Arnold Myint, Megan Grisolano, and Anna Myint, owners of International Market

NEXT DOOR NEIGHBORS

GLOBAL FLAVORS SHAPING NASHVILLE

Three restaurants. Three stories. One evolving Nashville – where culture, community, and cuisine come together.

On-Air Premiere Thursday, June 25 at 8pm

For more than a decade, Nashville PBS's award-winning NEXT DOOR NEIGHBORS series has explored the stories of immigrants and refugees calling this region home, highlighting the people, cultures, and traditions that continue to shape Nashville's identity. As the city grows, so too does its culinary landscape — where longtime Southern staples now share the table with flavors from around the world.

In this new, 30-minute documentary, the series once again turns to food as a powerful lens, revealing how Nashville's dining scene is being reimagined through culture, creativity, and community. The film offers an intimate look inside three distinct culinary destinations, each rooted in heritage and driven by personal story.

At *Lyra*, chef Hrant Arakelian blends Middle Eastern traditions with modern technique, where a wood-burning oven anchors both the menu and the restaurant's warm, communal spirit.

International Market continues a beloved Nashville legacy, as siblings Anna and Arnold Myint carry forward their parents' pioneering introduction of authentic Thai cuisine — now recognized on a national stage.

At *615chuTney*, home-style South Indian cooking meets cultural celebration, where handcrafted dishes, live music, and artistic expression create a space that is as much about community as it is about cuisine.

Together, these stories illuminate how food can transcend borders—preserving heritage, sparking innovation, and bringing people together across cultures. Each restaurant reflects a unique journey, yet all share a common thread: a deep commitment to craft, family, and belonging.

Through these voices, NEXT DOOR NEIGHBORS continues to celebrate the richness of Nashville's diversity, offering a portrait of a city where global influences are not just present, but essential to what Nashville is becoming.

*NEXT DOOR NEIGHBORS is made possible with the support of the Nissan Foundation.

A SLICE OF THE COMMUNITY

Confronting Anti-Blackness, Part 2

Thursday, June 18 at 8:30pm

Nashville PBS' Jerome Moore hosts Part 2 of CONFRONTING ANTI-BLACKNESS featuring Dr. Jemar Tisby, New York Times bestselling author and historian; Tim Wise, author and anti-racism educator; and Jasmine Woodson, conservative criminal justice lobbyist and anti-death penalty advocate. Together, they examine how anti-Blackness shows up in institutions, culture, and daily life.

NOW, LIVE MONTHLY

Watch A SLICE OF COMMUNITY *anytime* on the PBS app.



*A SLICE OF THE COMMUNITY is made possible with the support of First Horizon Foundation.



**MAKE SPACE
FOR WHAT
MATTERS.**

A brighter spring starts with room to bloom. Donate your car!



Free Pick-up.
Running or not.
Tax Deductible.



Nashville  PBS
wnpt.or/car
or 1-855-500-7433

 THE TENNESSEE
conservationist

Learn about Tennessee's native species, history,
and culture—delivered six times per year!

100% recycled paper • Colorful photography • Real Tennessee stories



Your guide to the great outdoors.
SUBSCRIPTIONS at tnconservationist.org



An Asian Carp jumps into John Guider's canoe on the Duck River

DOWN THE DUCK WITH JOHN GUIDER is the kind of film that could only come from a public media organization deeply rooted in the region it serves.

Produced in partnership with Nashville-based Archaea, this documentary follows acclaimed photographer and author John Guider as he paddles all 270 miles of the Duck River, capturing the beauty of one of the world's most ecologically diverse waterways and the growing urgency surrounding its future.

As Guider makes his month-long canoe and camping expedition downriver, the film reveals a waterway rich in history, ecological significance, and community meaning. Experts, advocates, and local voices help illuminate why the Duck River is so essential to Middle Tennessee and why it is increasingly at risk. In 2024, American Rivers named it one of America's Most Endangered Rivers, citing rapid development and unsustainable water extraction.

What makes this project especially powerful is the way it pairs beauty with purpose. Down the Duck doesn't approach that challenge with alarm alone. It offers what public media does especially well: context, humanity, and the opportunity for meaningful connection.

That kind of storytelling doesn't happen by accident. It happens because donors make room for thoughtful, high-quality productions that inform, inspire, and strengthen civic life. When you support Nashville PBS, you help bring stories like Down the Duck to life — stories that celebrate our region, elevate urgent issues, and create space for dialogue grounded in trust.

**Watch DOWN THE DUCK WITH JOHN GUIDER
free anytime on the PBS app.**



Photographer John Guider is nationally recognized for his water journeys



John McEwan and Kevin Doyle in the pursuit boat

NASHVILLE PBS IN THE NEIGHBORHOOD

Small team, big impact. Led by Samantha Andrews, Nashville PBS's Education Department connects Middle Tennessee through digital learning, community events, and meaningful conversations — from kids' programming to AGING MATTERS screenings. Wherever there's a chance to make a positive difference, they are there.

L-R: Samantha Andrews (NPBS Director of Education and Engagement); Becky Magura (NPBS President & CEO); Sara DeWitt (Senior Vice President and General Manager, PBS KIDS and Education, PBS); Lisa Whittick, Director, CARL THE COLLECTOR (Emmy-winning PBS KIDS series); Maureen Grieco (Senior Director, Strategy & Stewardship, PBS Foundation); and Lubna Abuulbah (Senior Director, PBS KIDS Communications, PBS). Visit Junior Achievement BizTown.



Nashville Newroz Celebration presented by the Tennessee Kurdish Community Council



Coffee & Conversations in LaVergne



Williamson County Parks & Recreation Senior Tour at Nashville PBS

NASHVILLE PBS IN THE NEIGHBORHOOD



Nashville PBS at the 22nd Annual Southeast Nashville Egg Hunt & Festival, supporting community literacy, education, and family-friendly experiences.



Nashville PBS at Fall-Hamilton Elementary Black Excellence celebration during Black History Month.



A Slice of the Community taping featuring students and educators from Metro Nashville Public Schools' Johnson Alternative Learning Center discussing the Hawks Talk student-led podcast.

PARTNER SPOTLIGHT:

Sara DeWitt

Senior Vice President and General Manager
PBS KIDS and Education



Recently, Nashville PBS had the pleasure of hosting Sara DeWitt. As Senior Vice President and General Manager, PBS KIDS and Education, Ms. DeWitt leads a cross-disciplinary team at PBS KIDS – the #1 educational media brand for kids – sparking children’s curiosity across streaming video, broadcast, games, and other platforms. She also oversees PBS’s formal educational offerings, including PBS LearningMedia, a digital platform that offers free media-centric classroom resources to PreK-12 educators.

Under her leadership, PBS KIDS has produced award-winning games and apps, AR and AI experiences, podcasts and second screen technologies; developed a learning analytics platform to better understand children’s learning gains through gameplay; and established itself as a gold standard in children’s digital privacy and security.

DeWitt is a regular speaker on the subjects of digital privacy, games and learning, and has authored academic papers and editorials on children’s media and its educational impact. She gave a widely shared TED Talk debunking myths about screen time, was honored with the 2020 Hedy Lamarr Award for Innovation in Entertainment Technology, and has consistently been named in *The Hollywood Reporter’s* list of most powerful names in kids’ entertainment.

Tune in to CLEAN SLATE WITH BECKY MAGURA on Friday, May 15 at 8pm for an interview with Ms DeWitt to discuss her work with PBS KIDS.

SUMMER TRAINS AT CHEEKWOOD



AMERICA *the* BEAUTIFUL NATIONAL PARKS & LANDMARKS BY RAIL

May 2 - September 6

Model trains wind through 850 feet of track passing 25 destinations along the way. Set within the Bradford Robertson Color garden, the exhibition offers an experience for visitors of all ages. This installation is in addition to our permanent TRAINS! display which will also be running this summer. Tickets at cheekwood.org.



Funded in part by





- Audit & Advisory
- Tax Strategy & Compliance
- Outsourced Accounting & Analytics
- Forecasting & Budgeting Services
- Outsourced Human Resources
- Forensic Accounting & Litigation Support
- Managed IT & Cybersecurity
- Business Valuation

- Regional accounting, consulting, & information technology firm
- Providing business solutions for nearly 40 years
- Strong in integrity & customer service

Everything we do can be summarized in Crosslin's tagline "Do More. Be More.®" It highlights the commitment that the Crosslin team will do more, so our clients can in turn be more.

615.320.5500

www.crosslinpc.com



Bedspread, by Margaret Wood Dodge and John Wood Dodge, 1860, 2019.53.1



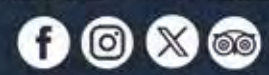
TENNESSEE VOICES, AMERICAN STORIES

Exhibition in 2026

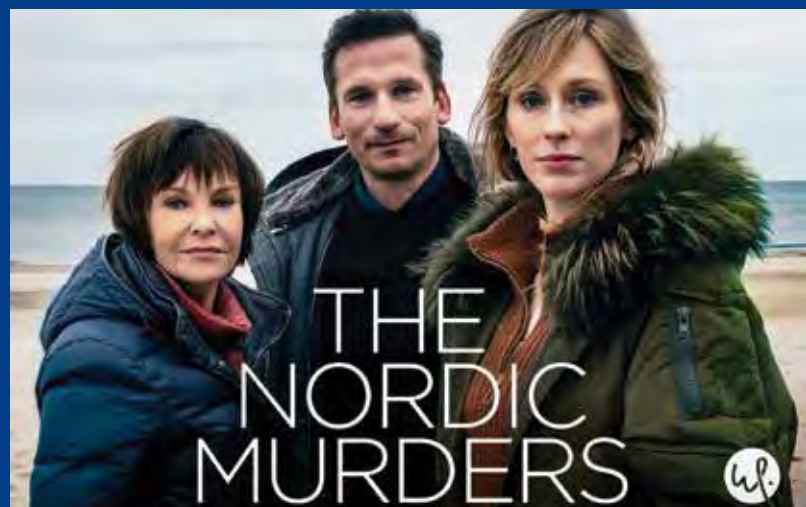


OPEN TO THE PUBLIC
1000 Rosa L. Parks Blvd.
Nashville, Tennessee

615.741.2692 • TNMuseum.org



DOWNLOAD THESE



HERE'S WHY...

Nashville PBS now offers two powerful ways to stream your favorite content, giving you flexibility in how you watch.

THE PBS APP

The PBS App features thousands of full-length videos and the ability to watch live TV from Nashville PBS. You can stream award-winning films and iconic series from PBS and Nashville PBS ANYTIME and ANYWHERE.

Activating the PBS App allows you to watch content on demand. Easily connect with programs from Nashville PBS, access your Watchlist, and sync all of your favorite local and national shows across your devices.

NASHVILLE PBS+ (New!)

Nashville PBS+ is a modern, all-in-one streaming experience created for our members. You'll find Nashville PBS+ re-imagined to be faster, smarter, and more personal than previous viewing options.

- Smarter navigation that finds your next favorite show fast!
- Curated collections featuring PBS classics with Nashville PBS Originals.
- Personalized recommendations that learn what you love.
- High-definition streaming on every device.

You can download the FREE PBS APP and Nashville PBS+ to your tablet, TV, smartphone, or any of your viewing devices.

Nashville  PBS



TWO GREAT APPS

PBS PASSPORT

With a Nashville PBS Annual \$60 Membership (only \$5/month), PBS Passport gives you extended access to a digital on-demand library of more than 1,500 episodes of PBS fan favorites. Plus new programs are being added regularly.

For example, you will have extended access to past fan favorites like GREAT PERFORMANCES, FINDING YOUR ROOTS and NOVA and AMERICAN MASTERS. You can also stream early releases of new series and binge-watch PBS favorites like MISS SCARLET, ALL CREATURES GREAT & SMALL, and BOOKISH. There's plenty of local stories too, like COUNTRY MUSIC: A NASHVILLE STORY, MUSIC ROW... and the list goes on and on.

AVAILABLE ON BOTH APPS

PBS Passport works seamlessly on both the PBS App and Nashville PBS+, giving you the flexibility to choose your preferred viewing experience.

PLATFORMS

Both apps are currently available to download on the following platforms: Android, iOS, Roku, Samsung Smart TV (Tizen), Apple TV, Android TV, Amazon Fire TV, Amazon Firestick, and Chromecast. Nashville PBS+ is also available on LG TVs.



PBS HIGHLIGHTS

Antenna Ch. 8.1; Charter Ch. 8; Comcast-Xfinity Ch. 8, 1008



Life On Earth: Attenborough's Greatest Adventure

Premiers May 6 at 7pm

In 1976, Sir David Attenborough embarked on an ambitious three-year global odyssey to film LIFE ON EARTH, an innovative documentary of unprecedented scale. Attenborough and his team traveled to 40 countries to document over 600 species and faced extraordinary challenges along the way, including a coup in the Comoros, gunshots in Rwanda, and threats from Saddam Hussein's army in Iraq. Written and presented by Attenborough, LIFE ON EARTH set out to "tell the greatest story in all the world": how life on our planet evolved.

Fifty years after production began, and in celebration of Attenborough's 100th birthday, the film offers rare, behind-the-scenes insight into the making of the groundbreaking series. Featuring exclusive interviews with Attenborough and his original crew, the special captures the triumphs and setbacks of filming the series during a pivotal era in television history, when jet travel and color filming were relatively new.

LIFE ON EARTH became the first worldwide natural history blockbuster, mesmerizing viewers with incredible photography and transforming public perception of the natural world. The documentary details how the team captured some of the series' most astounding moments — a lioness ferociously taking down a wildebeest, the rare moment a male Darwin's frog "gives birth" by mouth, and Attenborough's unforgettable encounter with mountain gorillas in Rwanda, often voted one of the greatest television moments of all time.



Great Performances

Fridays, May 1 – 22 at 8:30pm

From classical music and opera to ballet and musical theater, cameras capture the stage performances of some of the best artists in the world.

May 1 – Now Hear This: The Iceland Sound
Iceland produces some of the best musicians in the world. To find out how, Scott Yoo crosses this sunlit, rainy, volcanic land of extremes to meet composers Anna Thorvaldsdottir and Daniel Bjarnason, popular musician JFDR, instrument makers, music historians, and one of Iceland's most famous chefs.

May 8 – Suffs
The Tony-winning Broadway musical tells the story of the American suffragist movement and the remarkable friendships, heartbreak, and action that brought women together—or, in some cases, tore them apart.

May 15 – Top Hat
The show is inspired by the iconic 1935 movie musical starring Fred Astaire and Ginger Rogers. When Broadway star Jerry Travers arrives in London to open a new show, he crosses paths with a model, Dale Tremont, whose beauty sleep is interrupted by Jerry tap dancing in the hotel suite above hers. Instantly smitten, Jerry vows to abandon his bachelor life to win her, but the path of true love is never easy. With a timeless score by Irving Berlin, the musical features classics such as *Cheek to Cheek*, *Let's Face the Music and Dance*, and *Puttin' on the Ritz*.

May 8 – An Evening with Nicole Scherzinger
Accompanied by a full orchestra at the Royal Albert Hall in London, Scherzinger sings a mix of beloved Broadway standards and pop hits from her career as lead singer of "The Pussycat Dolls."



PBS America 250

In 2026, Nashville PBS is showcasing a programs reflecting the spirit of America, and telling you stories from America's history. Here are a few highlights for May and June.

May 19 at 8pm – American Masters: W.E.B. DuBois: Rebel with a Cause

This film examines the life of the brilliant W.E.B. Du Bois, who relentlessly spearheaded the fight for racial justice. In his life, he realized monumental achievements, including, co-founding the NAACP, helping to launch the Niagara Movement, and contributing to the founding of the United Nations.

May 24 at 7pm, Encore at 8:30pm – National Memorial Day Concert

Hosted by Gary Sinise and Esai Morales, this televised event honors U.S. service members, veterans, and military families with musical performances and tributes.

June 16 at 8pm – Becoming Katherine Graham

The story of a painfully shy woman's accidental rise to power and how it changed American history. As Nixon's nemesis during Watergate, she fought for truth, broke down barriers in a sexist world, inspiring generations with her courage and resilience.

June 29 at 7pm – Antiques Roadshow 250

This special episode features items from 1775 through today, reflecting 250 years of American art, artifacts, crafts and collectibles. Finds include a flag quilt, ca. 1880, and a Tiffany Studios turtle back glass shade.

June 29 at 9pm – Declarations: Black Americans and the Revolutionary War

Exploring the Revolutionary War through the experiences of free and enslaved Black people who believed, and fought for the tenets of democracy, and for themselves, their families, and their community.

PBS HIGHLIGHTS

Antenna Ch. 8.1; Charter Ch. 8; Comcast-Xfinity Ch. 8, 1008



Patience, Season 2

Sundays, June 14 - Aug 2 at 7pm

PATIENCE follows Patience Evans, a neuro-divergent woman who works in the Criminal Records Office in the city of York. Patience is autistic and views the world in a unique way. When Detective Inspector Bea Metcalf recognizes her talents, she takes Patience under her wing to assist with complex criminal investigations.

June 14 – The Vampire

A famous photographer is found dead with a stake through his heart and his body drained of blood.

June 21 – Music in the Minster

A music student is found dead in the rehearsal room. Then her professor dies too.

June 28 – The Magpie

A lawyer is shot dead in a packed boardroom, but no one saw the killer. A dead magpie at the scene leads into a magical tangle of lies.

July 5 – The Timetable

A young, autistic girl has witnessed her father's murder. Her mother has disappeared, but she's unable to tell anyone what happened.

July 12 – The Runes

When a Viking expert drops dead just before a big speech, Patience finds a message that hints at foul play. Then his colleague dies too.

July 19 – Paco's Revenge

A woman is found dead under a poisonous tree in the botanical gardens, with her face strangely burned.

July 26 – A Monk's Tale

When a monk is found dead in a chapel, unholy secrets surface at the monastery.

Aug 2 – Hostage

Patience and Frankie are held at gunpoint by an escaped prisoner, and as armed police prepare to storm the building, a figure from Frankie's past resurfaces.



Grantchester, Season 11

Sundays, June 14 - Aug 2 at 8pm

Set in the summer of 1963, the final 11th season follows Alphy Kottaram and Geordie Keating facing major life crossroads, with themes of family, faith, and forgiveness.

June 14 – Episode 1

A drive-in fundraiser organized by Alphy turns deadly when a sponsor is murdered, leading to multiple confessions.

June 21 – Episode 2

A Cambridge quiz team member is found dead. Alphy's Bible is found at the crime scene.

June 28 – Episode 3

Reeling from his mother's departure, Alphy dives into a new case. Geordie considers a promotion that could break up their partnership.

July 5 – Episode 4

Alphy uncovers painful truths about his family while trying to reconcile with his mother.

July 12 – Episode 5

A murder investigation exposes corruption within the Church's inner circle.

July 19 – Episode 6

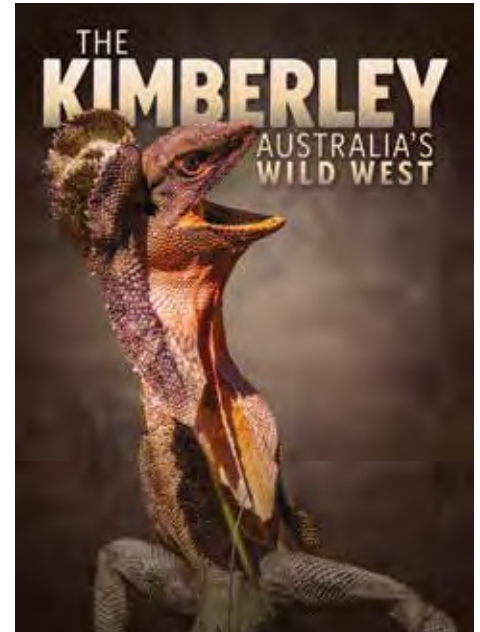
Following a death at CeCe's Fashion Boutique, Alphy is found drunk at an illegal poker game.

July 26 – Episode 7

Alphy seeks redemption as Geordie hunts for a local criminal's killer.

Aug 2 – Episode 8

In the series finale, Geordie fights for his life while a fugitive is on the run.



The Kimberley: Australia's Wild West (3 parts)

June 17 – July 1 at 9pm

A vast biodiversity wonderland and refuge for countless species, the Kimberley is a land that seems untouched by time. Experience a year in the lives of its remarkable wildlife, while traditional owners and ecologists work to protect this extraordinary region.

June 17 – The Kimberley Comes Alive

The Kimberley region in North West Australia boasts some of the most spectacular wilderness, and tough characters, in existence. We meet the humans, and the creatures, who – as the wet season comes to an end – begin their adventures across this diverse and surprising landscape.

June 24 – The Dry Season

It might be the dry season, but there's no rest in the outback: There are turtle eggs to be laid, saltwater crocodiles to dodge and young birds on maiden flights. Cattle must be mustered from the far corners of vast cattle properties and, when that is done, rodeos slam into action.

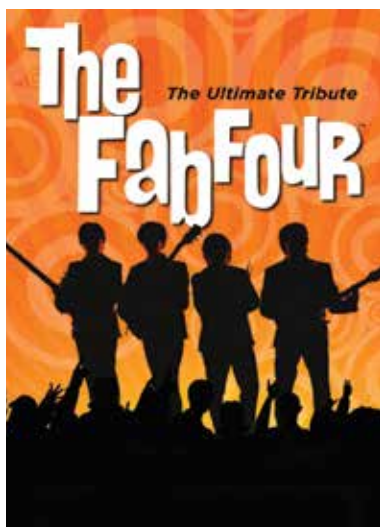
July 1 – Return of the Wet

Inland Kimberley is now so stiflingly hot, everything and everyone moves with caution – with the exception of gold diggers Honest John and Steve. The region's remaining waterholes are packed with animals, forced dangerously close. The coast is also a place to congregate. The humidity builds and finally, the skies explode with thunder and rain.

MEMBERSHIP SPECIAL HIGHLIGHTS

NASHVILLE PBS is grateful for your support! Your sustaining donations are vital in helping us continue to serve Nashville and Middle Tennessee!

Antenna Ch. 8.1; Charter Ch. 8; Comcast-Xfinity Ch. 8, 1008



The Fab Four | The Ultimate Tribute

May 30 at 6:30pm; May 31 at 11pm; June 4 at 10pm; June 5 at 3pm

With uncanny, note-for-note live renditions of the Beatles' classics, the "Fab Four" will make you think you are back in time rockin' with John, Paul, George and Ringo! With The "Fab Four" on stage, you'll hear record-perfect live performances of such classics as *Can't Buy Me Love*, *Yesterday*, *A Day In The Life*, *Penny Lane*, *Here Comes The Sun*, *Hey Jude* and many more!

Barry Manilow | Live by Request

May 30 at 6:30pm; June 5 at 8pm; June 6 at 1am; June 7 at 3pm

Originally broadcast live throughout the U.S. in December 1996, the show features the beloved singer/songwriter in top form as some of his most ardent fans call in to request their favorite songs and chat with the star in real time. Among the Manilow classics performed are *Somewhere In the Night*, *Mandy*, *Copacabana*, *Daybreak*, and *I Write the Songs*.



Great Performances | Josh Groban | An Intimate Evening at the Union Chapel

May 31 at 12:30am; June 1 at 8pm; June 2 at 1am; June 4 at 4pm

Spend a spellbinding evening with one of the world's most captivating voices as Josh Groban takes the stage in the breathtaking setting of London's historic Union Chapel. Blending soaring vocals with heartfelt storytelling, Groban delivers a deeply personal performance.



Country Classics

June 4 at 7pm; June 6 at 7pm; June 7 at 8pm;

Celebrate the timeless legacy of country music with today's stars honoring the genre's most iconic legends. Featuring powerful performances of classic hits, the program is a heartfelt tribute to the voices that shaped country music. Sing along to performances of classic hits by trailblazers including Willie Nelson, Johnny Cash, Kris Kristofferson, Waylon Jennings, Kenny Rogers and Dolly Parton.



Lucy Worsley Investigates | The American Revolution |

Part 1, The Break-Up | Part 2, A Messy Divorce

May 31 at 6:30pm; June 1 at 12:30am; June 3 at 3pm

Over two episodes, Lucy delves deeper into the American Revolution by examining it from the British perspective, discovering the human drama, radical ideas, and political missteps behind this seismic split, and revealing how losing America changed Britain forever.

Barbra Streisand | Timeless

June 1 at 10pm; June 2 at 3am; June 7 at 1am

A highly autobiographical concert and "life retrospective" featuring a journey through her career, including Broadway hits, film standards, and personal sketches.





CREATE SHOW MARATHONS



Antenna Ch. 8.4; Charter Ch. 190, 192, 193; Comcast-Xfinity Ch. 256, 1161

The Create Marathons run Friday 8 – 1pm, Saturday 7am – 12pm, Sunday 11am – 4pm, and weeknights 8 – 9pm & 1am – 2am



FIESTA WITH PATI
Starts Fri, May 1

Pati Jinich leads us through the fascinating and often misunderstood U.S.–Mexico border region to showcase the rich culture, people, and cuisines of these dynamic communities.



HAPPY TRAVELS, RICK!
Starts Fri, May 8

It's Rick Steves' birthday, and he's taking us to some of his favorite places! Get ready for a tour of fabulous European destinations that are sure to inspire some travel dreams for your next adventure.



**CREATING IN COMMUNITY:
ASIAN PACIFIC
AMERICAN CULTURE**
Starts Fri, May 15

You're invited on an Irish adventure with Michael Londra. Get swept away by the striking landscapes, experience the magic of the history and traditions, and prepare to be dazzled by talented performers from all corners of the Emerald Isle.



**NATIONAL
BARBECUE MONTH
(Viewers' Choice)**
Starts Fri, May 22

The smoke, the sizzle, the rich flavor... there is so much to love about barbecue! Enjoy a feast of grilled perfection that spans many cuisines.



WEEKEND PROJECTS
Starts Fri, May 29

Join Create for a weekend of tips and tricks to crack your to-do list, ranging from home fixes and furniture repairs to projects that hone your handiwork skills.



Antenna Ch. 8.2; Charter Ch. 176; Comcast-Xfinity Ch. 241



THE STORY OF CHINA
with Michael Wood

THE STORY OF CHINA WITH MICHAEL WOOD

Travel from the Silk Road to the Yellow Sea with host Michael Wood as he explores the history of the world's newest superpower. A thrilling and moving epic of the world's oldest continuous state with the landscapes, peoples, and stories that made China.

Tues, May 12 at 2pm

Ancestors – The beginnings of Chinese history provide clues to today's China.
Silk Roads and China Ships – China's first great international age, the Tang Dynasty.

Wed, May 13 at 2pm

Golden Age – The tale of China's Resistance.
The Ming – The time of the Great Wall, the Forbidden City and treasure ships sent on ocean voyages.

Thurs, May 14 at 2pm

The Last Empire – The dramatic tale of China's last empire, the Qing.
The Age of Revolution – The great Taiping Rebellion, the fall of the Empire and the rise of Mao.



PBS KIDS CHANNEL

Over the Air - 8.3; Comcast - 242;
Charter - 189 or 192; Google Fiber - 87

[Download the PBS KIDS app!](#)



WOWSABOUT!

Premiering May 1

The Jim Henson Company's newest PBS KIDS' show is a family-friendly adventure set in Sequoia National Park. The half-hour special, features live-action puppets shot on location. Roxy, an artistic and musical hedgehog, and Ronald, a fastidious, city-raised pig, explore the emotion of awe on their first camping trip together.

AMERICA'S AWESOME KIDS

Premiering May 22

The series showcases kids in a series of 25 live-action shorts from coast-to-coast, revealing what is special about where they live, their hobbies and passions, and how they are making a positive impact in their communities.



CITY ISLAND:USA

Premiering June 12

PBS KIDS brings young viewers on an unforgettable cross-country adventure with this dynamic new miniseries of six 2-minute shorts. Blending animation with real live-action locations across the country, the series follows Watt, the little lightbulb with big ideas, and his breezy best friend, Windy the kite, as they soar from City Island into real-life America.

XAVIER RIDDLE CELEBRATES AMERICAN HEROES

Premiering June 12

Xavier celebrates "ordinary" American kids throughout history who went on to do extraordinary things in a series of four hour-long specials.



- 6:00am Pinkalicious & Peterrific
- 6:30am Curious George
- 7:00am Sesame Street
- 7:30am Phoebe & Jay
- 8:00am Work It Out Wombats!
- 8:30am Work it Out Wombats!
- 9:00am Daniel Tiger's Neighborhood
- 9:30am Daniel Tiger's Neighborhood
- 10:00am Carl the Collector
- 10:30am Carl the Collector
- 11:00am Donkey Hodie
- 11:30am Donkey Hodie
- 12:00pm Elinor Wonders Why
- 12:30pm Rosie's Rules
- 1:00pm Phoebe & Jay
- 1:30pm Xavier Riddle and the Secret Museum
- 2:00pm Molly of Denali
- 2:30pm Alma's Way
- 3:00pm Lyla in the Loop
- 3:30pm Weather Hunters
- 4:00pm Odd Squad
- 4:30pm Wild Kratts
- 5:00pm Wild Kratts
- 5:30pm Weather Hunters
- 6:00pm Lyla in the Loop
- 6:30pm Arthur
- 7:00pm Nature Cat
- 7:30pm Hero Elementary
- 8:00pm Cyberchase
- 8:30pm Let's Go Luna!
- 9:00pm Phoebe & Jay
- 9:30pm Xavier Riddle and the Secret Museum

MORE THAN A STAGE

The story of how Martha Rivers Ingram sparked Nashville's arts and theater renaissance with the creation of TPAC.

Premiering Mon, June 29 at 8pm



SUNDAY AFTERNOON, APRIL 5, 1922

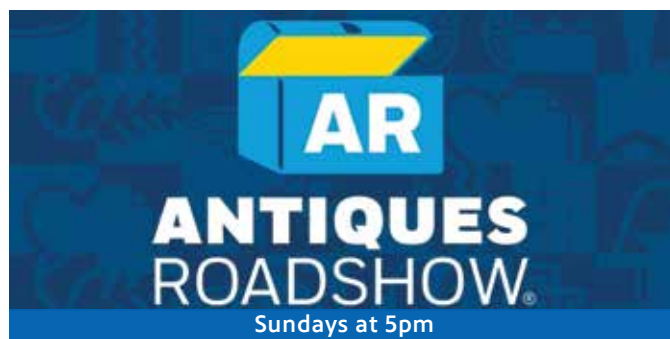
There are three rare American cities where someone will sell everything they own and move there with nothing but a dream: New York, Los Angeles, and Nashville. MORE THAN A STAGE will tell the story of a scrappy, Nashville underdog who fights against the establishment on the way to success. Focusing on the creation of the Tennessee Performing Arts Center, this documentary will tell the story of how Nashvillian Martha Ingram helped spark an arts movement, which included the Nashville Symphony, Opera, Ballet, and Repertory Theatre.

The most well-known venue in downtown Nashville was the Ryman Auditorium, but in 1974 the auditorium lost its famous tenant, the Grand Ole Opry, and the building would go dark for 20 years. The closure of the auditorium further fragmented the local arts community. During this time, the Tennessee Performing Arts Foundation was founded, and Martha Rivers Ingram bucked local and national trends by campaigning to create a new theatre in a downtown area during a recession. The Charleston born Ingram faced numerous hurdles: the Southern Old Boy Network, a weak economy, upheaval in the Governor's office (the Tennessee Governor went to jail), a dilapidated downtown, and a lack of arts organizations.

Martha brought together a group of determined southern women to work on the ambitious project. The women partnered with the State of Tennessee, the Governor, and Legislature to launch a collaboration to build a performance hall and state office space, which had never been done before in the United States. The project was built in the '70s during an economic downturn in the country yet these women focused on the statewide effort to raise the money for this much needed building, featuring three separate theatres. Not since the historic ratification of the 19th Amendment in Tennessee, giving 27 million women the right to vote, had a group of determined women fought the southern establishment to lobby the Tennessee Legislature for a huge victory no one thought was possible.

The documentary will also highlight the over 200-year history of theatre and the creative community in Nashville and how it shaped the city which is now known as one of the most creative cities in the United States. The documentary will include four sections: the early 19th Century to the Civil War, the period after the Civil War until 1924, 1925-1980, and lastly 1980 to the present.

DAYTIME SCHEDULE



Weekday Schedule

- | | |
|----------------------------------|---------------------------|
| 5:00 Classical Stretch | 12:00 Donkey Hodie |
| 5:30 Yoga in Practice | 12:30 Phoebe & Jay |
| 6:00 Wild Kratts | 1:00 Elinor Wonders Why |
| 6:30 Weather Hunters | 1:30 Work It Out Wombats! |
| 7:00 Lyla in the Loop | 2:00 Odd Squad |
| 7:30 Carl The Collector | 2:30 Arthur |
| 8:00 Daniel Tiger's Neighborhood | 3:00 Cooking Shows |
| 8:30 Molly of Denali | 3:30 Travel Shows |
| 9:00 At-Home Learning | 4:00 NPT Favorites |
| 11:00 Sesame Street | 5:00 NPT Favorites |
| 11:30 Rosie's Rules | 6:00 PBS NewsHour |

Saturdays

- | | |
|--|--|
| 5:00 Mr. Rogers' Neighborhood | 12:00 America's Test Kitchen |
| 5:30 Arthur | 12:30 Cook's Country |
| 6:00 Wild Kratts | 1:00 Pati's Mexican Table |
| 6:30 Weather Hunters | 1:30 Farmer and the Foodie |
| 7:00 Lyla in the Loop | 2:00 Wild Foods |
| 7:30 Carl The Collector | 2:30 Fit 2 Stitch |
| 8:00 Daniel Tiger's Neighborhood | 3:00 Best of Joy of Painting |
| 8:30 Phoebe & Jay | 3:30 Volunteer Woodworker |
| 9:00 Best of Sewing with Nancy | 4:00 Woodsmith Shop |
| 9:30 Quilting Arts | 4:30 This Old House |
| 10:00 Garden Smart | 5:00 Ask This Old House |
| 10:30 Tim Farmer's Country Kitchen | 5:30 Wild Side |
| 11:00 Lidia's Kitchen | 6:00 Horizons from PBS News |
| 11:30 Christopher Kimball's Milk Street Television | 6:30 Papa Ray's Vintage Vinyl Roadshow |

Sundays

- | | |
|----------------------------------|---|
| 5:00 Mr. Rogers' Neighborhood | 10:30 Nature |
| 5:30 Arthur | 11:30 Washington Week |
| 6:00 Wild Kratts | 12:00 To the Contrary |
| 6:30 Weather Hunters | 12:30 Firing Line |
| 7:00 Skillville | 1:00 Masterpiece/NPT Favorites |
| 7:30 Carl The Collector | 3:00 Samantha Brown's Places to Love |
| 8:00 Daniel Tiger's Neighborhood | 3:30 Rick Steves' Europe |
| 8:30 Phoebe & Jay | 4:30 American Muslims: A History Revealed |
| 9:00 Wild Side | 5:00 Antiques Roadshow |
| 9:30 Volunteer Gardener | 6:00 Compass Points from PBS News |
| 10:00 Tennessee Crossroads | 6:30 NPT Originals |

Our weekend schedule may occasionally include special programs as part of our Membership Campaign; please check our online schedule at wnpt.org/schedule for the latest information, or scan the barcode.



MAY Primetime

*subject to change

DATES	7:00pm	7:30pm	8:00pm	8:30pm	9:00pm
1 FRI	Washington Week with the Atlantic	Firing Line with Margaret Hoover	Retro Tennessee Crossroads	Great Performances Now Hear This: The Iceland Sound	
2 SAT	Lawrence Welk Show: America at Play		Keeping Up Appearances: Early Retirement	As Time Goes By: Future Imperfect	As Time Goes By: Going Online
3 SUN	Call the Midwife Season 15 - Part VII		The Manners of Downton Abbey: A Masterpiece Special		The Count of Monte Cristo: The Deal
4 MON	Antiques Roadshow: Grants Farm, Hour 2		<i>*The American Revolution: The Soul of All America*</i>		
5 TUE	Finding Your Roots Season 10: In the Blood		<i>*The American Revolution: The Most Sacred Thing*</i>		
6 WED	Life on Earth: Attenborough's Greatest Adventure		NOVA Decoding the Universe: Cosmos		Shared Planet: Open Spaces
7 THU	Tennessee Crossroads	Volunteer Gardener	Tennessee Crossroads	Food Roots	
8 FRI	Washington Week with the Atlantic	Firing Line with Margaret Hoover	Clean Slate with Becky Magura	Great Performances: Suffs	
9 SAT	Lawrence Welk Show: Caribbean Cruise		Keeping Up Appearances: Iron Age Remains	As Time Goes By: You Can't Manufacture...	As Time Goes By: Another Proposal
10 SUN	Call the Midwife Season 15 - Series Finale		More Manners of Downton Abbey: A Masterpiece Special		The Count of Monte Cristo: The Last Two - Finale
11 MON	Antiques Roadshow: Grants Farm, Hour 3		Antiques Roadshow: Santa Fe's Museum Hill, Hour 3		Reel South Season 11: Night In West Texas
12 TUE	Finding Your Roots Season 9: Far from Home		Finding Your Roots Season 11: Larger Than Life		FRONTLINE: The President vs. The Fed
13 WED	Nature: Attenborough and the Sea Dragon		NOVA Decoding the Universe: Quantum		Shared Planet: Forests
14 THU	Tennessee Crossroads	Volunteer Gardener	Tennessee Crossroads	For The Love of Excellence: 40 Years of the Midsouth Emmy Awards	
15 FRI	Washington Week with the Atlantic	Firing Line with Margaret Hoover	The Citizenship Project: Cumberland Homesteads	Great Performances: Top Hat	
16 SAT	Lawrence Welk Show: Tribute to Irving Berlin		Keeping Up Appearances: Violet's Country Cottage	As Time Goes By: The Wedding	As Time Goes By: What Now?
17 SUN	The Great Escaper on Masterpiece				Downton Abbey Season 1 - Part I
18 MON	Antiques Roadshow: Junk in the Trunk 15		Antiques Roadshow: Cheekwood Estate & Gardens, Hour 1		Reel South Season 11: Louder Than Guns
19 TUE	Finding Your Roots Season 11: Stranger Than Fiction		American Masters W.E.B. Du Bois: Rebel with a Cause		
20 WED	Nature: Attenborough's Wonder of Song		NOVA: When Whales Could Walk		Shared Planet: Waters
21 THU	Tennessee Crossroads	Volunteer Gardener	A Slice of the Community	Nashville: The 20th Century in Photographs, Vol. 1 & 2	
22 FRI	Washington Week with the Atlantic	Firing Line with Margaret Hoover	A Slice of the Community	Great Performances: An Evening with Nicole Scherzinger	
23 SAT	Lawrence Welk Show: Grammy Award Songs		Keeping Up Appearances	As Time Goes By: You Must Remember This, Pt. I	As Time Goes By: You Must Remember This, Pt. II
24 SUN	National Memorial Day Concert 2026 - Premiere			National Memorial Day Concert 2026 - Encore	
25 MON	Antiques Roadshow: Celebrating Asian-Pacific Heritage		Antiques Roadshow: Cheekwood Estate & Gardens, Hour 2		Reel South Season 11: Drowned Land
26 TUE	Finding Your Roots Season 11: Dreamers One and All		Seabiscuit: American Experience		FRONTLINE: The War Cabinet
27 WED	Nature: Attenborough and the Jurassic Sea Monster		NOVA: Great Mammoth Mystery		Secrets of the Dead: China's Bronze Kingdom
28 THU	Tennessee Crossroads	Volunteer Gardener	Tennessee Crossroads	Nashville: The 20th Century in Photographs, Vol. 3 & 4	
29 FRI	<i>*Washington Week with the Atlantic*</i>	Firing Line with Margaret Hoover	A Slice of the Community	Great Performances Broadway Musicals: A Jewish Legacy	
30 SAT	<i>*The Fab Four: The Ultimate Beatles Tribute* (cont.)</i>		<i>*Barry Manilow: Live By Request*</i>		
31 SUN	<i>*Lucy Worsley Investigates: The American Revolution - The Break Up/A Messy Divorce* (cont.)</i>				<i>*Downton Abbey Season 1 - Part III*</i>



*subject to change

DATES	9:30pm	10:00pm	10:30pm	11:00pm	11:30pm
1 FRI	Great Performances Now Hear This: The Composer is Yoo		History with David Rubenstein	BBC News	Tennessee Wild Side
2 SAT	Rufus Wainwright Does Kurt Weill		Stand Together As One		Austin City Limits: Pat Benatar & Neil Giraldo
3 SUN	The Count of Monte Cristo (cont.)	Astrid Season 4: Eye of the Dragon - Premiere		Murder in the Mountains: Rubbish Diver	
4 MON	<i>*The American Revolution: The Soul of All America* (cont.)</i>		Roadtrip Nation: Where Wellbeing Grows - Pt. I	BBC News	Next Door Neighbors: Hablamos Espanol
5 TUE	<i>*The American Revolution: The Most Sacred Thing* (cont.)</i>			Roadtrip Nation: Where Wellbeing Grows - Pt. II	BBC News
6 WED	Shared Planet (cont.)	Human Footprint: Top Predator		BBC News	Volunteer Gardener
7 THU	Grandma Stand		Finding Your Roots Season 10: In the Blood		BBC News
8 FRI	Great Performances: Suff's (cont.)			BBC News	Tennessee Wild Side
9 SAT	Recorded Live at Analog: Michael McDonald and Paul Reiser		Recorded Live at Analog: The War & Treaty		Austin City Limits: Gary Clark Jr./Black Pumas
10 SUN	The Count of Monte Cristo (cont.)	Astrid Season 4: The Arabian Nights		Murder in the Mountains: Firestarter	
11 MON	Reel South Season 11 (cont.)	Independent Lens: Natchez			BBC News
12 TUE	FRONTLINE (cont.)	PBS Program (TBA)		BBC News	Tennessee Crossroads
13 WED	Shared Planet (cont.)	Human Footprint: Man's Best Friend		BBC News	Volunteer Gardener
14 THU	The Ryman: Mother Church of Country Music		Finding Your Roots Season 9: Far from Home		BBC News
15 FRI	Great Performances: Top Hat (cont.)			BBC News	Tennessee Wild Side
16 SAT	Recorded Live at Analog: Madison Ryann Ward		Recorded Live at Analog: Sierra Ferrell		Austin City Limits: Jelly Roll/The War & Treaty
17 SUN	Downton Abbey Season 1 - Part I (cont.)		Astrid Season 4: 30,000 Feet		Murder in the Mountains: Rotten Eggs
18 MON	Reel South Season 11 (cont.)	Independent Lens: Light of the Setting Sun			BBC News
19 TUE	American Masters (cont.)	Facing North: Jefferson Street, Nashville		BBC News	Tennessee Crossroads
20 WED	Shared Planet (cont.)	Human Footprint: The Replacements		BBC News	Volunteer Gardener
21 THU	Nashville (cont.)	Finding Your Roots Season 11: Stranger Than Fiction		BBC News	Next Door Neighbors: Suda- nese
22 FRI	Great Performances (cont.)	Great Performances Now Hear This: Rising Stars		BBC News	Tennessee Wild Side
23 SAT	Recorded Live at Analog: Jeff 'Skunk' Baxter and Friends		Recorded Live at Analog: Koe Wetzell		Austin City Limits: Chris Stapleton
24 SUN	National Memorial Day Concert 2026 (cont.)	Downton Abbey Season 1 - Part II		Murder in the Mountains: Break It Up	
25 MON	Reel South Season 11 (cont.)	Independent Lens: Third Act			BBC News
26 TUE	FRONTLINE (cont.)	PBS Program (TBA)		BBC News	Tennessee Crossroads
27 WED	Secrets of the Dead (cont.)	Human Footprint: The Urban Jungle		BBC News	Volunteer Gardener
28 THU	Nashville (cont.)	Finding Your Roots Season 11: Dreamers One and All		BBC News	Aging Matters: Second Acts
29 FRI	Great Performances Broadway Musicals: A Jewish Legacy (cont.)		History with David Rubenstein	BBC News	Tennessee Wild Side
30 SAT	<i>*60s and 70s Soul Celebration*</i>				
31 SUN	<i>*Downton Abbey Season 1 - Part III* (cont.)</i>			<i>*The Fab Four: The Ultimate Beatles Tribute*</i>	
	9:30pm	10:00pm	10:30pm	11:00pm	11:30pm

JUNE Primetime

*subject to change

DATES	7:00pm	7:30pm	8:00pm	8:30pm	9:00pm
1 MON	Antiques Roadshow: Cheekwood Estate & Gardens, Hour 3		<i>*Great Performances Josh Groban: An Evening at Union Chapel*</i>		
2 TUE	<i>*Women of World War II: More Untold Stories*</i>			<i>*The Making of the American Revolution*</i>	
3 WED	<i>*Nature Equus: Story of the Horse: Origins*</i>			<i>*Memory Makeover with Daniel Amen, MD*</i>	
4 THU	<i>*Country Classics*</i>			<i>*Mister Rogers: It's You I Like*</i>	
5 FRI	<i>*Washington Week with the Atlantic*</i>	Firing Line with Margaret Hoover	<i>*Barry Manilow: Live By Request*</i>		
6 SAT	<i>*Mister Rogers: It's You I Like* (cont.)</i>		<i>*Country Classics*</i>		
7 SUN	<i>*Barry Bostwick Presents Classical Rewind* (cont.)</i>		<i>*Our Favorite Things About Grantchester*</i>		
8 MON	Antiques Roadshow: Never Seen That Before!		Antiques Roadshow: Kids Stuff	Reel South Season 11: Discount Funeral	
9 TUE	Finding Your Roots Season 12: American Dreams		Woodstock Three Days That Defined a Generation: American Experience		
10 WED	Nature: Museum Alive with David Attenborough		NOVA: Alaskan Dinosaurs	Secrets of the Dead: Ben Franklin's Bones	
11 THU	Tennessee Crossroads	Volunteer Gardener	Tennessee Crossroads	The Citizenship Project By One Vote: Woman Suffrage in the South	
12 FRI	Washington Week with the Atlantic Special		Local Program (TBA)	American Masters Janis Ian: Breaking Silence	
13 SAT	Lawrence Welk Show: Transportation		Keeping Up Appearances: Richard's Newhobby	As Time Goes By: You Must Remember This	As Time Goes By: Getting to Know You - Again
14 SUN	Patience Season 2: Vampire - Premiere		Grantchester Season 11 - Premiere		Downton Abbey Season 2 - Part I
15 MON	Antiques Roadshow: Crystal Bridges Museum of American Art, Hour 1		Antiques Roadshow: Crystal Bridges Museum of American Art, Hour 2		Reel South Season 11: Jan Beauboeuf/Police Dive
16 TUE	Finding Your Roots Season 12: Great Migrations		Becoming Katharine Graham		
17 WED	Nature: Wildheart		NOVA: Secrets of the Forest		The Kimberley: Australia's Wild West - Pt. I
18 THU	Tennessee Crossroads	Volunteer Gardener	Aging Matters: Vision for the Future	A Slice of the Community	Aging Matters: Aging with Pride
19 FRI	Washington Week with the Atlantic	Firing Line with Margaret Hoover	Local Program (TBA)	George H.W. Bush: American Experience - Part I	
20 SAT	Lawrence Welk Show: Harry Warren Salute		Keeping Up Appearances: The Art Exhibition	As Time Goes By: The Copper Kettle	As Time Goes By: Surprise, Surprise
21 SUN	Patience Season 2: Music in the Minster		Grantchester Season 11 - Part II		Downton Abbey Season 2 - Part II
22 MON	Antiques Roadshow: Crystal Bridges Museum of American Art, Hour 3		Antiques Roadshow: Springs Preserve, Hour 1		Reel South Season 11: Boil That Cabbage Down
23 TUE	Finding Your Roots Season 12: The Ties That Bind		Lucy Worsley Investigates The American Revolution: The Break Up		FRONTLINE (TBA)
24 WED	Nature: American Horses		NOVA: Ancient Desert Death Trap		The Kimberley: Australia's Wild West - Pt. II
25 THU	Tennessee Crossroads	Volunteer Gardener	Next Door Neighbors: Global Flavors...	Next Door Neighbors: Flavors Without Borders	Next Door Neighbors: Born in the USA
26 FRI	Firing Line with Margaret Hoover Special		Local Program (TBA)	George H.W. Bush: American Experience - Conclusion	
27 SAT	Lawrence Welk Show: Songs by Johnny Mercer		Keeping Up Appearances	As Time Goes By: Relationships	As Time Goes By: The Picnic
28 SUN	Patience Season 2: The Magpie		Grantchester Season 11 - Part III		Downton Abbey Season 2 - Part III
29 MON	Antiques Roadshow: 250 Years of Americana		More Than a Stage		Declarations
30 TUE	Finding Your Roots Season 9: Secret Lives		Lucy Worsley Investigates The American Revolution: A Messy Divorce		FRONTLINE (TBA)

*subject to change



DATES	9:30pm	10:00pm	10:30pm	11:00pm	11:30pm
1 MON	<i>*Great Performances* (cont.)</i>	<i>*Barbra Streisand: Timeless - Live in Concert*</i>			
2 TUE	<i>*The Making of the American Revolution* (cont.)</i>		<i>*Rick Steves Fascism in Europe*</i>		
3 WED	<i>*Memory Makeover with Daniel Amen, MD* (cont.)</i>		<i>*Supercharge Your Brain: Maximizing Your Cognitive Abilities*</i>		
4 THU	<i>*Mister Rogers* (cont.)</i>	<i>*The Fab Four: The Ultimate Beatles Tribute*</i>			<i>*60s and 70s Soul Celebration*</i>
5 FRI	<i>*Woody Guthrie at 100! Live at the Kennedy Center*</i>			<i>*Billy Joel The 100th: Live at Madison Square Garden*</i>	
6 SAT	<i>*Country Classics*</i>			<i>*60s Pop, Rock & Soul*</i>	
7 SUN	<i>*Downton Abbey Season 1 - Finale*</i>				<i>*Memory Makeover with Daniel Amen*</i>
8 MON	Reel South Season 11 (cont.)	Prideland		BBC News	Local Program (TBA)
9 TUE	Woodstock (cont.)	Stonewall Uprising: American Experience			BBC News
10 WED	Secrets of the Dead (cont.)	Human Footprint: The Ground Below		BBC News	Volunteer Gardener
11 THU	The Citizenship Project: Cumberland Homesteads	Finding Your Roots Season 12: American Dreams		BBC News	Local Program (TBA)
12 FRI	American Masters Janis Ian: Breaking Silence (cont.)		History with David Rubenstein	BBC News	Tennessee Wild Side
13 SAT	Recorded Live at Analog Season 2: Dave Stewart Does Dylan		Recorded Live at Analog Season 2: Molly Tuttle & Ketch Secor		Austin City Limits: Kacey Musgraves
14 SUN	Downton Abbey Season 2 - Part I (cont.)			Astrid Season 4: Immortal	
15 MON	Reel South Season 11 (cont.)	The Last Twins			BBC News
16 TUE	Becoming Katharine Graham (cont.)	Stripped for Parts: American Journalism on the Brink			BBC News
17 WED	The Kimberley: Australia's Wild West (cont.)	Outback: The Kimberley Comes Alive		BBC News	Volunteer Gardener
18 THU	Aging Matters: Aging with Honor	Finding Your Roots Season 12: Great Migrations		BBC News	Local Program (TBA)
19 FRI	George H.W. Bush: American Experience - Part I (cont.)		History with David Rubenstein	BBC News	Tennessee Wild Side
20 SAT	Recorded Live at Analog Season 2: Chase Rice		Recorded Live at Analog Season 2: George Thorogood & The Destroyers		Austin City Limits: Kacey Musgraves
21 SUN	Downton Abbey Season 2 (cont.)	Astrid Season 4: Madman's Sacrifice		Murder in the Mountains: Old Wounds	
22 MON	Reel South Season 11 (cont.)	Independent Lens: Assembly		BBC News	Local Program (TBA)
23 TUE	FRONTLINE (cont.)	Wired for Connection		BBC News	Tennessee Crossroads
24 WED	The Kimberley: Australia's Wild West (cont.)	Outback: The Dry Season		BBC News	Volunteer Gardener
25 THU	Next Door Neighbors: Culture Shocks	Finding Your Roots Season 11: The Ties That Bind		BBC News	Local Program (TBA)
26 FRI	American Experience (cont.)	The American Revolution: An Inside Look	History with David Rubenstein	BBC News	Tennessee Wild Side
27 SAT	Recorded Live at Analog Season 2: Back Home Again: A Tribute to John Denver		Recorded Live at Analog Season 2: Deborah Silver		Austin City Limits: Juanes
28 SUN	Downton Abbey Season 2 (cont.)	Astrid Season 4: Time Traveler		Murder in the Mountains: In the Dungeon	
29 MON	Declarations (cont.)	The Citizenship Project: Soldier & Citizen		BBC News	Local Program (TBA)
30 TUE	FRONTLINE (cont.)	Listen to Me		BBC News	Tennessee Crossroads
	9:30pm	10:00pm	10:30pm	11:00pm	11:30pm



Nashville  PBS

PET CLUB

wnpt.org/petclub

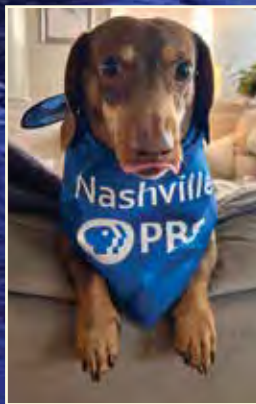


Poppy

You hear it at the end of every program: "Made possible by viewers like you." But what about your pets? Don't they deserve some recognition, too? Chances are good they're sitting right there next to you on the couch, eager to flaunt their local, Nashville PBS pride!

Well, now they can by joining our brand-new Pet Club! For a sustaining membership of \$15 a month, up to three of your furry or scaly or gilled or hooved friends can become official members of the station! All pets are happily accepted and included!

The best part is that we'll be broadcasting and sharing photos on our social media channels of your pets sporting nifty Nashville PBS regalia (a bandana). Plus, they'll be welcomed into the club with a personalized card and coupons for discounted treats and toys because they're all so very good.



Thank you to the Contributing Businesses:

- Hollywood Feed
- Crossroads Pet Resort
- Miss Kitty's Dog Resort
- Scoop 911



Catering for Breakfast, Lunch, AND Dinner!

ORDERS AVAILABLE ONLINE, OVER THE PHONE, OR BY EMAIL!

3656 TROUSDALE DRIVE UNIT 101 | NASHVILLE, TN | 615-873-1661 | NASHVILLE.APPLESPICE.COM | NASHVILLE@APPLESPICE.COM



Landmark Roofing



615-573-2555



landmarkroofingexperts.com

